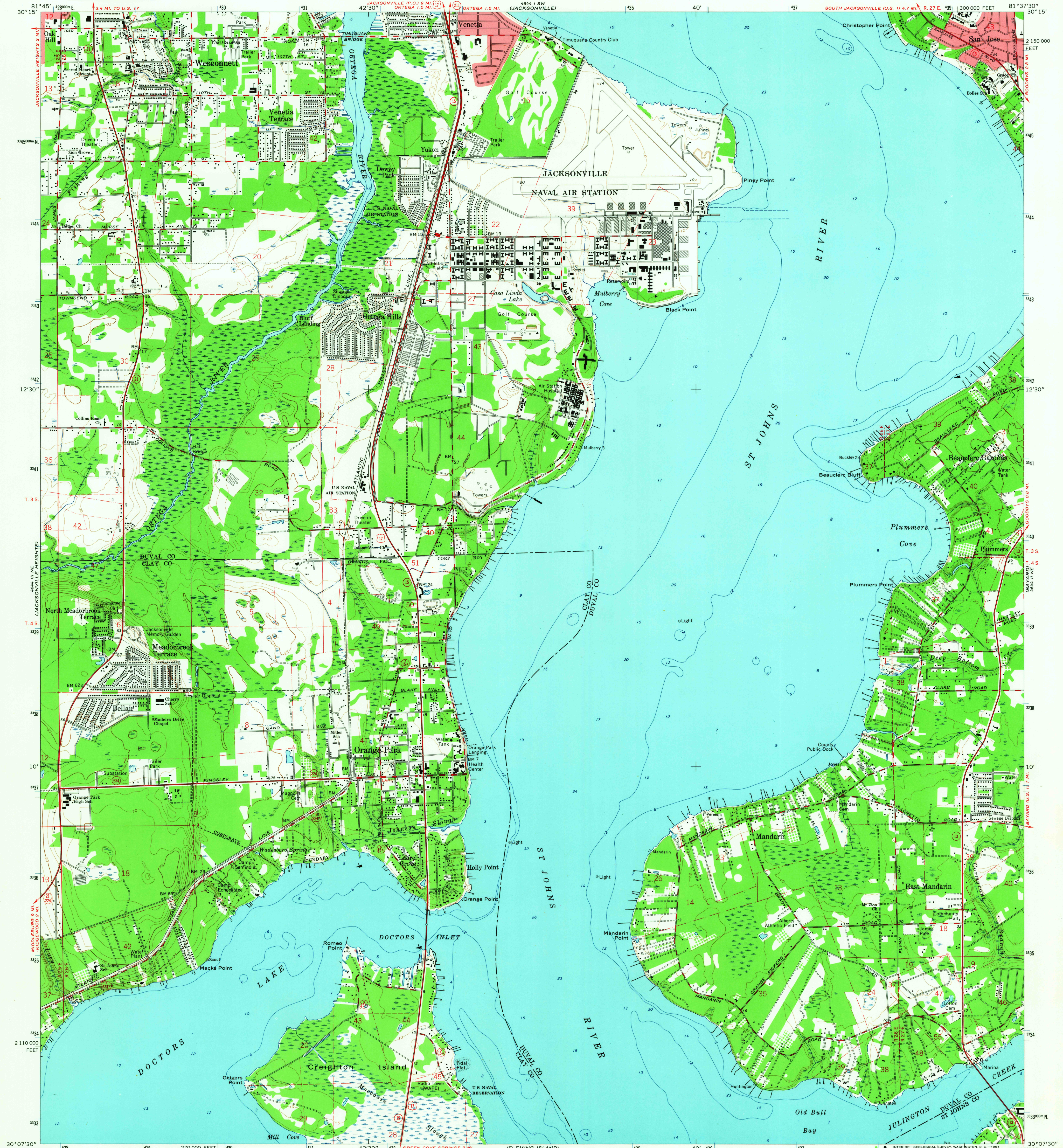
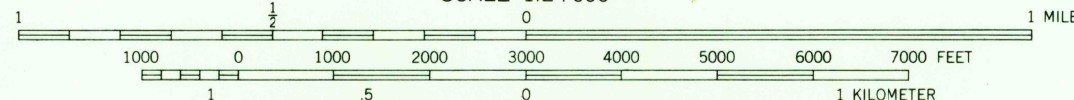
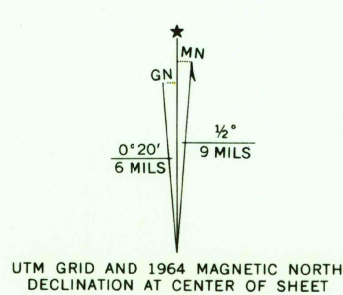


UNITED STATES
DEPARTMENT OF THE INTERIOR
GEOLOGICAL SURVEY

ORANGE PARK QUADRANGLE
FLORIDA
7.5 MINUTE SERIES (TOPOGRAPHIC)
NW/4 ORANGE PARK 15' QUADRANGLE



Mapped by the U.S. Coast and Geodetic Survey
Edited and published by the Geological Survey
Control by USGS, USC&GS, USCE, and Florida Geodetic Survey
Planimetry by photogrammetric methods from aerial photographs
taken 1949. Topography by planetable surveys 1951. Field checked 1952
Revised by the Geological Survey from aerial photographs taken 1963
Field checked 1964
Selected hydrographic data compiled from USC&GS Chart 685 (1963)
This information is not intended for navigational purposes
Polyconic projection. 1927 North American datum
10,000-foot grid based on Florida coordinate system, east zone
1000-meter Universal Transverse Mercator grid ticks,
zone 17, shown in blue
Fine red dashed lines indicate selected fence and field lines where
generally visible on aerial photographs. This information is unchecked
Red tint indicates areas in which only landmark buildings are shown



CONTOUR INTERVAL 5 FEET
DATUM IS MEAN SEA LEVEL
DEPTH CURVES AND SOUNDINGS IN FEET—DATUM IS MEAN LOW WATER
SHORELINE SHOWN REPRESENTS THE APPROXIMATE LINE OF MEAN HIGH WATER
THE MEAN RANGE OF TIDE IS APPROXIMATELY 0.7 FEET

THIS MAP COMPLIES WITH NATIONAL MAP ACCURACY STANDARDS
FOR SALE BY U.S. GEOLOGICAL SURVEY, WASHINGTON, D.C. 20242
A FOLDER DESCRIBING TOPOGRAPHIC MAPS AND SYMBOLS IS AVAILABLE ON REQUEST

USGS
Historical File
Topographic Division



U.S.G.S.
FILE COPY
TOPOGRAPHIC DIVISION

ROAD CLASSIFICATION
Heavy-duty ——— Light-duty ———
Medium-duty ——— Unimproved dirt ———
U.S. Route ——— State Route ———

ORANGE PARK, FLA.
NW/4 ORANGE PARK 15' QUADRANGLE
N3007.5—W8137.5/7.5

1964
AMS 4644 II NW—SERIES V847

DEC 17 1965
3625