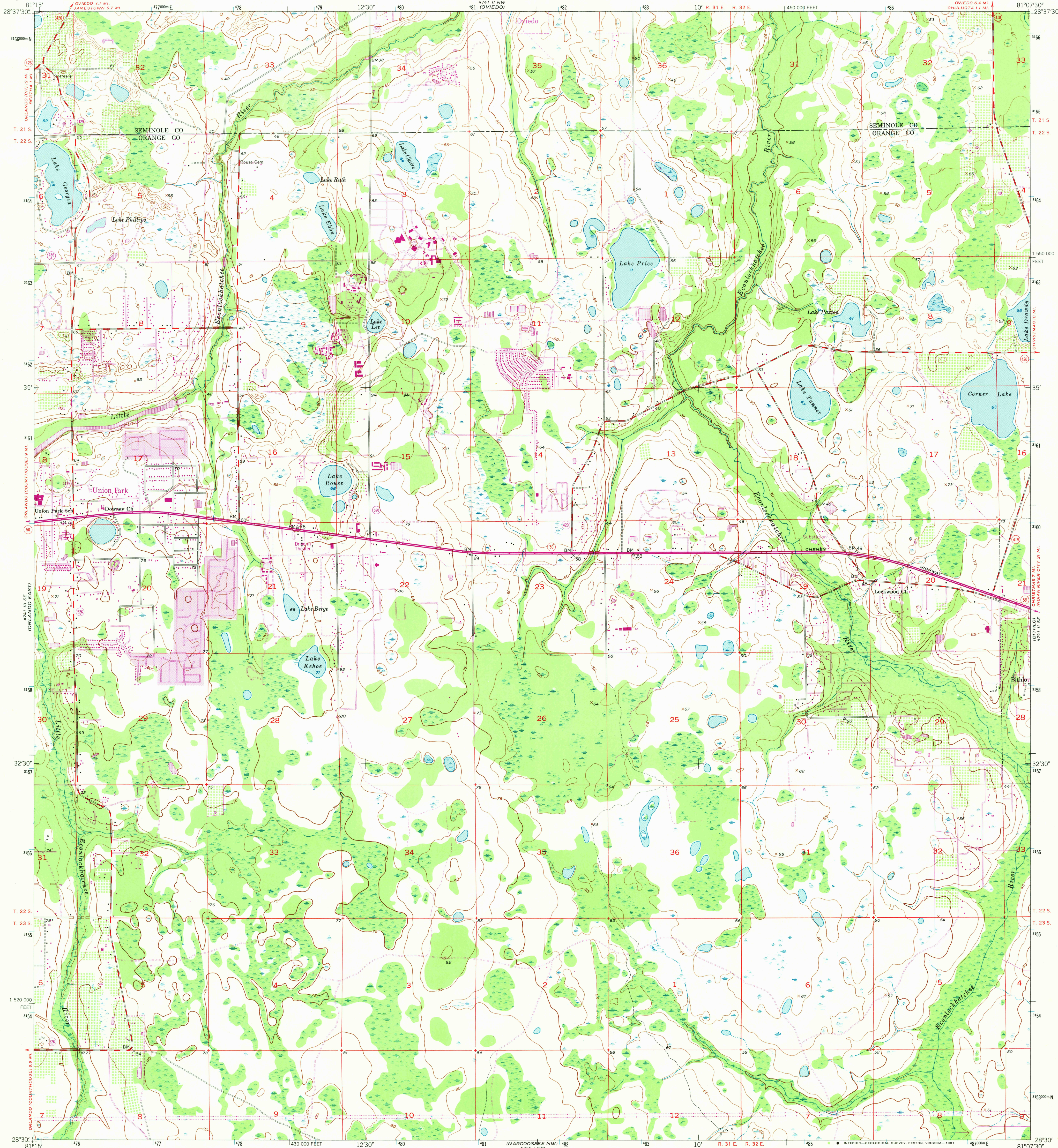
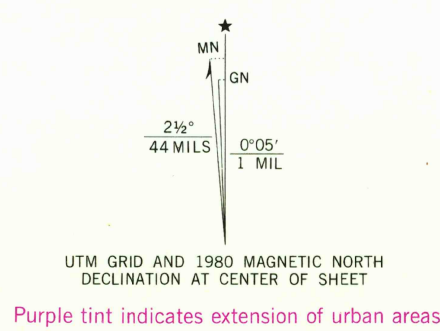


UNITED STATES
DEPARTMENT OF THE INTERIOR
GEOLOGICAL SURVEY

OVIEDO SW QUADRANGLE
FLORIDA
7.5 MINUTE SERIES (TOPOGRAPHIC)



Maped, edited, and published by the Geological Survey
Control by USGS and USC&GS
Culture and drainage in part compiled by U. S. Corps of Engineers
and Geological Survey from aerial photographs taken 1951
Topography by plane-table surveys 1952-1953
Polyconic projection
10,000-foot grid based on Florida coordinate system,
east zone
1000-meter Universal Transverse Mercator grid ticks,
zone 17, shown in blue. 1927 North American Datum
To place on the predicted North American Datum 1983
move the projection lines 27 meters south and
19 meters west as shown by dashed corner ticks
Revisions shown in purple compiled from aerial photographs
taken 1977 and other source data. This information not
field checked. Map edited 1980



THIS MAP COMPLIES WITH NATIONAL MAP ACCURACY STANDARDS
FOR SALE BY U. S. GEOLOGICAL SURVEY, RESTON, VIRGINIA 22092
A FOLDER DESCRIBING TOPOGRAPHIC MAPS AND SYMBOLS IS AVAILABLE ON REQUEST



ROAD CLASSIFICATION
Heavy-duty 4 LANE 6 LANE Light-duty
Medium-duty 4 LANE 6 LANE Unimproved dirt
U. S. Route State Route
OVIEDO SW, FLA.
N2830-W8107.5/7.5
1953
PHOTOREVISED 1980
DMA 4741 II SW-SERIES Y847

MAY 28 1981
2630