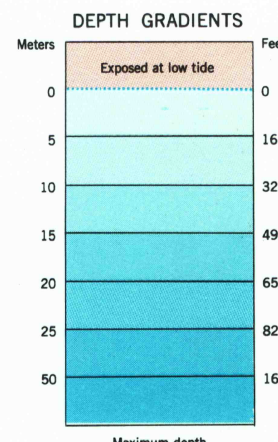
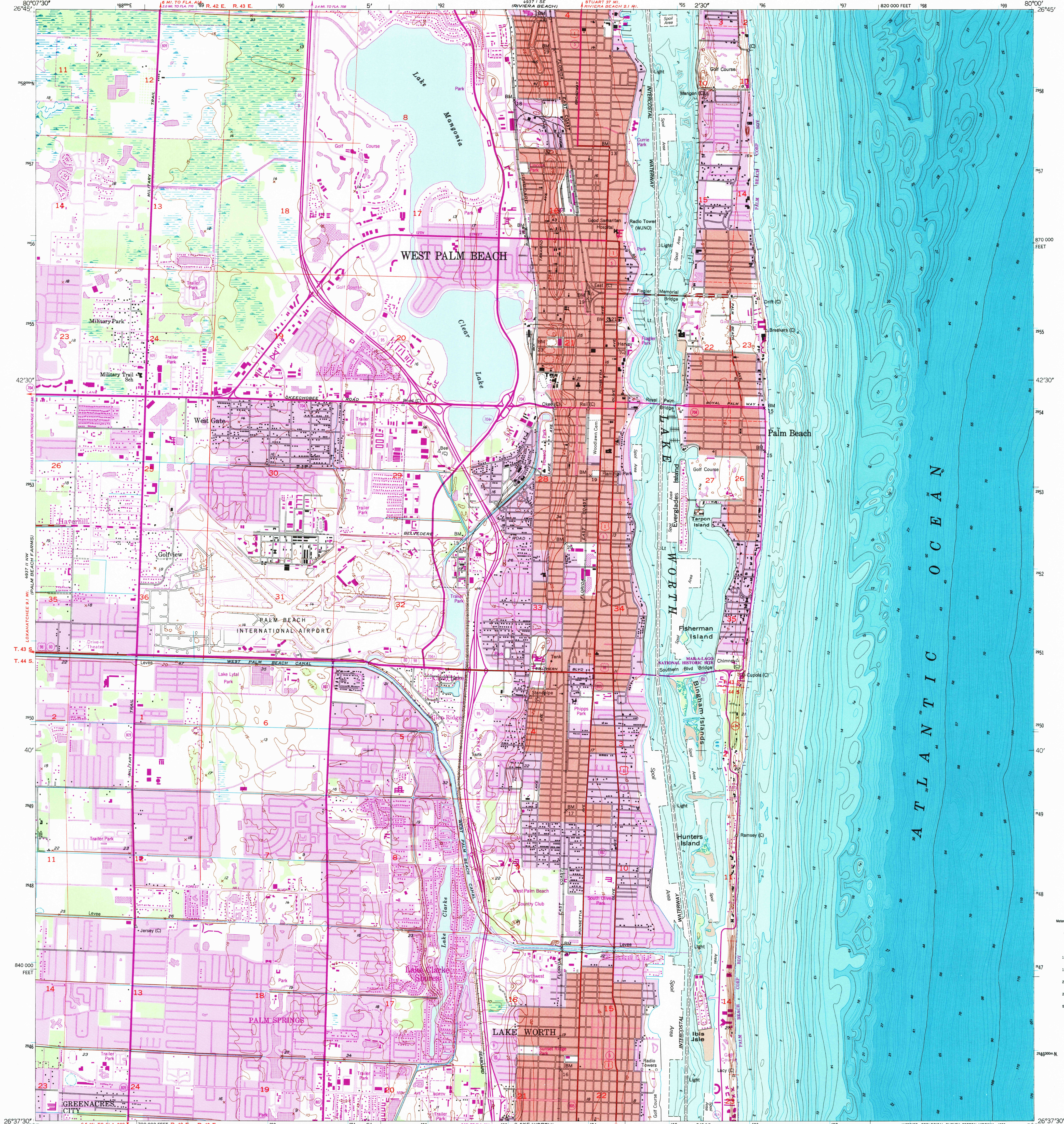


UNITED STATES
DEPARTMENT OF THE INTERIOR
GEOLOGICAL SURVEY

UNITED STATES
DEPARTMENT OF COMMERCE
COAST AND GEODETIC SURVEY

PALM BEACH QUADRANGLE
FLORIDA-PALM BEACH CO.
7.5 MINUTE SERIES (TOPOGRAPHIC-BATHYMETRIC)



Map by U. S. Coast and Geodetic Survey
and National Ocean Service
Edited and published by the Geological Survey
Control by NOS/NOAA(C) and Florida Geodetic Survey
Planimetry in part by photogrammetric methods from aerial
photographs taken 1942 and 1945. Topography by planimetric
surveys 1945. Field checked 1946.
Bathymetry compiled by the National Ocean Service from
tide-coordinated hydrographic surveys. This information
is not intended for navigational purposes.
Mean low water (dotted) line and mean high water (heavy solid) line
compiled by NOS from tide-coordinated aerial photographs. Apparent
shoreline (outer edge of vegetation) shown by light solid line.
Polyconic projection. 1927 North American Datum.
10,000-foot grid ticks based on Florida coordinate system, east zone
1000-meter Universal Transverse Mercator grid ticks,
zone 17, shown in blue.
To place on the predicted North American Datum 1983,
move the projection lines 36 meters south and
23 meters west as shown by dashed corner ticks.
There may be private inholdings within the boundaries of the
National or State reservations shown on this map.
No distinction is made between dwellings, barns,
commercial and industrial buildings.
Red tint indicates areas in which only landmark buildings are shown.
Revisions shown in purple and woodland compiled by the Geological
Survey in cooperation with State of Florida agencies from aerial
photographs taken 1967 and other sources. This information
not field checked. Map edited 1983.

NATIONAL OCEAN SERVICE
HYDROGRAPHIC SURVEY INDEX

SURVEY NUMBER	SURVEY DATE	SURVEY SCALE	SURVEY LINE SPACING (NAUT. MILES)
H-1604	1884	1:20,000	10-25
H-1605	1892	1:20,000	03-10
H-1606	1929	1:10,000	01-09
H-1607	1964	1:20,000	40-50

HYDROGRAPHIC SURVEY INFORMATION

NOS CHART 11472, AUGUST 2, 1980 1:40,000
NOS CHART 11467, SEPTEMBER 20, 1980 1:40,000

SCALE 1:24,000

CONTOUR INTERVAL 5 FEET
NATIONAL GEODETIC VERTICAL DATUM OF 1929

BATHYMETRIC CONTOUR INTERVAL 1 METER WITH SUPPLEMENTARY
0.5 METER CONTOURS-DATUM IS MEAN LOW WATER
THE RELATIONSHIP BETWEEN THE TWO DATUMS IS VARIABLE

BASE MAP COMPILES WITH NATIONAL MAP ACCURACY STANDARDS
BATHYMETRIC SURVEY DATA COMPILES WITH INTERNATIONAL HYDROGRAPHIC
ORGANIZATION (IHO) SPECIAL PUBLICATION 44 ACCURACY STANDARDS
AND/OR STANDARDS USED AT THE DATE OF THE SURVEY
FOR SALE BY U.S. GEOLOGICAL SURVEY
DENVER, COLORADO 80225 OR RESTON, VIRGINIA 22092
AND NATIONAL OCEAN SERVICE, ROCKVILLE, MARYLAND 20852
A FOLDER DESCRIBING TOPOGRAPHIC MAPS AND SYMBOLS IS AVAILABLE ON REQUEST

ROAD CLASSIFICATION

Heavy-duty ——— Light-duty ———
Medium-duty ——— Unimproved dirt ———
Interstate Route ——— U. S. Route ——— State Route ———

FLORIDA

QUADRANGLE LOCATION

UTM GRID AND 1986 MAGNETIC NORTH
DECLINATION AT CENTER OF SHEET

Purple tint indicates extension of urban areas

PALM BEACH, FLA.
26080-F1-TB-024
1946
PHOTOREVISED 1983
BATHYMETRY ADDED 1986
DMA 4937 II NE-SERIES V847

ISSN 0-607-14198-0
9 780607 141986