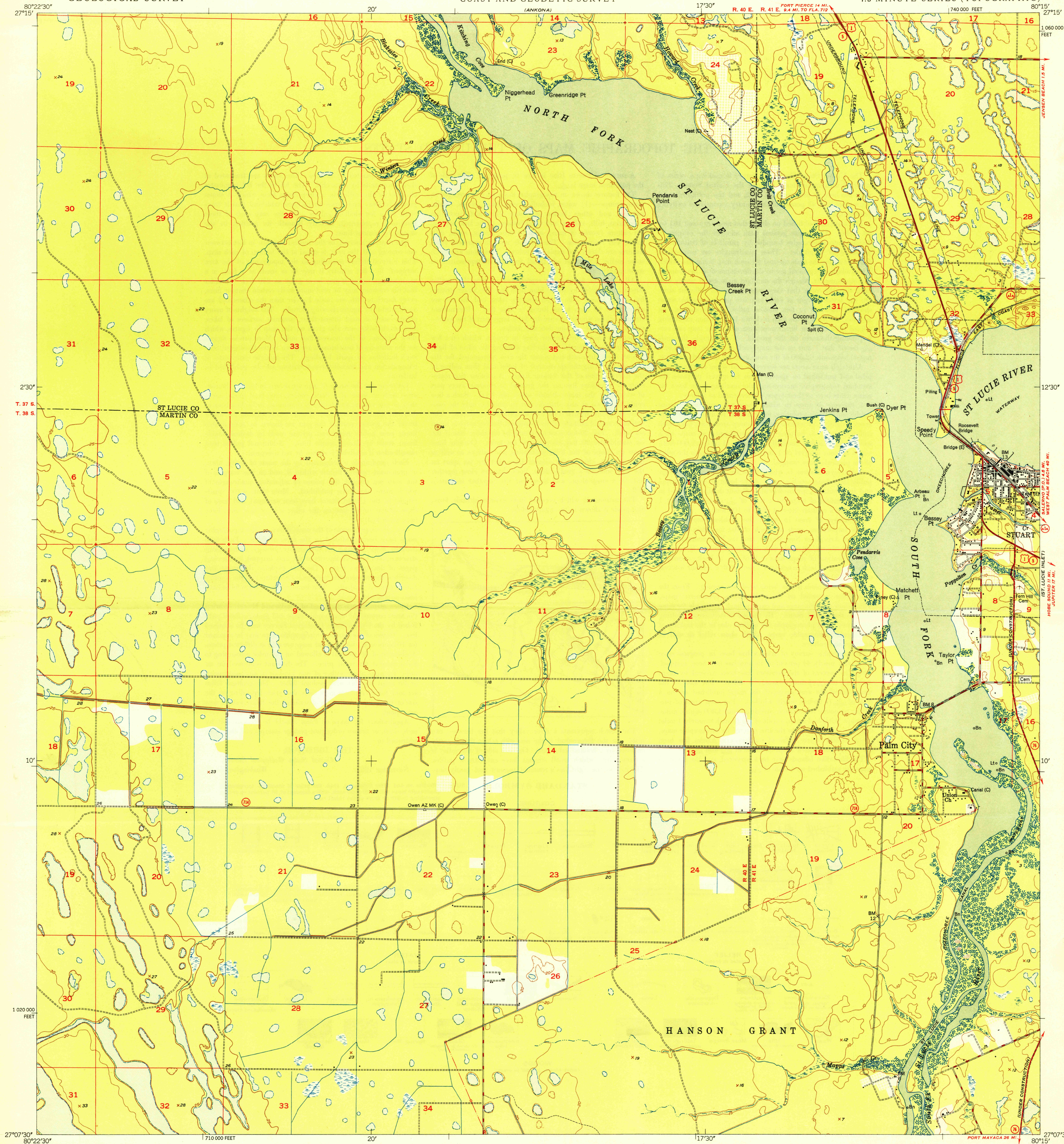


U.S.G.S.  
FILE COPY  
Inspection and Editing.

UNITED STATES  
DEPARTMENT OF THE INTERIOR  
GEOLOGICAL SURVEY

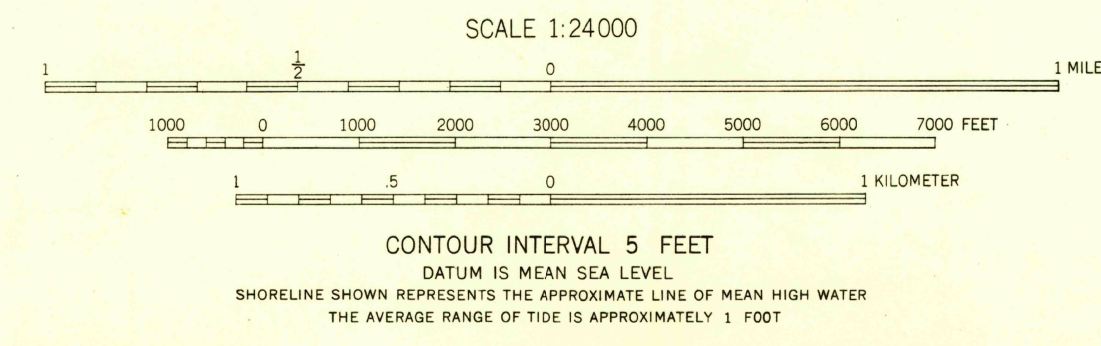
UNITED STATES  
DEPARTMENT OF COMMERCE  
COAST AND GEODETIC SURVEY

PALM CITY QUADRANGLE  
FLORIDA  
7.5 MINUTE SERIES (TOPOGRAPHIC)



Maped by U.S. Coast & Geodetic Survey  
Edited and published by the Geological Survey  
Control by USC&GS (C) and USED (E)  
Culture and drainage in part compiled from  
aerial photographs taken 1946. Field check 1948  
Topography by plane-table methods 1948  
Polyconic projection, 1927 North American datum  
10,000-foot grid based on Florida coordinate system,  
east zone  
No distinction is made between dwellings, barns,  
commercial and industrial buildings

TRUE NORTH  
MAGNETIC NORTH  
APPROXIMATE MEAN  
DECLINATION, 1948



THIS MAP COMPLIES WITH NATIONAL MAP ACCURACY STANDARDS  
FOR SALE BY U. S. GEOLOGICAL SURVEY, WASHINGTON 25, D. C.

USCS  
Historical File  
Topographic Division

ROAD CLASSIFICATION  
HARD-SURFACE ALL WEATHER ROADS  
Heavy-duty ——— LANE 18 LANE Improved dirt ———  
Medium-duty ——— LANE 18 LANE Unimproved dirt ———  
Loose-surface, graded, or narrow hard-surface, ———  
U. S. Route ——— State Route ———

PALM CITY, FLA.  
N2707.5-W8015/7.5  
EDITION OF 1950