

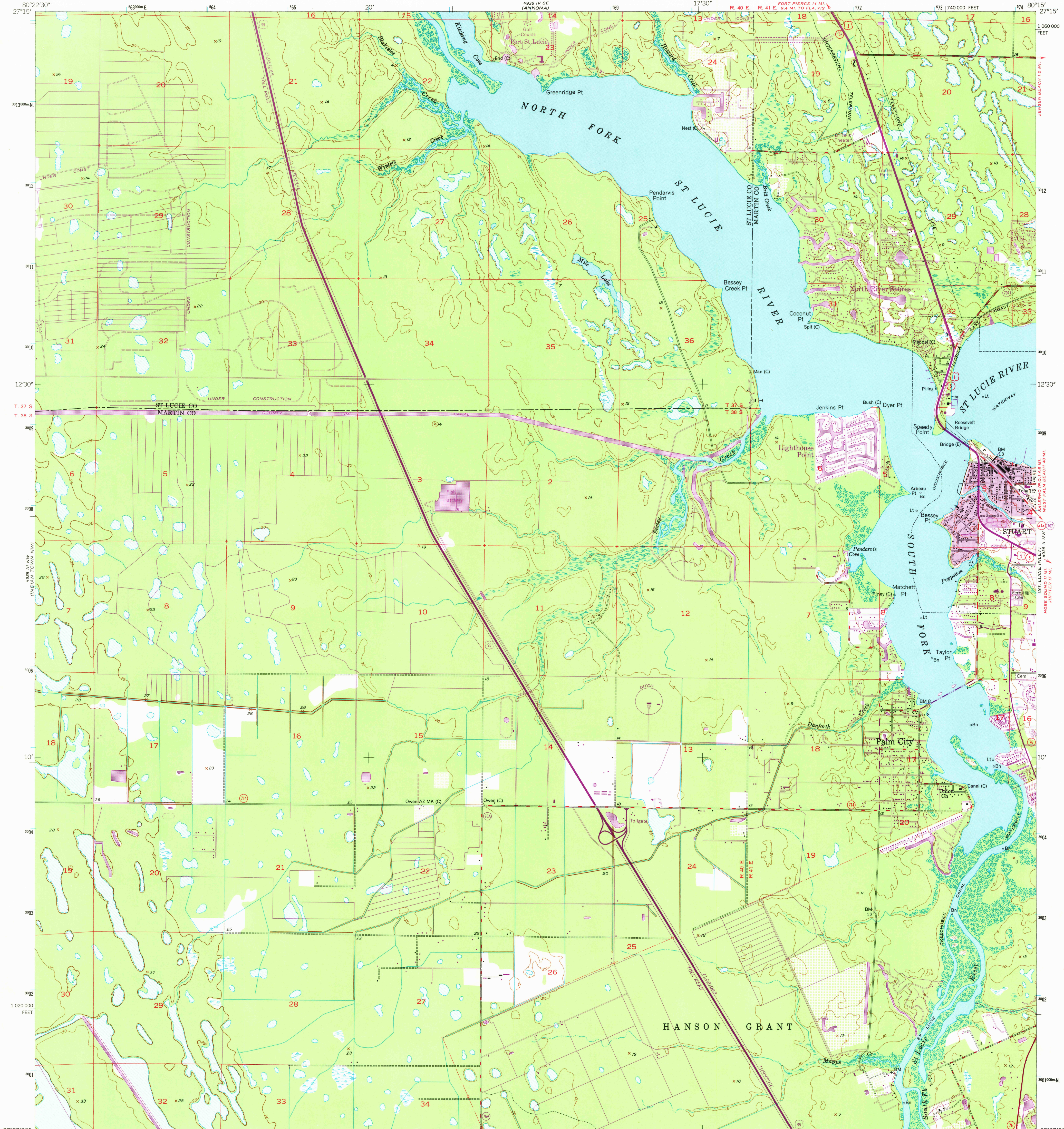
4938 I NW
PORT PIERCE SW

UNITED STATES
DEPARTMENT OF THE INTERIOR
GEOLOGICAL SURVEY

UNITED STATES
DEPARTMENT OF COMMERCE
COAST AND GEODETIC SURVEY

PALM CITY QUADRANGLE
FLORIDA
7.5 MINUTE SERIES (TOPOGRAPHIC)

4938 I SW
JENSEN BEACH SW



Mapped by U.S. Coast & Geodetic Survey
Edited and published by the Geological Survey
Control by USC&GS (C) and USED (E)

Culture and drainage in part compiled from
aerial photographs taken 1946. Field check 1948
Topography by plane-table methods 1948

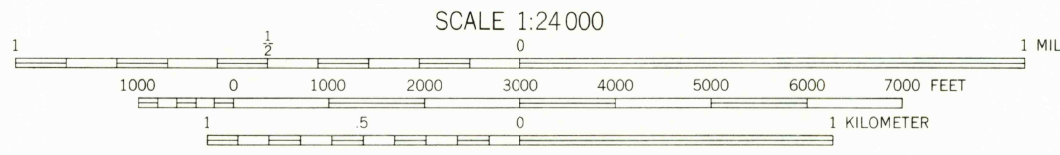
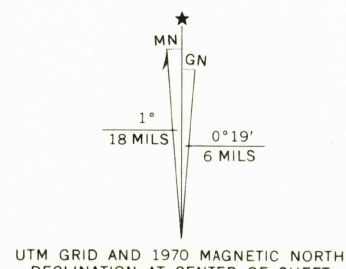
Polyconic projection, 1927 North American datum
10,000-foot grid based on Florida coordinate system,
east zone

No distinction is made between dwellings, barns,
commercial and industrial buildings

1000-meter Universal Transverse Mercator grid ticks,
zone 17, shown in blue

Revisions shown in purple compiled by the Geological Survey from
aerial photographs taken 1970. This information not field checked

Purple tint indicates extension of urban areas



CONTOUR INTERVAL 5 FEET

DATUM IS MEAN SEA LEVEL

SHORELINE SHOWN REPRESENTS THE APPROXIMATE LINE OF MEAN HIGH WATER
THE AVERAGE RANGE OF TIDE IS APPROXIMATELY 1 FOOT

THIS MAP COMPLIES WITH NATIONAL MAP ACCURACY STANDARDS
FOR SALE BY U.S. GEOLOGICAL SURVEY, WASHINGTON, D. C. 20242
A FOLDER DESCRIBING TOPOGRAPHIC MAPS AND SYMBOLS IS AVAILABLE ON REQUEST



USGS
HISTORICAL FILE
TOPOGRAPHIC DIVISION

ROAD CLASSIFICATION

HARD-SURFACE ALL WEATHER ROADS DRY WEATHER ROADS
Heavy-duty LANE IS LANE Improved dirt LANE IS LANE
Medium-duty LANE IS LANE Unimproved dirt LANE IS LANE
Loose-surface, graded, or narrow hard-surface LANE IS LANE
Interstate Route U.S. Route State Route

PALM CITY, FLA.
N2707.5-W8015.7.5

1948
PHOTOREVISED 1970
AMS 4938 III NE-SERIES V847