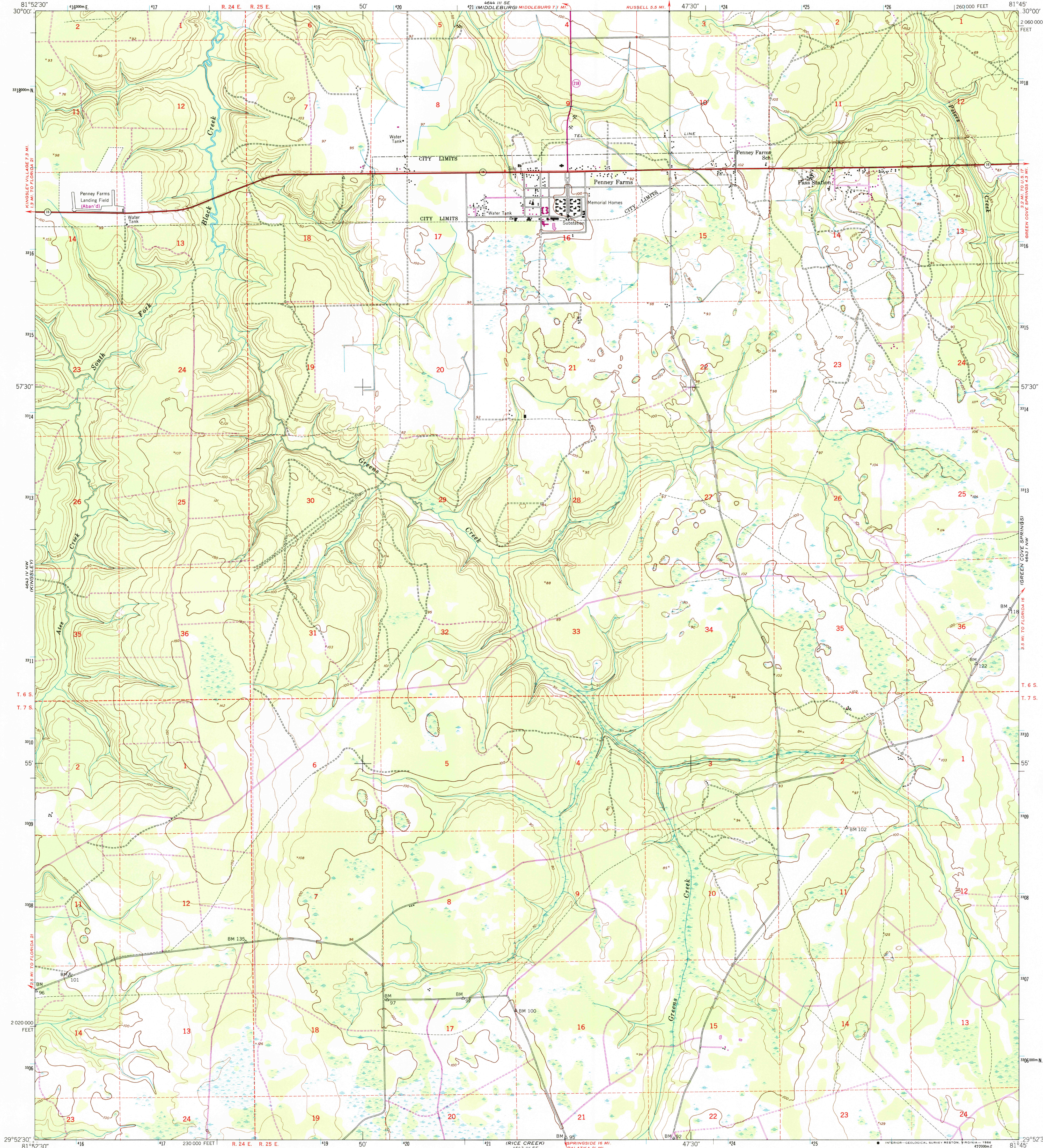


UNITED STATES
DEPARTMENT OF THE INTERIOR
GEOLOGICAL SURVEY

UNITED STATES
DEPARTMENT OF THE ARMY
CORPS OF ENGINEERS

PENNEY FARMS QUADRANGLE
FLORIDA-CLAY CO.
7.5 MINUTE SERIES (TOPOGRAPHIC)
NE/4 ATES CREEK 15' QUADRANGLE



Mapped by the Army Map Service
Published for civil use by the Geological Survey
Control by USC&GS, USCE, and Florida Geodetic Survey
Topography from aerial photographs by multiplex methods
Aerial photographs taken 1946-1947. Field check 1949
Polyconic projection. 1927 North American Datum
10,000-foot grid based on Florida coordinate system,
east zone.
1,000-meter Universal Transverse Mercator grid ticks,
zone 17, shown in blue
To place on the predicted North American Datum 1983
move the projection lines 23 meters south and
17 meters west as shown by dashed corner ticks
No distinction is made between barns, dwellings,
commercial and industrial buildings

Dashed land lines indicate approximate locations
Unchecked elevations are shown in brown
Revisions shown in purple compiled by the Geological Survey from aerial
photographs taken 1970. This information not field checked.

THIS MAP COMPLIES WITH NATIONAL MAP ACCURACY STANDARDS
FOR SALE BY U.S. GEOLOGICAL SURVEY, RESTON, VIRGINIA 22092
A FOLDER DESCRIBING TOPOGRAPHIC MAPS AND SYMBOLS IS AVAILABLE ON REQUEST

Map photoinspected 1976
No major culture or drainage changes observed

ROAD CLASSIFICATION
Heavy-duty 4 LANE 16 LANE Light-duty
Medium-duty 4 LANE 16 LANE Unimproved dirt
U.S. Route State Route



USGS NMD HISTORICAL MAP
AUG 20 1986
REC'D FILE COPY

PENNEY FARMS, FLA.
NE/4 ATES CREEK 15' QUADRANGLE
29081-H7-TF-024
PHOTOINSPECTED 1976
1949
PHOTOREVISED 1970
DMA 4643 IV NE-SERIES 5847