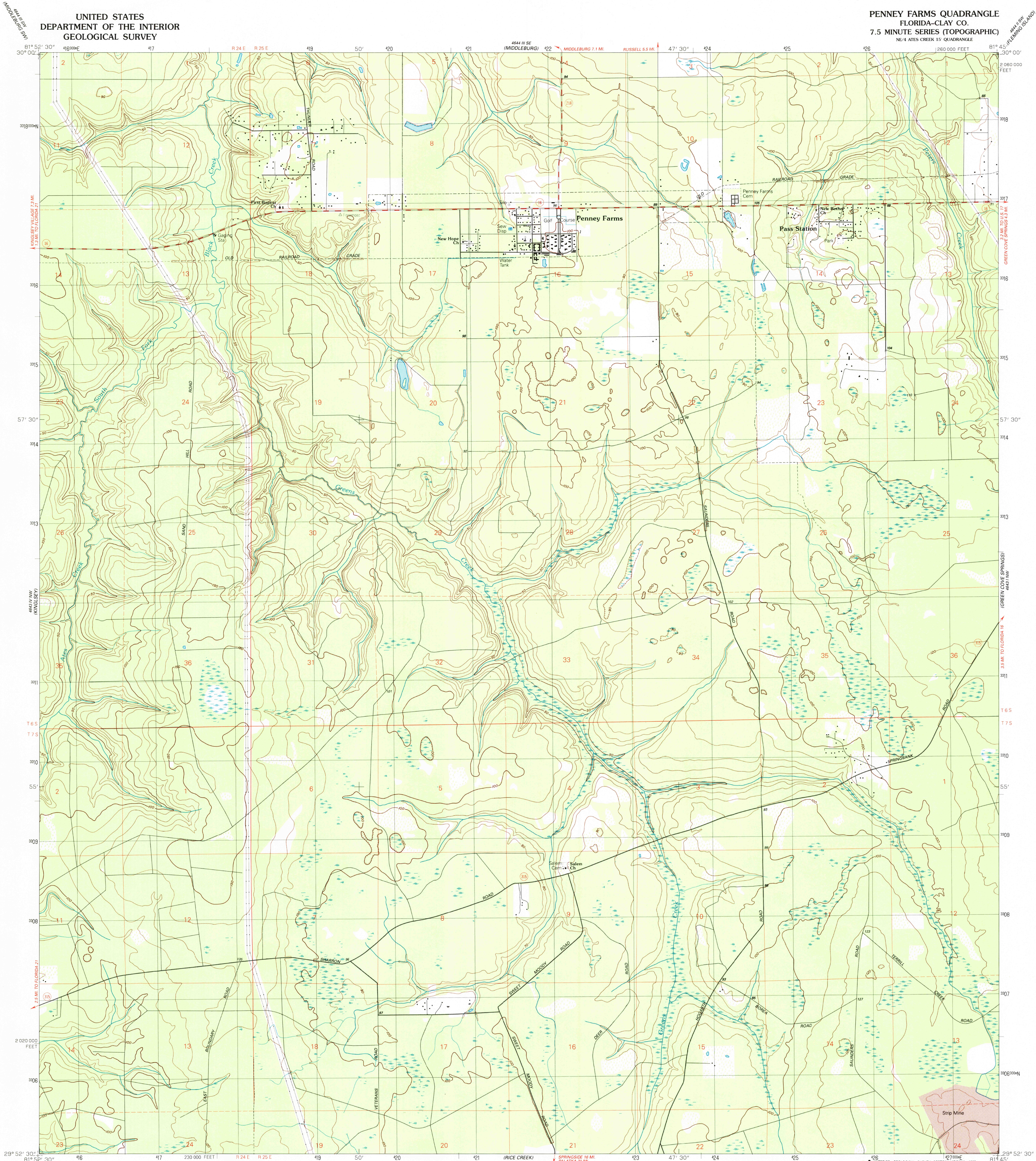


UNITED STATES
DEPARTMENT OF THE INTERIOR
GEOLOGICAL SURVEY

PENNEY FARMS QUADRANGLE
FLORIDA-CLAY CO.
7.5 MINUTE SERIES (TOPOGRAPHIC)
NE/4 ATE'S CREEK 15 QUADRANGLE



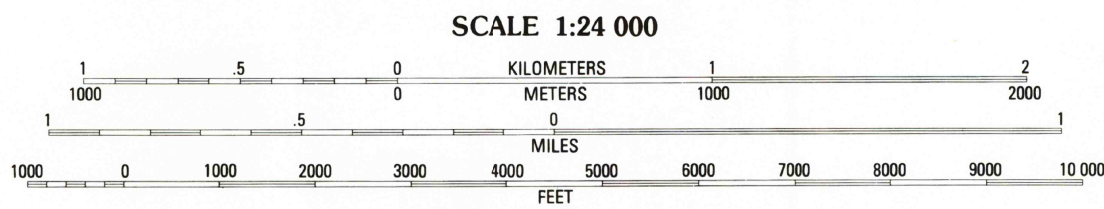
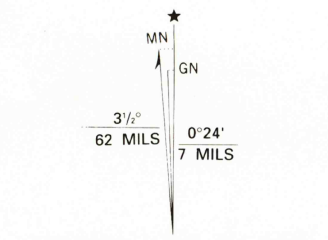
Produced by the United States Geological Survey

Control by USGS and NOS/NOAA

Topography by photogrammetric methods from aerial photographs taken 1946-47. Field checked 1949. Revised from aerial photographs taken 1987-88. Field checked 1989. Map edited 1993

Projection and 10,000-foot grid ticks: Florida coordinate system, east zone (transverse Mercator)
1000-meter Universal Transverse Mercator grid, zone 17
1927 North American Datum (NAD 27)

North American Datum of 1983 (NAD 83) is shown by dashed corner ticks
The values of the shift between NAD 27 and NAD 83 for 7.5-minute intersections are given in USGS Bulletin 1875



COMPLIES WITH U.S. GEOLOGICAL SURVEY STANDARDS FOR SPATIAL ACCURACY - CLASS 2
FOR SALE BY U.S. GEOLOGICAL SURVEY, DENVER, COLORADO 80225, OR RESTON, VIRGINIA 22092
A FOLDER DESCRIBING TOPOGRAPHIC MAPS AND SYMBOLS IS AVAILABLE ON REQUEST



QUADRANGLE LOCATION

ROAD CLASSIFICATION	
Primary highway, hard surface	Light-duty road, hard or improved surface
Secondary highway, hard surface	Unimproved road
Interstate Route	U. S. Route
	State Route



PENNEY FARMS, FLA.

NE/4 ATE'S CREEK 15 QUADRANGLE
29081-H7-TF-024

1993

DMA 4643 IV NE-SERIES V847