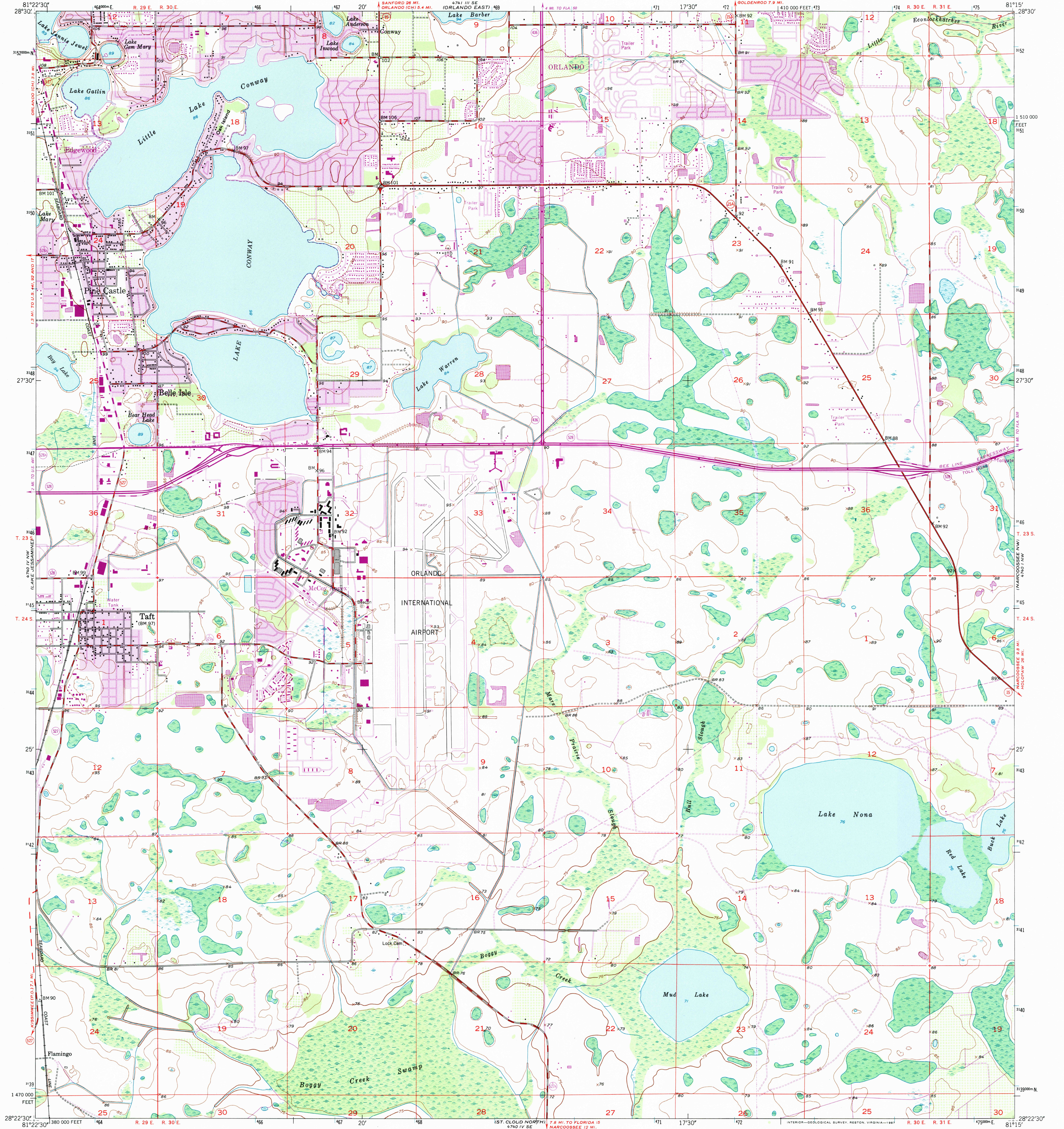
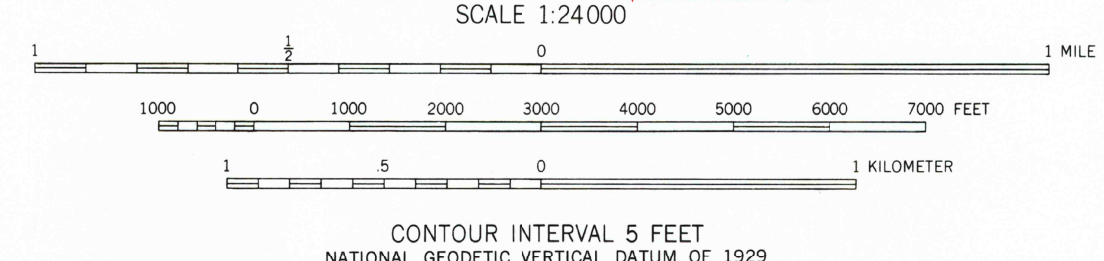
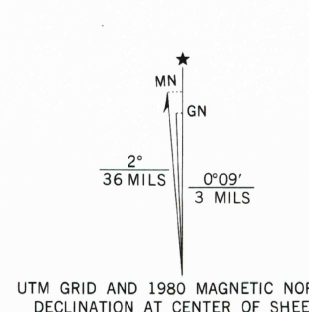


UNITED STATES
DEPARTMENT OF THE INTERIOR
GEOLOGICAL SURVEY

PINE CASTLE QUADRANGLE
FLORIDA—ORANGE CO.
7.5 MINUTE SERIES (TOPOGRAPHIC)



Maped, edited, and published by the Geological Survey
Control by USGS, USC&GS, and USCE
Culture and drainage in part compiled by U. S. Corps of Engineers
from aerial photographs taken 1950. Topography by plane-table
surveys 1953
Polyconic projection
10,000-foot grid based on Florida coordinate system, east zone
1000-meter Universal Transverse Mercator grid ticks,
zone 17, shown in blue. 1927 North American Datum
To place on the predicted North American Datum 1983
move the projection lines 28 meters south and
19 meters west as shown by dashed corner ticks
Revisions shown in purple compiled from aerial photographs
taken 1977 and other source data. This information not
field checked. Map edited 1980
Purple tint indicates extension of urban areas



ROAD CLASSIFICATION

- Heavy-duty
- Medium-duty
- Light-duty
- Unimproved dirt
- State Route

RECEIVED
MAY 31 1999
USGS NMD
HISTORICAL MAP ARCHIVES

PINE CASTLE, FLA.
28081-D3-TF-024
1953
PHOTO REVISSED 1980
DMA 4740 IV NE-SERIES V847

THIS MAP COMPLIES WITH NATIONAL MAP ACCURACY STANDARDS
FOR SALE BY U.S. GEOLOGICAL SURVEY, DENVER, COLORADO 80225, OR RESTON, VIRGINIA 22082
A FOLDER DESCRIBING TOPOGRAPHIC MAPS AND SYMBOLS IS AVAILABLE ON REQUEST

QUADRANGLE LOCATION

FLORIDA

91780607142235