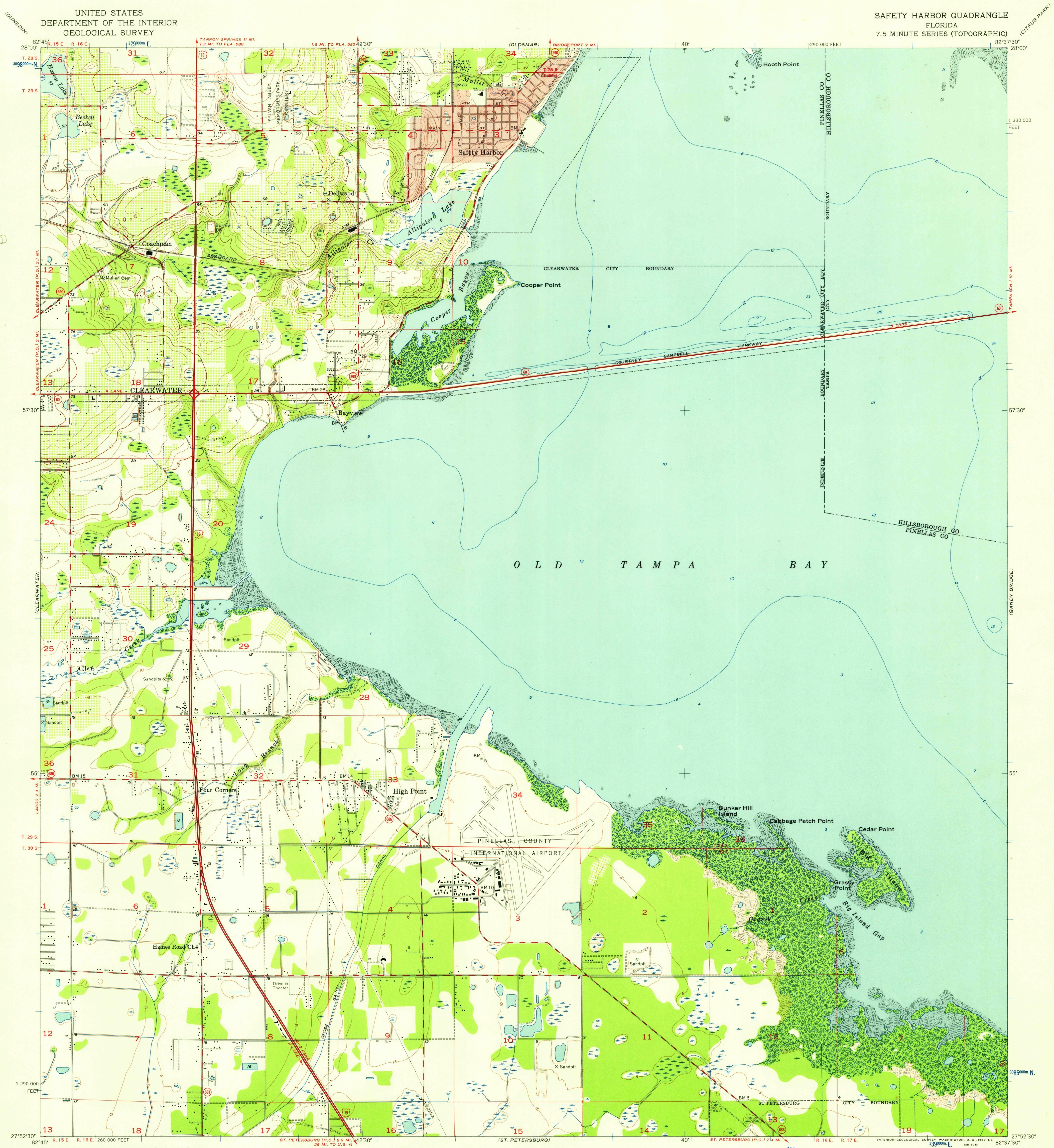


UNITED STATES
DEPARTMENT OF THE INTERIOR
GEOLOGICAL SURVEY

SAFETY HARBOR QUADRANGLE
FLORIDA
7.5 MINUTE SERIES (TOPOGRAPHIC)



Maped, edited, and published by the Geological Survey
Control by USGS, USC&GS, and Florida Geodetic Survey
Culture and drainage in part compiled from aerial photographs
taken 1954. Topography by plane-table surveys 1955-1956
Mapped 1943, remapped 1956
Hydrography compiled from USC&GS chart 587 (1952)
Polyconic projection. 1927 North American datum
10,000-foot grid based on Florida coordinate system, west zone
1000-meter Universal Transverse Mercator grid ticks,
zone 17, shown in blue
Red tint indicates area in which only
landmark buildings are shown

TRUE NORTH
MAGNETIC NORTH
APPROXIMATE MEAN
DECLINATION, 1956

SCALE 1:24,000
1 0 1000 2000 3000 4000 5000 6000 7000 FEET
1 5 0 5 10 KILOMETER
CONTOUR INTERVAL 5 FEET
DATUM IS MEAN SEA LEVEL
DEPTH CURVES AND SOUNDINGS IN FEET—DATUM IS MEAN LOW WATER
SHORELINE SHOWN REPRESENTS THE APPROXIMATE LINE OF MEAN HIGH WATER
THE AVERAGE RANGE OF TIDE IS APPROXIMATELY 2 FEET
THIS MAP COMPLIES WITH NATIONAL MAP ACCURACY STANDARDS
FOR SALE BY U. S. GEOLOGICAL SURVEY, WASHINGTON 25, D. C.
A FOLDER DESCRIBING TOPOGRAPHIC MAPS AND SYMBOLS IS AVAILABLE ON REQUEST



USGS
Historical File
Topographic Division
ROAD CLASSIFICATION
Heavy-duty ——— Light-duty ———
Medium-duty ——— Unimproved dirt ———
U. S. Route ——— State Route ———
U.S.G.S.
FILE COPY
TOPOGRAPHIC DIVISION
SAFETY HARBOR, FLA.
N2752.5-W8237.5/7.5
1956
MAY 10 1957