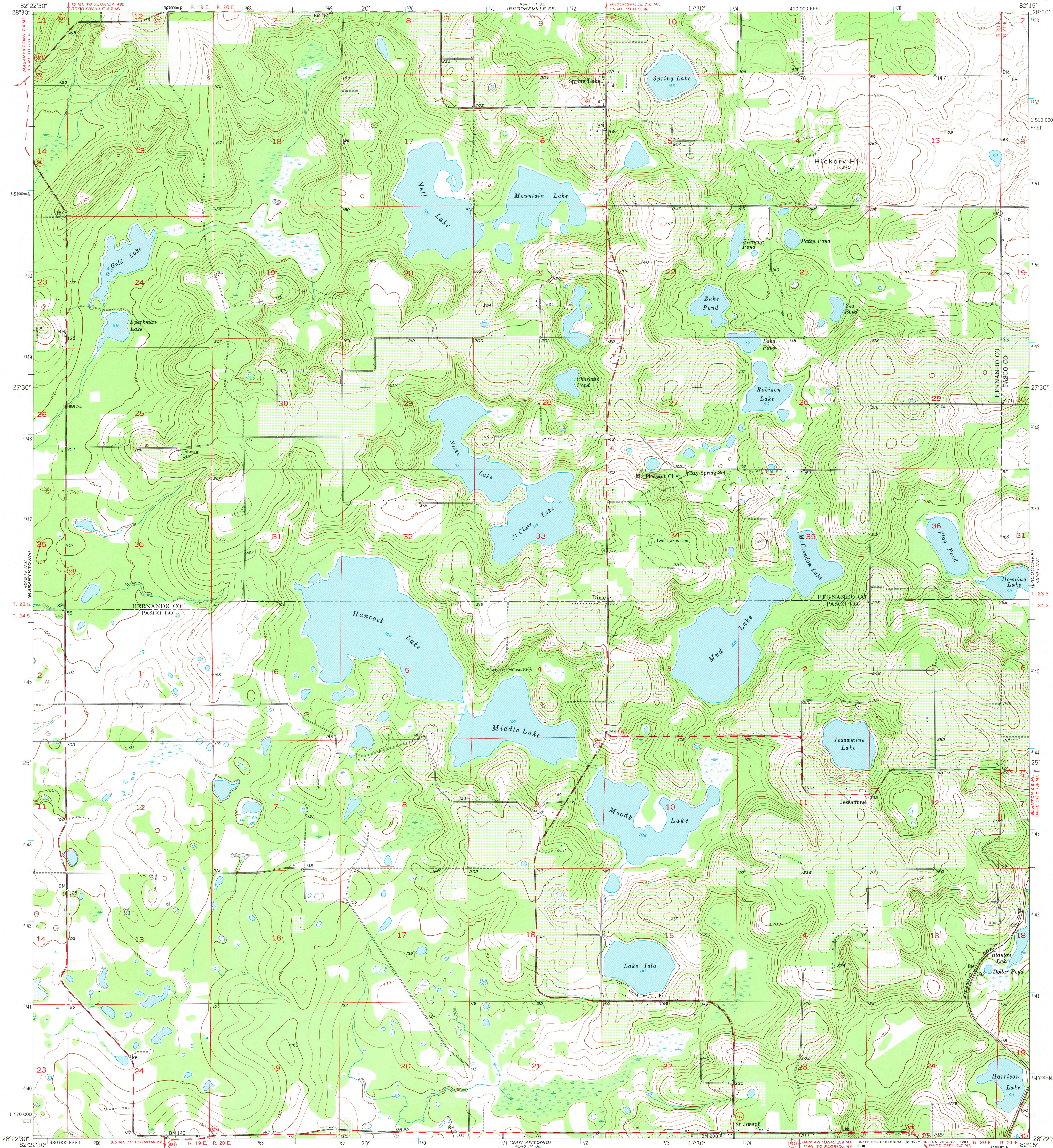


UNITED STATES  
DEPARTMENT OF THE INTERIOR  
GEOLOGICAL SURVEY

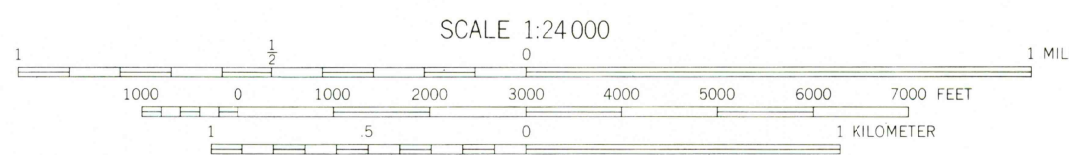
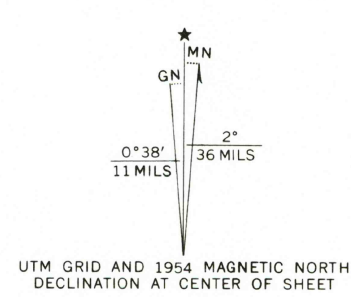
SPRING LAKE QUADRANGLE  
FLORIDA  
7.5 MINUTE SERIES (TOPOGRAPHIC)



Mapped, edited, and published by the Geological Survey

Control by USGS and USC&GS  
Topography by photogrammetric methods from aerial photographs  
taken 1951. Field checked 1954

Polyconic projection. 10,000-foot grid ticks based on Florida  
coordinate system, west zone. 1000-meter Universal Transverse  
Mercator grid ticks, zone 17, shown in blue. 1927 North  
American Datum. To place on the predicted North American  
Datum 1983, move the projection lines 28 meters south and  
16 meters west as shown by dashed corner ticks



CONTOUR INTERVAL 10 FEET  
NATIONAL GEODETIC VERTICAL DATUM OF 1929

THIS MAP COMPLIES WITH NATIONAL MAP ACCURACY STANDARDS  
FOR SALE BY U. S. GEOLOGICAL SURVEY, RESTON, VIRGINIA 22092  
A FOLDER DESCRIBING TOPOGRAPHIC MAPS AND SYMBOLS IS AVAILABLE ON REQUEST



ROAD CLASSIFICATION  
Heavy-duty 4 LANE 6 LANE Light-duty  
Medium-duty 4 LANE 6 LANE Unimproved dirt  
U. S. Route  
State Route

SPRING LAKE, FLA.  
N8222 5-W8215/7.5

1954

AMS 4540 IV NE-SERIES V847

1/40