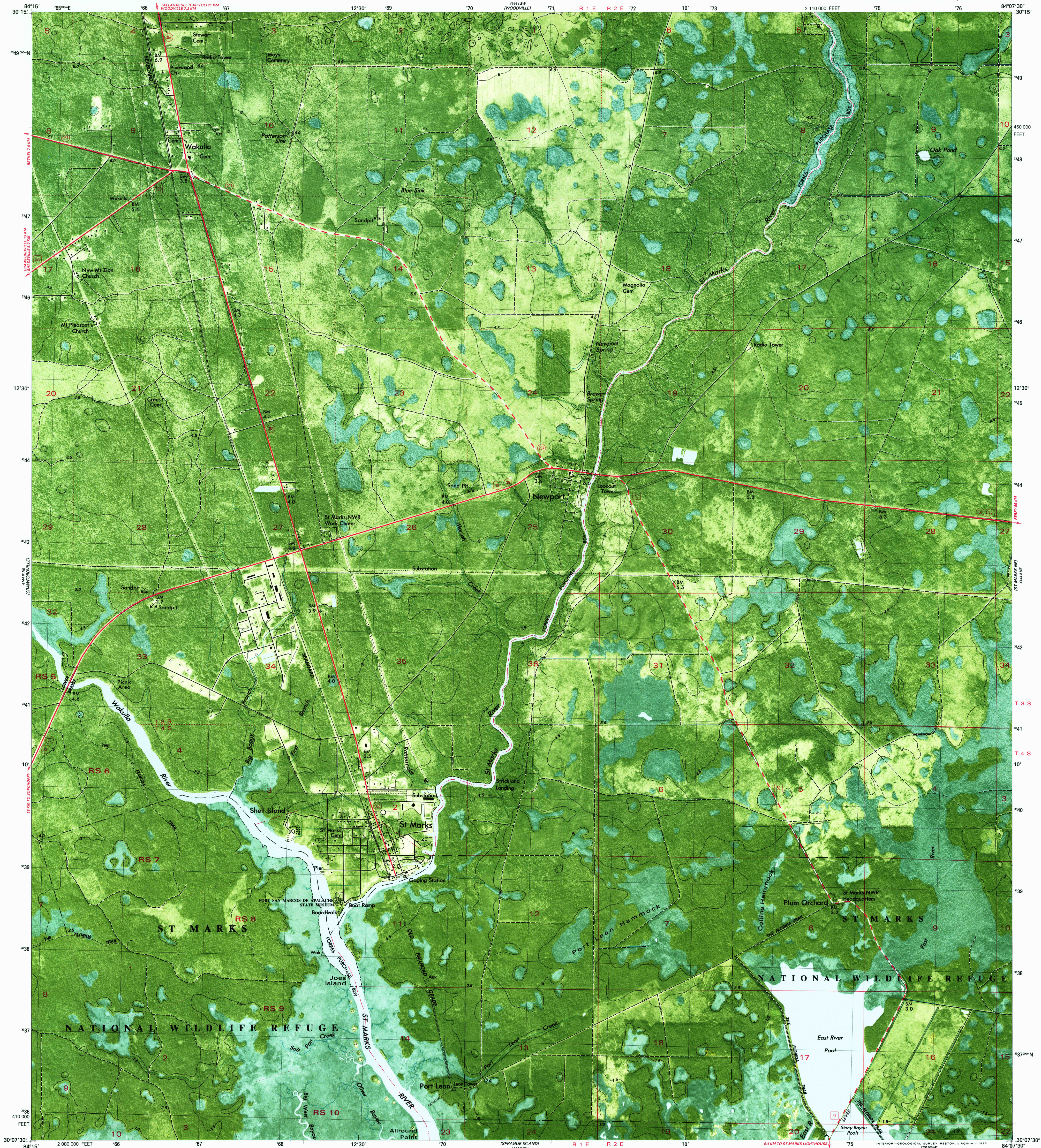


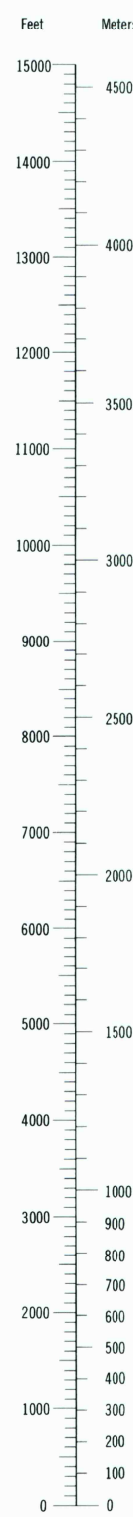
UNITED STATES  
DEPARTMENT OF THE INTERIOR  
GEOLOGICAL SURVEY

STATE OF FLORIDA

ST. MARKS QUADRANGLE  
FLORIDA - WAKULLA CO.  
7.5 MINUTE SERIES ORTHOPHOTOMAP (TOPOGRAPHIC)



CONVERSION  
SCALES

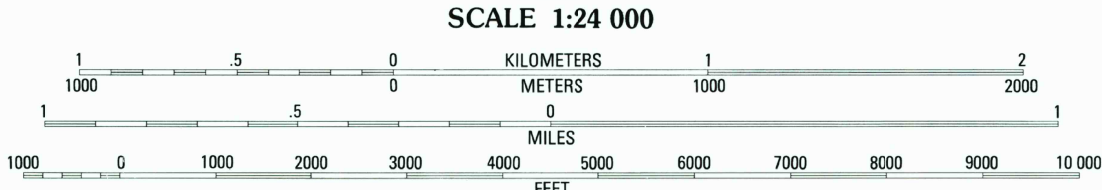
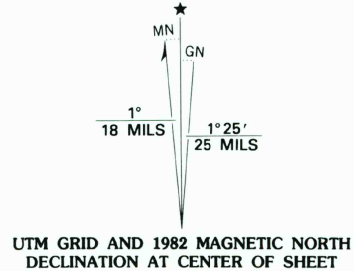


Feet	Meters
1	0.3048
2	0.6096
3	0.9144
4	1.2192
5	1.5240
6	1.8288
7	2.1336
8	2.4384
9	2.7432
10	3.0480

To convert feet to meters  
multiply by 0.3048  
To convert meters to feet  
multiply by 3.2808

Produced by the United States Geological Survey

Control by USGS and NOS/NOAA  
Orthophotomap prepared from aerial photograph taken  
January 9, 1976. Compiled by photogrammetric methods  
from aerial photographs taken March 1978  
Field checked 1981. Map edited 1982  
Supersedes topographic map dated 1954  
Projection and 10,000-foot grid ticks: Florida coordinate  
system, north zone (Lambert conformal conic)  
1000-meter Universal Transverse Mercator grid, zone 16  
1927 North American Datum  
To place on the predicted North American Datum 1983  
move the projection lines 20 meters south and  
10 meters west as shown by dashed corner ticks  
Dotted land lines established by private subdivision  
of the Forbes Purchase  
There may be private inholdings within the boundaries of  
the National or State reservations shown on this map



CONTOUR INTERVAL 1.5 METERS  
NATIONAL GEODETIC VERTICAL DATUM OF 1929  
CONTRAL ELEVATIONS SHOWN TO THE NEAREST 0.1 METER  
OTHER ELEVATION SHOWN TO THE NEAREST 0.5 METER  
THIS MAP COMPLIES WITH NATIONAL MAP ACCURACY STANDARDS  
FOR SALE BY U. S. GEOLOGICAL SURVEY  
DENVER, COLORADO 80225, OR RESTON, VIRGINIA 22092  
A FOLDER DESCRIBING TOPOGRAPHIC MAPS AND SYMBOLS IS AVAILABLE ON REQUEST

CONTOURS AND ELEVATIONS  
IN METERS



ROAD CLASSIFICATION  
Primary highway, hard surface  
Secondary highway, hard surface  
Trails  
Light-duty road, hard or improved surface  
Unimproved road  
Interstate Route  
U. S. Route  
State Route  
County Route

ST. MARKS, FLA.  
30084-B2-OM-024  
1982  
DMA 4144 II NW - SERIES V8470

