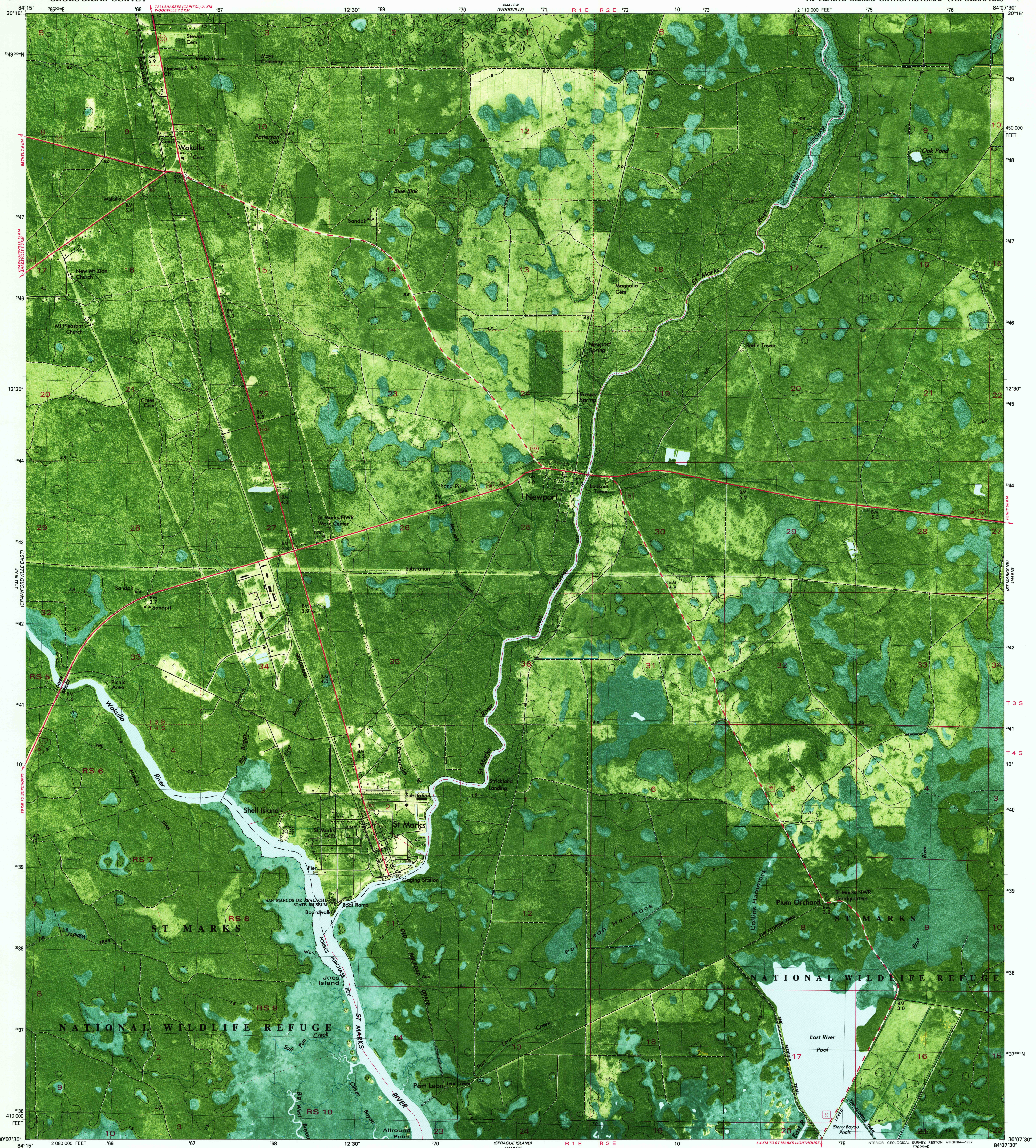


UNITED STATES
DEPARTMENT OF THE INTERIOR
GEOLOGICAL SURVEY

STATE OF FLORIDA

ST. MARKS QUADRANGLE
FLORIDA—WAKULLA CO.
7.5 MINUTE SERIES ORTHOPHOTOMAP (TOPOGRAPHIC)



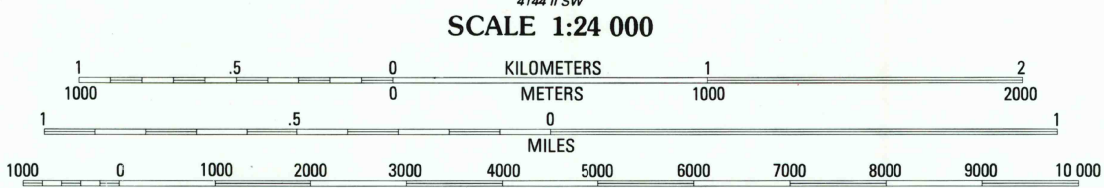
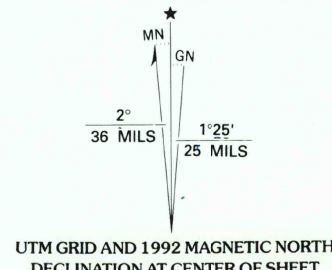
CONVERSION
SCALES



Feet	Meters
1	3048
2	6096
3	9144
4	12192
5	15240
6	18288
7	21336
8	24384
9	27432
10	30480

To convert feet to meters
multiply by 3048
To convert meters to feet
multiply by 3.2808

Produced by the United States Geological Survey
Control by USGS and NOS/NOAA
Orthophotomap prepared from aerial photograph taken
January 9, 1976. Compiled by photogrammetric methods
from aerial photographs taken March 1978
Field checked 1981. Map edited 1982
Supersedes topographic map dated 1954
Projection and 1000-meter grid, zone 16
Universal Transverse Mercator
10,000-foot grid ticks: Florida coordinate system,
north zone (Lambert conformal conic)
1000-meter Universal Transverse Mercator grid, zone 10
1927 North American Datum
The difference between 1927 North American Datum and North
American Datum of 1983 (NAD 83) for 7.5-minute intersections
is given in USGS Bulletin 1875. The NAD 83 is shown by
dashed corner ticks
There may be private inholdings within the boundaries of
the National or State reservations shown on this map
Dotted land lines established by private subdivision
of the Forbes Purchase
Photinspected from 1990 source; no major culture or
drainage changes observed. Boundaries and names revised 1992



THIS MAP COMPLIES WITH NATIONAL MAP ACCURACY STANDARDS
FOR SALE BY U. S. GEOLOGICAL SURVEY
DENVER, COLORADO 80225, OR RESTON, VIRGINIA 22092
A FOLDER DESCRIBING TOPOGRAPHIC MAPS AND SYMBOLS IS AVAILABLE ON REQUEST

QUADRANGLE LOCATION
CONTOURS AND ELEVATIONS
IN METERS

ROAD CLASSIFICATION
Primary highway,
hard surface
Secondary highway,
hard surface
Trails
Interstate Route
U. S. Route
State Route
County Route
Light-duty road, hard or
improved surface
Unimproved road

ST. MARKS, FLA.
30084-B2-OM-024
1982
MINOR REVISION 1992
DMA 4144 II NW-SERIES V847

