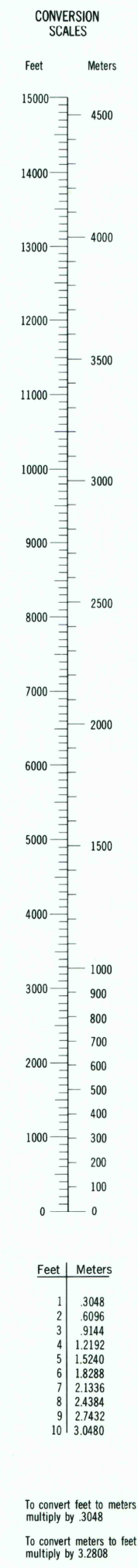
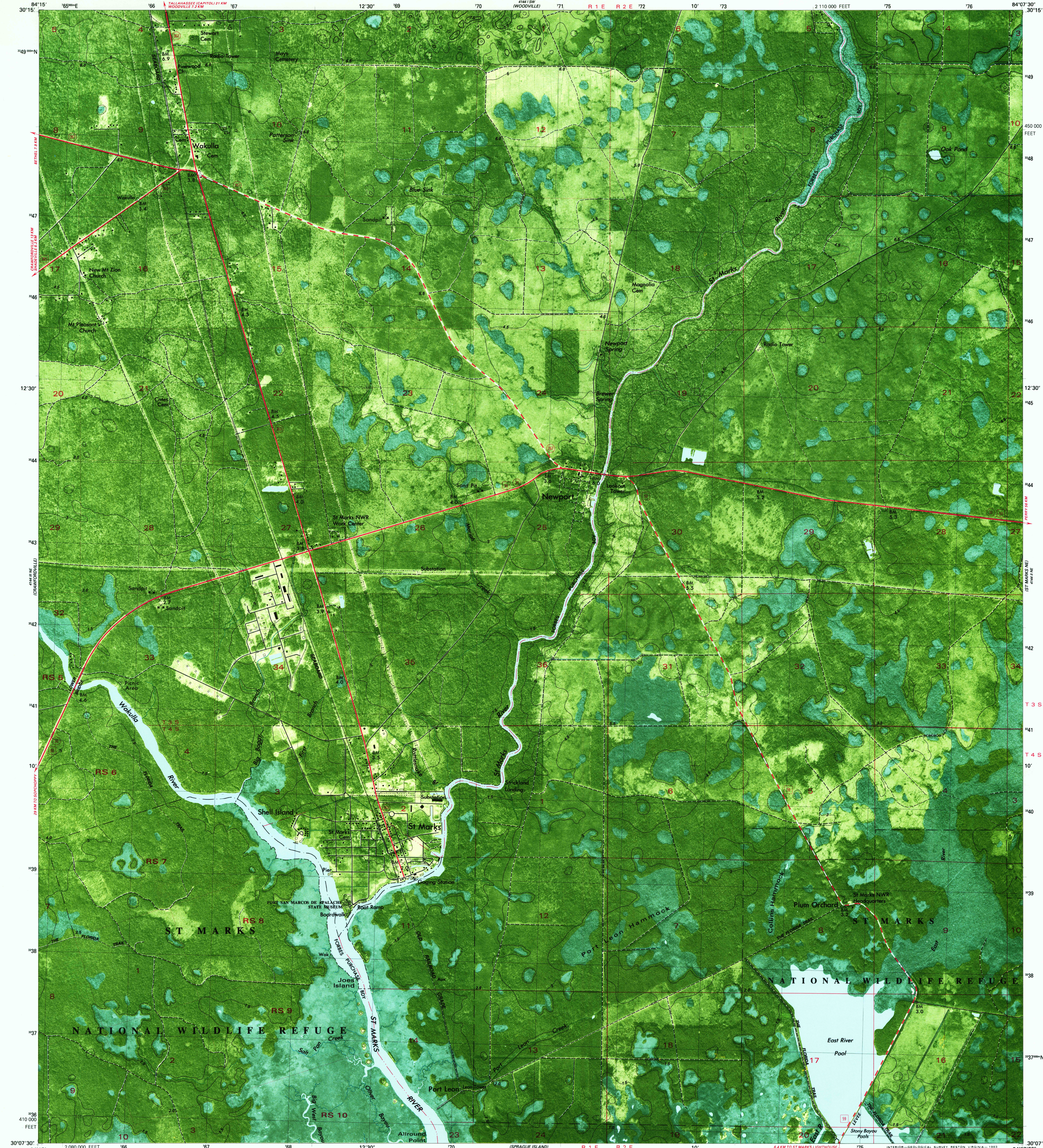


UNITED STATES  
DEPARTMENT OF THE INTERIOR  
GEOLOGICAL SURVEY

STATE OF FLORIDA

ST. MARKS QUADRANGLE  
FLORIDA—WAKULLA CO.  
7.5 MINUTE SERIES ORTHOPHOTOMAP (TOPOGRAPHIC)



Produced by the United States Geological Survey

Control by USGS and NOS/NOAA

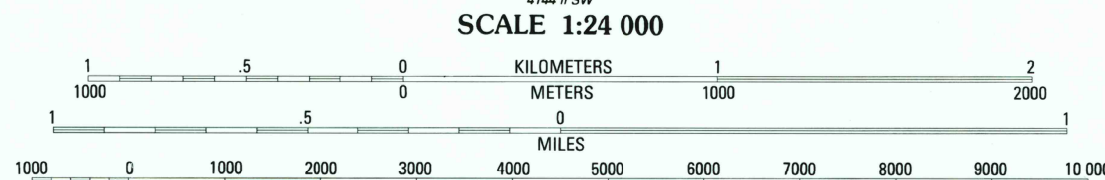
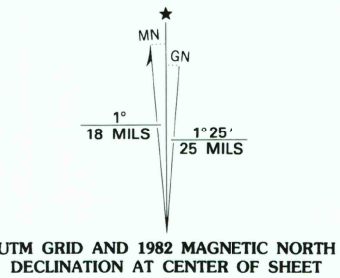
Orthophotomap prepared from aerial photograph taken  
January 9, 1976. Compiled by photogrammetric methods  
from aerial photographs taken March 1978  
Field checked 1981. Map edited 1982  
Supersedes topographic map dated 1954

Projection and 10,000-foot grid ticks: Florida coordinate  
system, north zone (Lambert conformal conic)  
1000-meter Universal Transverse Mercator grid, zone 16  
1927 North American Datum

To place on the predicted North American Datum 1983  
move the projection lines 20 meters south and  
10 meters west as shown by dashed corner ticks

Dotted land lines established by private subdivision  
of the Forbes Purchase

There may be private inholdings within the boundaries of  
the National or State reservations shown on this map



CONTOUR INTERVAL 1.5 METERS  
NATIONAL GEODETIC VERTICAL DATUM OF 1929  
CONTROL ELEVATIONS SHOWN TO THE NEAREST 0.1 METER  
OTHER ELEVATIONS SHOWN TO THE NEAREST 0.5 METER

THIS MAP COMPLIES WITH NATIONAL MAP ACCURACY STANDARDS  
FOR SALE BY U. S. GEOLOGICAL SURVEY, RESTON, VIRGINIA 22092  
A FOLDER DESCRIBING TOPOGRAPHIC MAPS AND SYMBOLS IS AVAILABLE ON REQUEST

ROAD CLASSIFICATION

- Primary highway,  
hard surface
- Secondary highway,  
hard surface
- Trails
- Interstate route
- U. S. Route
- State Route
- County Route
- Light-duty road, hard or  
improved surface
- Unimproved road



QUADRANGLE LOCATION

CONTOURS AND ELEVATIONS  
IN METERS

ST. MARKS, FLA.

30084-B2-OM-024

1982

DMA 4144 II NW—SERIES V8470



APR 10 1982