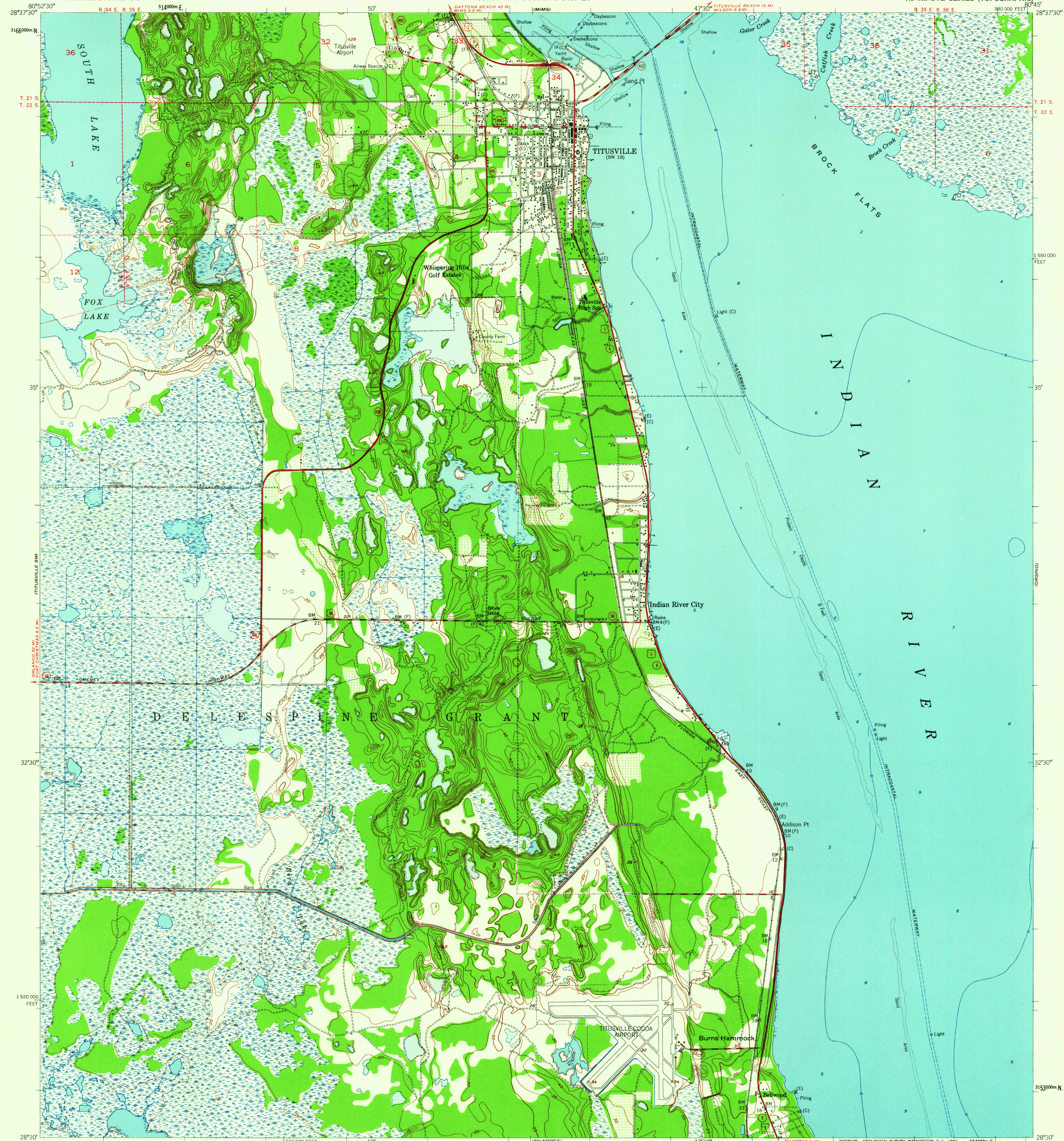


UNITED STATES  
DEPARTMENT OF THE INTERIOR  
GEOLOGICAL SURVEY

UNITED STATES  
DEPARTMENT OF COMMERCE  
COAST AND GEODETIC SURVEY

TITUSVILLE QUADRANGLE  
FLORIDA-BREVARD CO.  
7.5 MINUTE SERIES (TOPOGRAPHIC)



Mapped by the U. S. Coast & Geodetic Survey  
Edited and published by the Geological Survey  
Control by USC&GS(C), USCE (E), and Florida Geodetic Survey(F)  
Culture and drainage in part compiled from  
aerial photographs taken 1948  
Topography by plane-table methods 1948-1949. Field check 1949  
Hydrography from charts surveyed 1875 to 1941  
Polyconic projection. 1927 North American datum  
10,000-foot grid based on Florida coordinate system,  
east zone  
Dashed land lines indicate approximate location  
Land lines within Delephine Grant omitted due to  
insufficient information  
1000-meter Universal Transverse Mercator grid ticks,  
zone 17, shown in blue

TRUE NORTH  
MAGNETIC NORTH  
APPROXIMATE MEAN  
DECLINATION, 1949

SCALE 1:240,000

1000 0 1000 2000 3000 4000 5000 6000 7000 FEET  
1 5 0 1 KILOMETER

CONTOUR INTERVAL 5 FEET

DATUM IS MEAN SEA LEVEL  
DEPTH CURVES AND SOUNDINGS IN FEET—DATUM IS MEAN LOW WATER  
SHORELINE SHOWN REPRESENTS THE APPROXIMATE LINE OF MEAN HIGH WATER  
NO APPRECIABLE PERIODIC TIDES IN THIS AREA

THIS MAP COMPLIES WITH NATIONAL MAP ACCURACY STANDARDS

FOR SALE BY U. S. GEOLOGICAL SURVEY, WASHINGTON 25, D. C.  
A FOLDER DESCRIBING TOPOGRAPHIC MAPS AND SYMBOLS IS AVAILABLE ON REQUEST

ROAD CLASSIFICATION

Heavy-duty ——— Light-duty ———  
Medium-duty ——— Unimproved dirt ———  
U. S. Route State Route

TITUSVILLE, FLA.  
N 2830—W 8045 / 7.5

1949

USGS  
Historical File  
Topography Division  
FILE COPY  
TOPOGRAPHIC ENGINEER

JAN -5 1950  
2540