

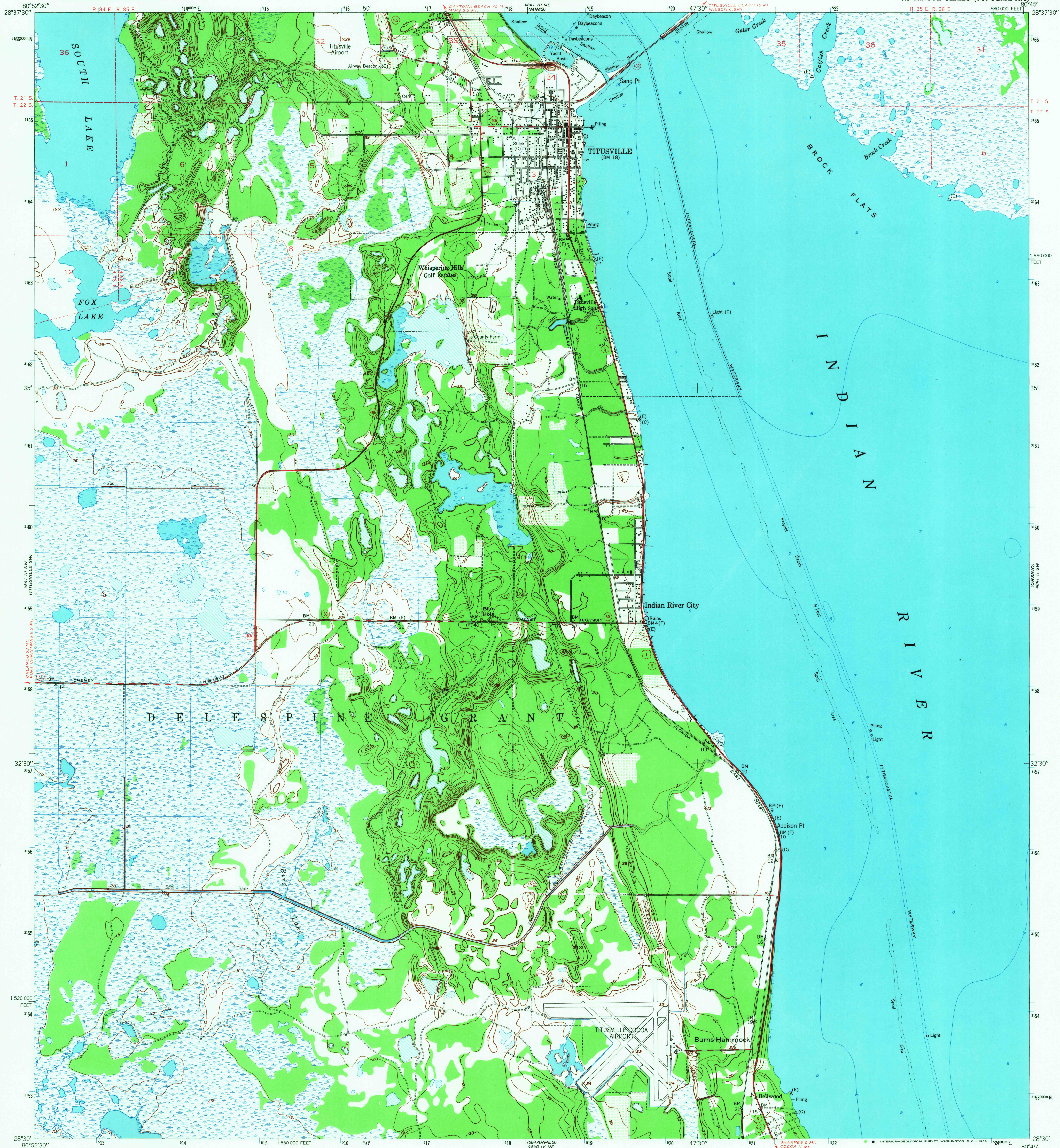
4841 III SE
(AURANT)

UNITED STATES
DEPARTMENT OF THE INTERIOR
GEOLOGICAL SURVEY

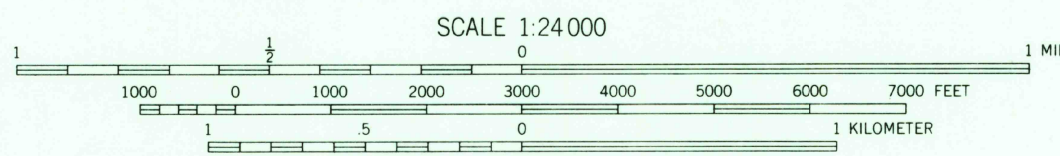
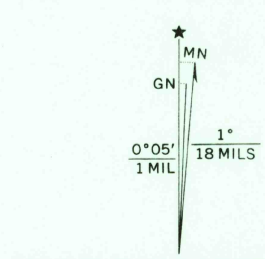
UNITED STATES
DEPARTMENT OF COMMERCE
COAST AND GEODETIC SURVEY

TITUSVILLE QUADRANGLE
FLORIDA-BREVARD CO.
7.5 MINUTE SERIES (TOPOGRAPHIC)

4841 III NW
(WILSON)



Maped by the U. S. Coast & Geodetic Survey
Edited and published by the Geological Survey
Control by USC&GS(C), USCE (E), and Florida Geodetic Survey (F)
Culture and drainage in part compiled from
aerial photographs taken 1948
Topography by plane-table methods 1948-1949. Field check 1949
Hydrography from charts surveyed 1875 to 1941
Polyconic projection. 1927 North American datum
10,000-foot grid based on Florida coordinate system,
east zone
Dashed land lines indicate approximate location
Land lines within Delespine Grant omitted due to
insufficient information
1000-meter Universal Transverse Mercator grid ticks,
zone 17, shown in blue



CONTOUR INTERVAL 5 FEET
DATUM IS MEAN SEA LEVEL
DEPTH CURVES AND SOUNDINGS IN FEET—DATUM IS MEAN LOW WATER
SHORELINE SHOWN REPRESENTS THE APPROXIMATE LINE OF MEAN HIGH WATER
NO APPRECIABLE PERIODIC TIDES IN THIS AREA

THIS MAP COMPLIES WITH NATIONAL MAP ACCURACY STANDARDS
FOR SALE BY U. S. GEOLOGICAL SURVEY, WASHINGTON, D. C. 20242
A FOLDER DESCRIBING TOPOGRAPHIC MAPS AND SYMBOLS IS AVAILABLE ON REQUEST

U.S.G.S.
FILE COPY
TOPOGRAPHIC DIVISION

ROAD CLASSIFICATION
Heavy-duty ——— Light-duty ———
Medium-duty ——— Unimproved dirt ———
U. S. Route ——— State Route ———

USGS
Historical File
Topographic Division

TITUSVILLE, FLA.
N2830-W8045/7.5
1949
AMS 4841 III SE—SERIES V847

3305
MAR 15 1968