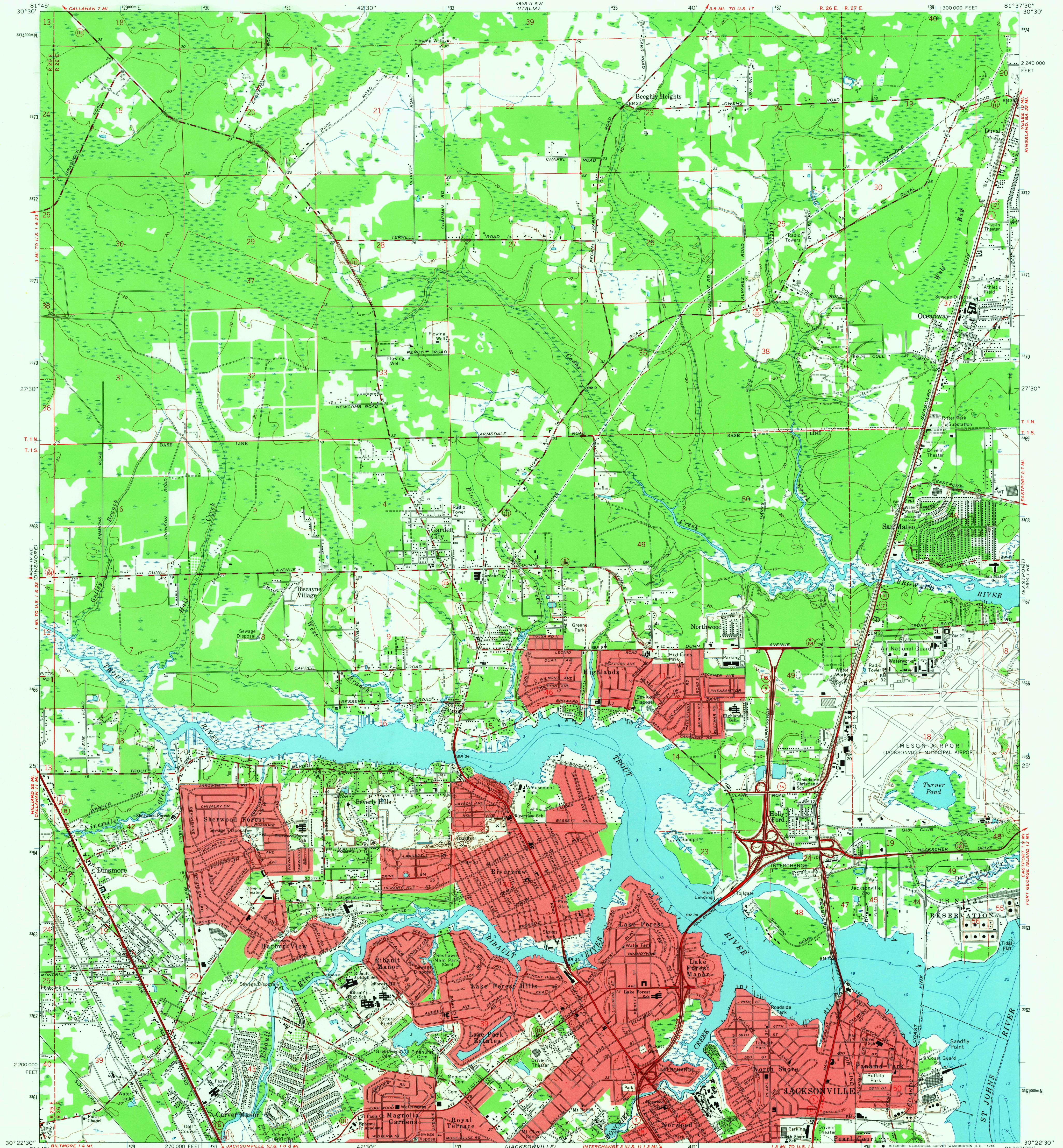


UNITED STATES
DEPARTMENT OF THE INTERIOR
GEOLOGICAL SURVEY

TROUT RIVER QUADRANGLE
FLORIDA-DUVAL CO.
7.5 MINUTE SERIES (TOPOGRAPHIC)
NW 1/4 JACKSONVILLE 15' QUADRANGLE



Maped, edited, and published by the Geological Survey in cooperation with the Department of the Army Control by USGS, USC&GS, and Florida Geodetic Survey
Planimetry in part from USC&GS charts dated 1933
Topography by planetable surveys 1948. Revised from aerial photographs taken 1963. Field checked 1964
Selected hydrographic data compiled from USC&GS Chart 577 (1963)
This information is not intended for navigational purposes
Polyconic projection. 1927 North American datum
10,000-foot grid based on Florida coordinate system, east zone
1000-meter Universal Transverse Mercator grid ticks, zone 17, shown in blue
Fine red dashed lines indicate selected fence and field lines where generally visible on aerial photographs. This information is unchecked
Red tint indicates areas in which only landmark buildings are shown

UTM GRID AND 1964 MAGNETIC NORTH DECLINATION AT CENTER OF SHEET
0°21' 6 MILS

SCALE 1:24,000
CONTOUR INTERVAL 10 FEET
DATUM IS MEAN SEA LEVEL
DEPTH CURVES AND SOUNDINGS IN FEET-DATUM IS MEAN LOW WATER
SHORELINE SHOWN REPRESENTS THE APPROXIMATE LINE OF MEAN HIGH WATER
THE MEAN RANGE OF TIDE IS APPROXIMATELY 1 FOOT

USGS
Historical File
Topographic Division
U.S.G.S.
FILE COPY
TOPOGRAPHIC DIVISION
ROAD CLASSIFICATION
Heavy duty ——— Light duty ———
Medium-duty ——— Unimproved dirt ———
Interstate Route U.S. Route State Route
QUADRANGLE LOCATION
FLORIDA
3715
SEP 7 1965
AMS 4644 1 NW-SERIES V947