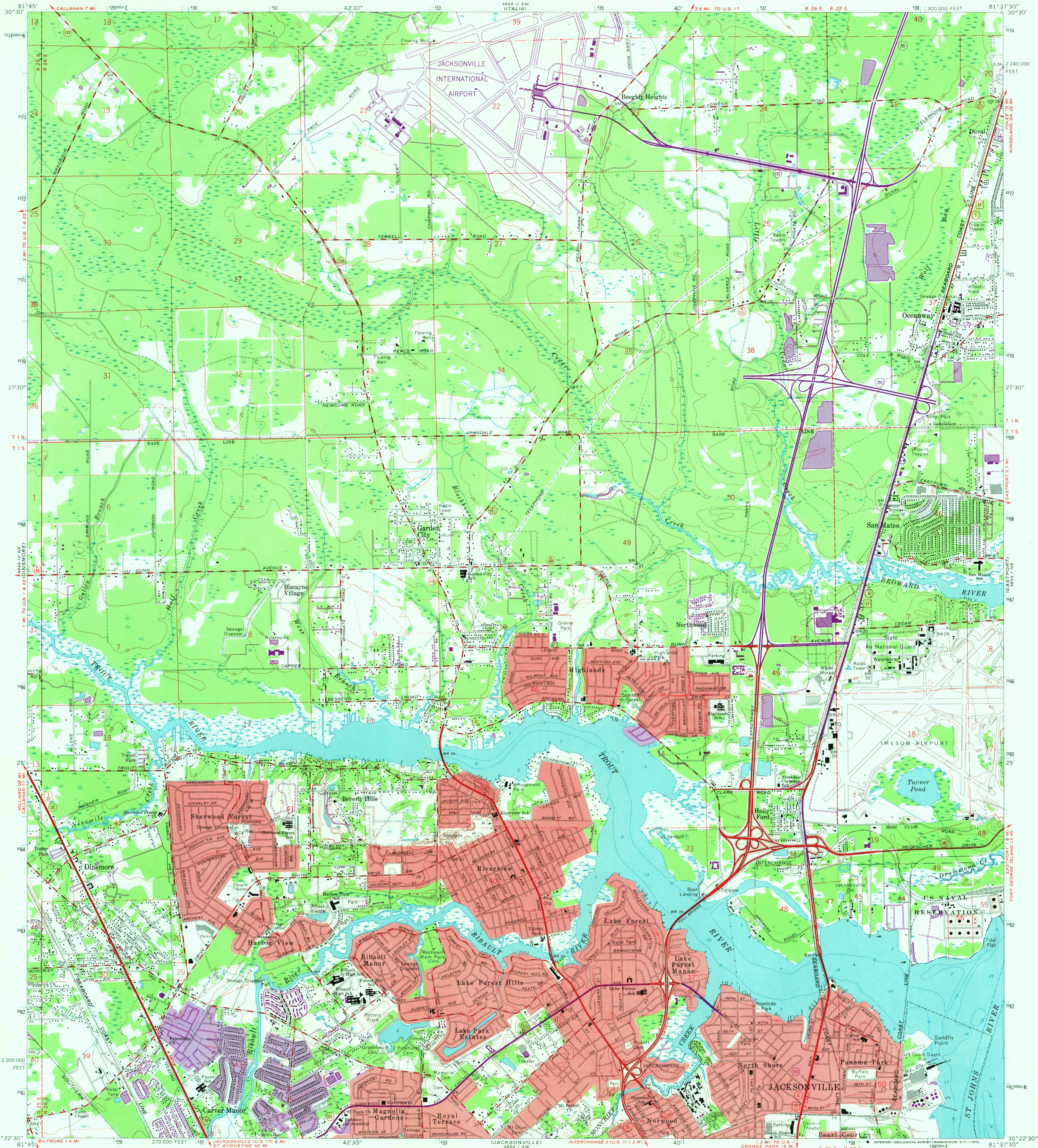


UNITED STATES  
DEPARTMENT OF THE INTERIOR  
GEOLOGICAL SURVEY

TROUT RIVER QUADRANGLE  
FLORIDA—DUVAL CO.  
7.5 MINUTE SERIES (TOPOGRAPHIC)



Maped, edited, and published by the Geological Survey in cooperation with the Department of the Army  
Control by USGS, USC&GS, and Florida Geodetic Survey  
Planimetry in part from USC&GS charts dated 1933  
Topography by planetary surveys 1948. Revised from aerial photographs taken 1963. Field checked 1964  
Selected hydrographic data compiled from USC&GS Chart 577 (1963)  
This information is not intended for navigational purposes  
Polyconic projection. 1927 North American datum  
10,000-foot grid based on Florida coordinate system, east zone  
1000-meter Universal Transverse Mercator grid ticks, zone 17, shown in blue  
Fine red dashed lines indicate selected fence and field lines where generally visible on aerial photographs. This information is unchecked  
Red tint indicates areas in which only landmark buildings are shown

Revisions shown in purple compiled from aerial photographs taken 1970. This information not field checked  
Purple tint indicates extension of urban areas

SCALE 1:24,000  
CONTOUR INTERVAL 10 FEET  
DATUM IS MEAN SEA LEVEL  
DEPTH CURVES AND SOUNDINGS IN FEET—DATUM IS MEAN LOW WATER  
SHORELINE SHOWN REPRESENTS THE APPROXIMATE LINE OF MEAN HIGH WATER  
THE MEAN RANGE OF TIDE IS APPROXIMATELY 1 FOOT  
THIS MAP COMPLIES WITH NATIONAL MAP ACCURACY STANDARDS  
FOR SALE BY U.S. GEOLOGICAL SURVEY, WASHINGTON, D.C. 20242  
A FOLDER DESCRIBING TOPOGRAPHIC MAPS AND SYMBOLS IS AVAILABLE ON REQUEST

ROAD CLASSIFICATION  
Heavy-duty ——— Light-duty ———  
Medium-duty ——— Unimproved dirt ———  
Interstate Route U.S. Route State Route  
QUADRANGLE LOCATION  
TROUT RIVER, FLA.  
N3022.5—W8137.5/7.5  
USGS  
HISTORICAL FILE  
TOPOGRAPHIC DIVISION  
1964  
PHOTOREVISED 1970  
AMS 4644 1 NW—SERIES V847  
AUG 25 1972  
3395