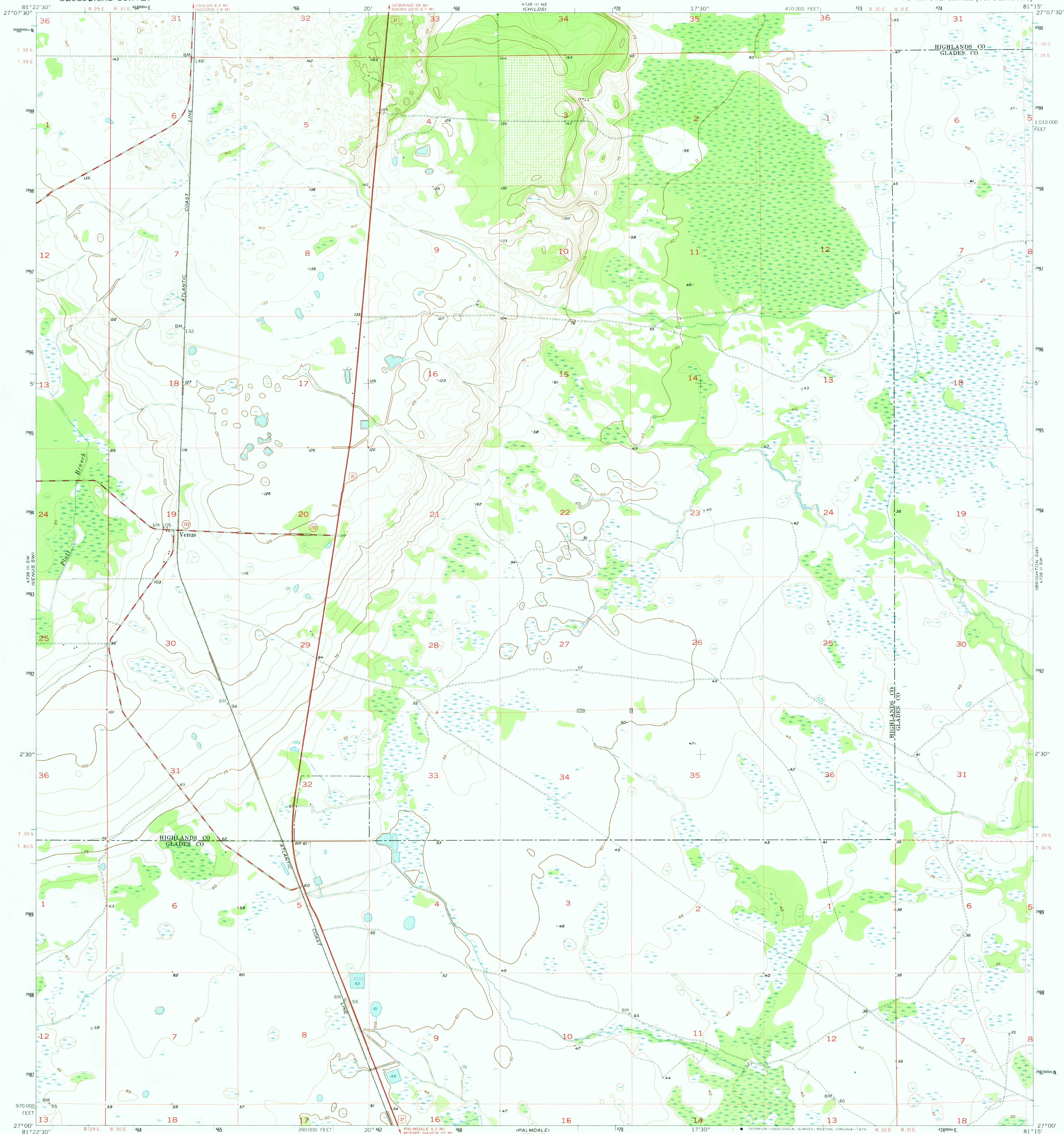
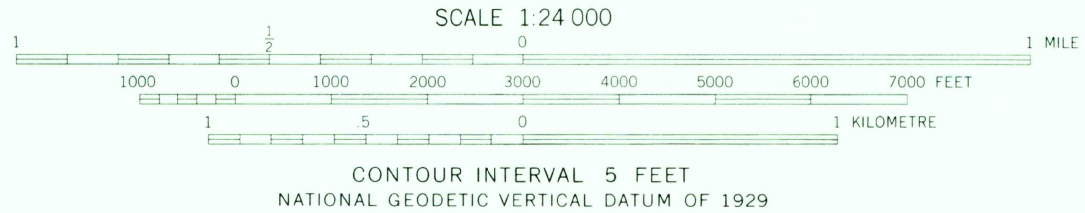
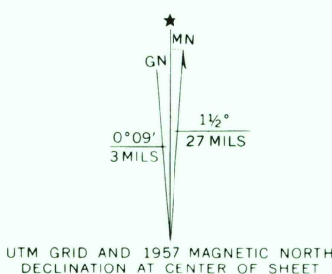


UNITED STATES
DEPARTMENT OF THE INTERIOR
GEOLOGICAL SURVEY

VENUS QUADRANGLE
FLORIDA
7.5 MINUTE SERIES (TOPOGRAPHIC)



Maped, edited, and published by the Geological Survey
Control by USGS, USC&GS, and USCE
Culture and drainage in part compiled from aerial photographs
taken 1952. Topography by planetable surveys 1957
Polyconic projection. 1927 North American datum
10,000-foot grid based on Florida coordinate system, east zone
1000-metre Universal Transverse Mercator grid ticks,
zone 17, shown in blue
Dashed land lines indicate approximate locations
Map photoinspected 1971
No major culture or drainage changes observed



ROAD CLASSIFICATION
Heavy-duty ——— Medium-duty ———
Unimproved dirt - - - - -
U.S. Route ——— State Route ———

USGS
Historical File
Topographic Division

VENUS, FLA.
N2700—W8115/7.5
1957
PHOTOINSPECTED 1971
AMS 4738 III SE—SERIES V847

THIS MAP COMPLIES WITH NATIONAL MAP ACCURACY STANDARDS
FOR SALE BY U.S. GEOLOGICAL SURVEY, RESTON, VIRGINIA 22092
A FOLDER DESCRIBING TOPOGRAPHIC MAPS AND SYMBOLS IS AVAILABLE ON REQUEST

MAR 3 1975

1800