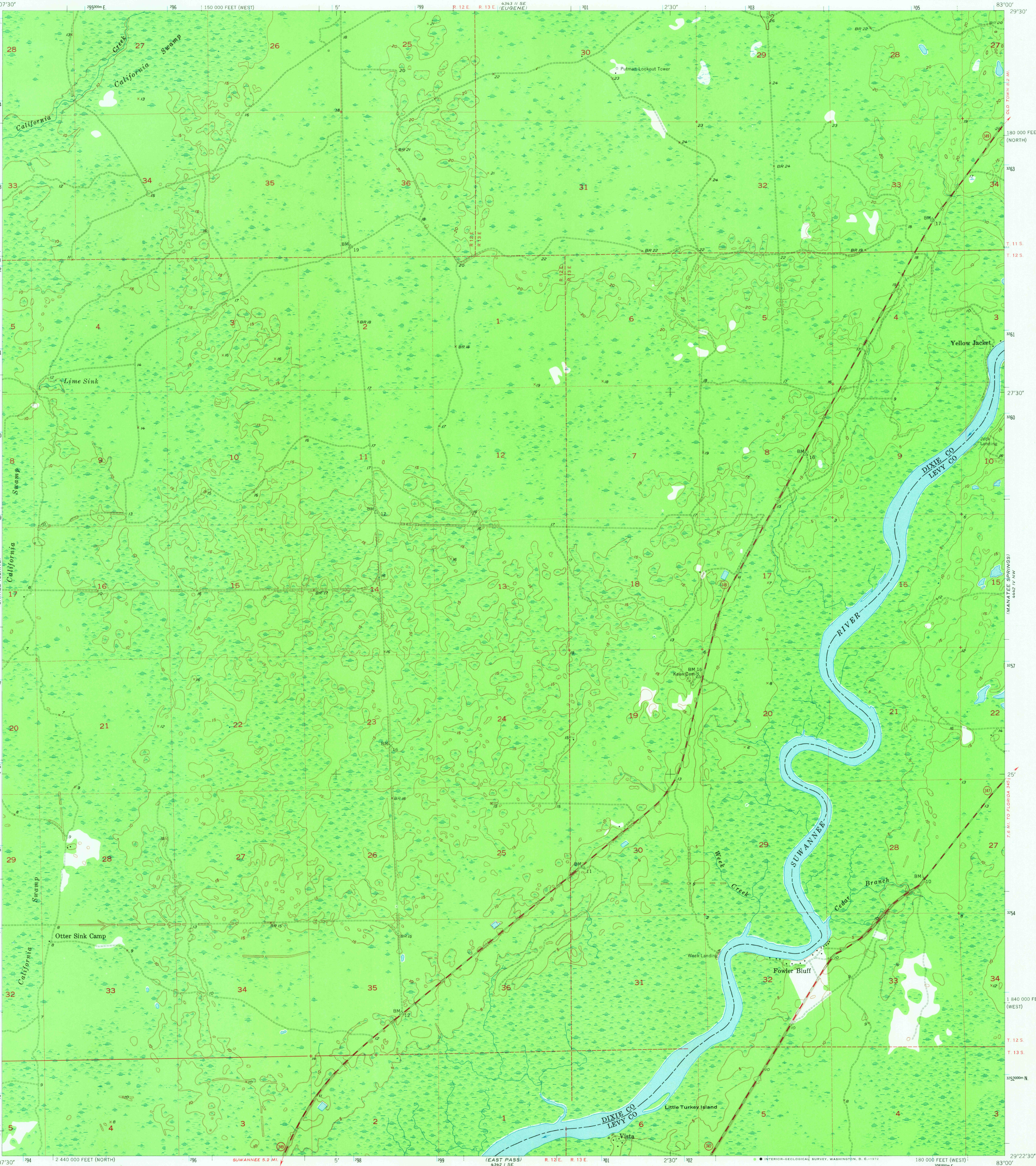


UNITED STATES
DEPARTMENT OF THE INTERIOR
GEOLOGICAL SURVEY

VISTA QUADRANGLE
FLORIDA
7.5 MINUTE SERIES (TOPOGRAPHIC)



Mapped, edited, and published by the Geological Survey
Control by USGS and USC&GS
Culture and drainage in part compiled from aerial photographs
taken 1951. Topography by planetable surveys 1954
Polyconic projection. 1927 North American datum
10,000-foot grids based on Florida coordinate system,
north and west zones
Dashed land lines indicate approximate locations
1000-meter Universal Transverse Mercator grid ticks,
zone 17, shown in blue

UTM GRID AND 1954 MAGNETIC NORTH
DECLINATION AT CENTER OF SHEET

SCALE 1:24,000
1 1000 2000 3000 4000 5000 6000 7000 FEET
1 KILOMETER
CONTOUR INTERVAL 5 FEET
DATUM IS MEAN SEA LEVEL



QUADRANGLE LOCATION

ROAD CLASSIFICATION
Medium-duty ——— Light-duty ———
Unimproved dirt ———
State Route ———

USGS
HISTORICAL FILE
TOPOGRAPHIC DIVISION

VISTA, FLA.
N2922.5-W8300/7.5
1954

AMS 4342 I NE--SERIES V847

SEP 12 1972

1645