

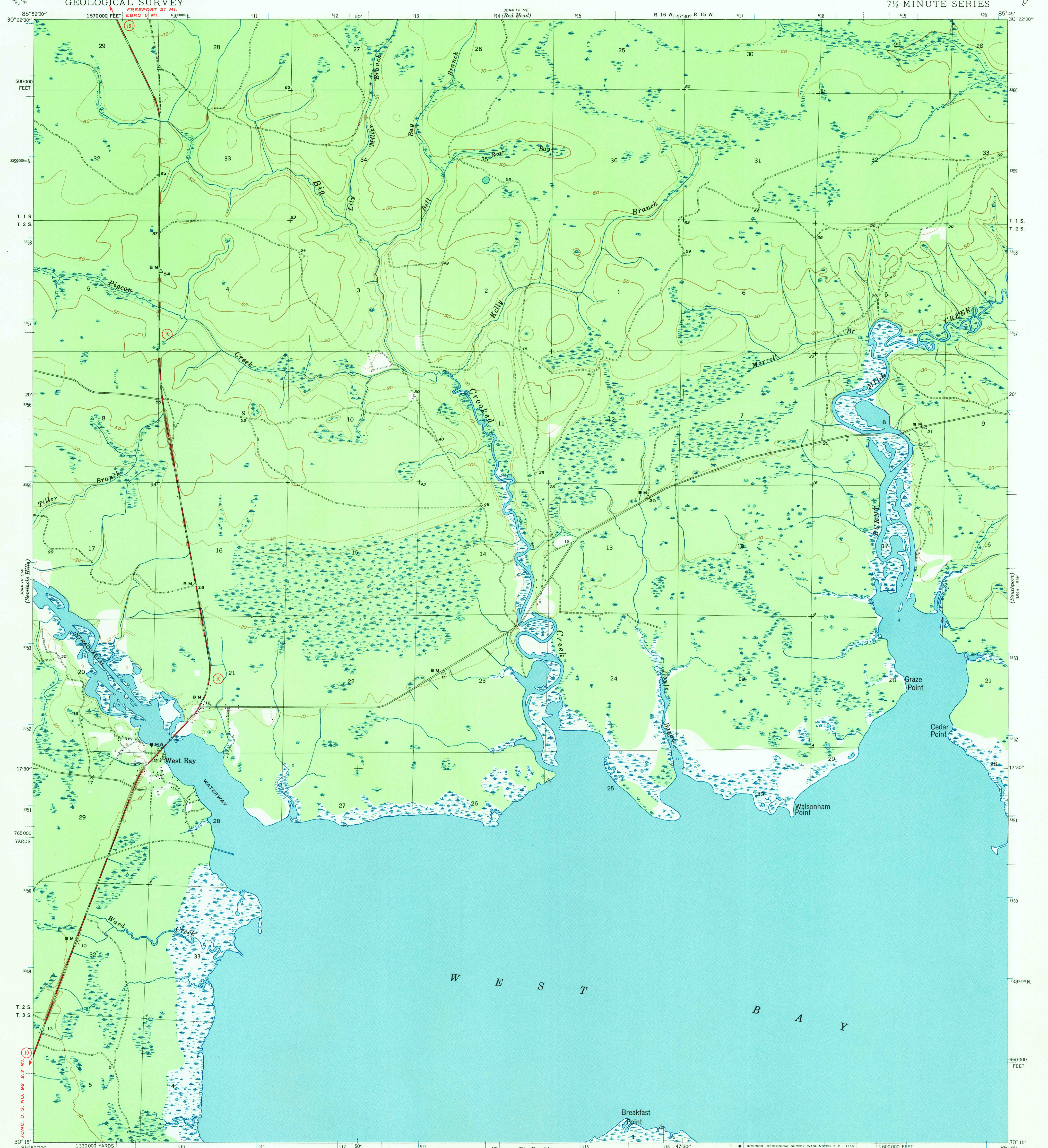
3844 IV NW
(Blue)

UNITED STATES
DEPARTMENT OF THE INTERIOR
GEOLOGICAL SURVEY

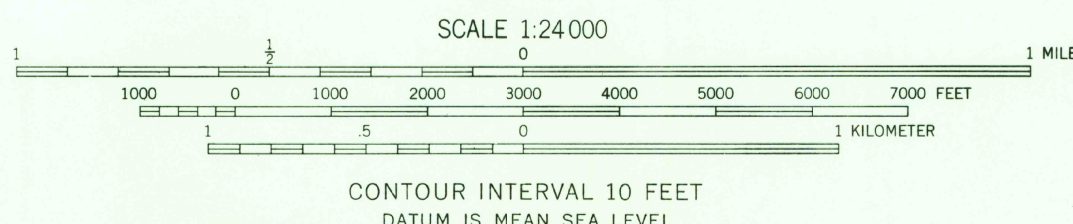
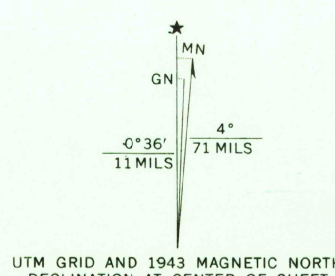
WAR DEPARTMENT
CORPS OF ENGINEERS, U. S. ARMY

FLORIDA
(BAY COUNTY)
WEST BAY QUADRANGLE
7½-MINUTE SERIES

3844 IV NW
(Crystal Lake)



Topography by F. H. Sargent and B. O. Fridge
Control by U. S. C. & G. S., and U. S. G. S.
Surveyed in 1943



ROAD CLASSIFICATION
1943
Dependable hard surface
heavy-duty road
Secondary hard-surface
all-weather road
Dirt road
Loose surface, graded
Unsurfaced, graded
dry-weather roads
U. S. Route (15)
State Route (26)
More than two lanes indicated along road with tick at point of change

1600000 FEET
1600000 E
Polyconic projection, 1927 North American datum
5000 yard grid based on U. S. zone system, C
10000 foot grid based on Florida (North)
rectangular coordinate system.
1000-meter Universal Transverse Mercator grid ticks,
zone 16, shown in blue

WEST BAY, FLA.

N 3015-W 8545/7.5
1943
AMS 3844 IV SE-SERIES V847

FOR SALE BY U. S. GEOLOGICAL SURVEY, WASHINGTON, D. C. 20242
A FOLDER DESCRIBING TOPOGRAPHIC MAPS AND SYMBOLS IS AVAILABLE ON REQUEST

USGS
Historical File
Topographic Division

FILE COPY
TOPOGRAPHIC DIVISION

2795