

UNITED STATES
DEPARTMENT OF THE INTERIOR
GEOLOGICAL SURVEY

WAR DEPARTMENT
CORPS OF ENGINEERS, U. S. ARMY

FLORIDA
(GULF COUNTY)
WETAPPO CREEK QUADRANGLE
7½-MINUTE SERIES

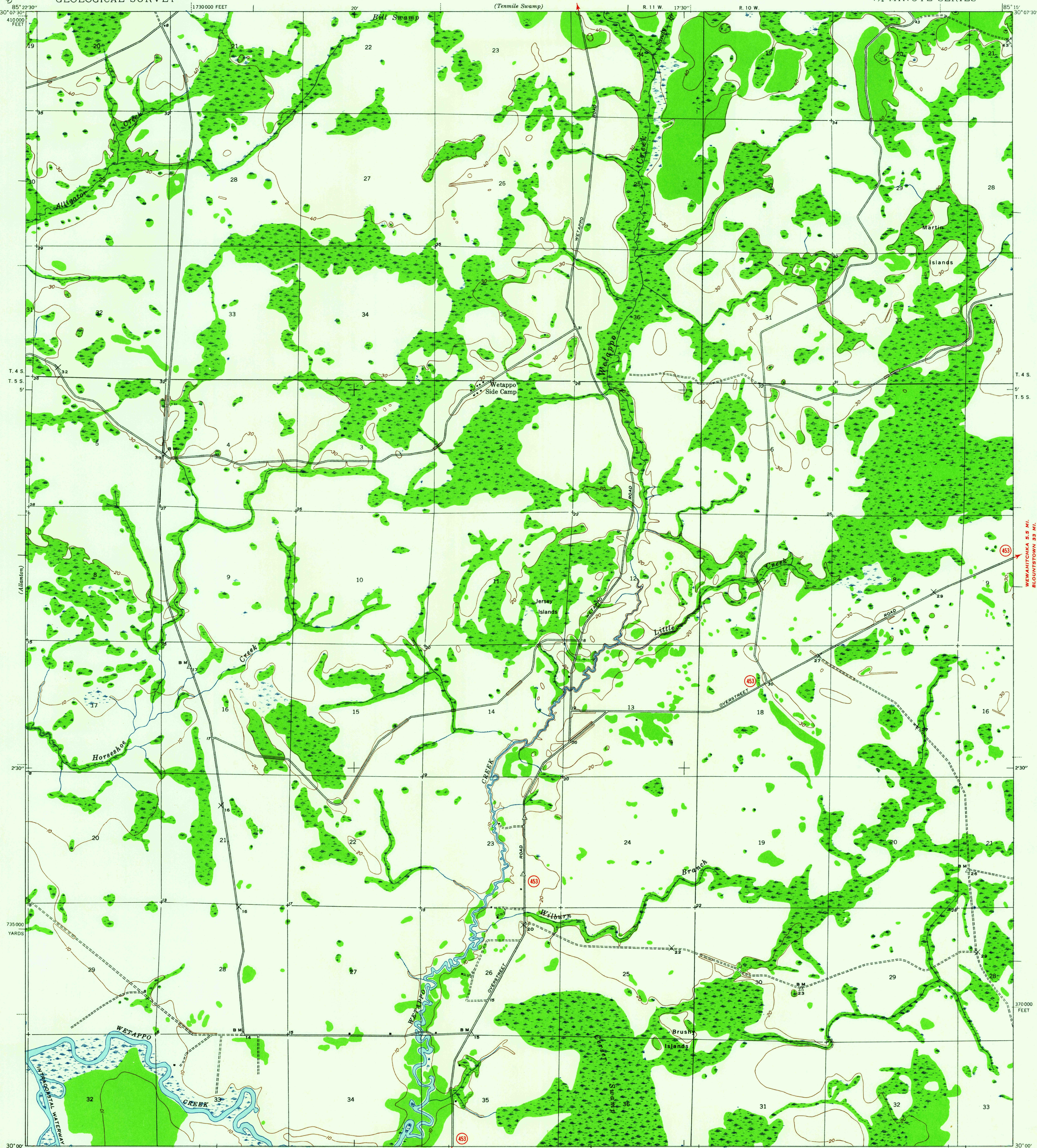
JUNC. STATE NO. 52 1.4 MI.

(Tennile Swamp)

R. 11 W. 17°30'

R. 10 W.

85°15' 30" 07' 30"



Maped by the Geological Survey
1943-1944

TRUE NORTH
MAGNETIC NORTH
APPROXIMATE MEAN
DECLINATION, 1944

SCALE 1:24 000
0 500 1000 1500 2000 2500 3000 3500 4000 4500 5000 5500 6000 6500 7000 Feet
0 1 2 3 4 5 6 7 8 9 10 Kilometers
Contour interval 10 feet
Datum is mean sea level

ROAD CLASSIFICATION
1944
Dependable hard-surface
Heavy-duty road
Secondary hard-surface
all-weather road
Dirt road
Dry weather roads
Loose surface, graded
Unsurfaced, graded
More than two lanes indicated along road with tick at point of change
U. S. Route (15)
State Route (26)
3 LANE 4 LANE

WETAPPO CREEK, FLA.
Edition of 1945
N 3000-W 8515/7.5

USGS
Historical File
Topographic Division

U.S.G.S.
FILE COPY
TOPOGRAPHIC DIVISION

MAY 21 1960

FOR SALE BY U. S. GEOLOGICAL SURVEY, WASHINGTON 25, D. C.
A FOLDER DESCRIBING TOPOGRAPHIC MAPS AND SYMBOLS IS AVAILABLE ON REQUEST

1958