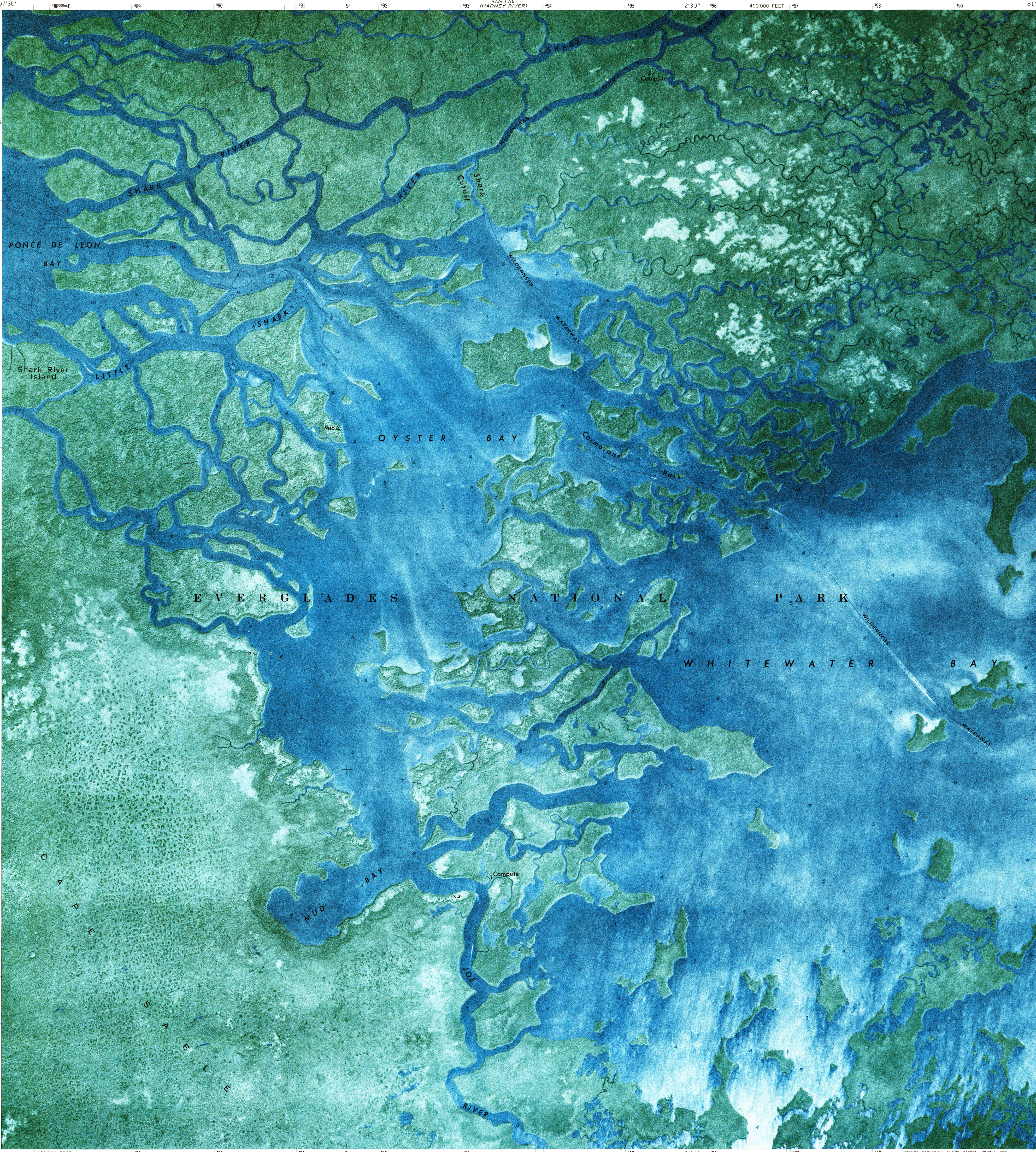
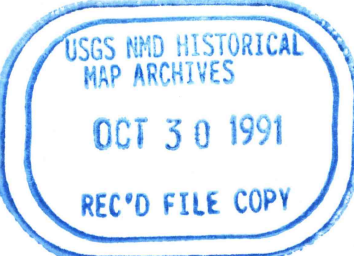
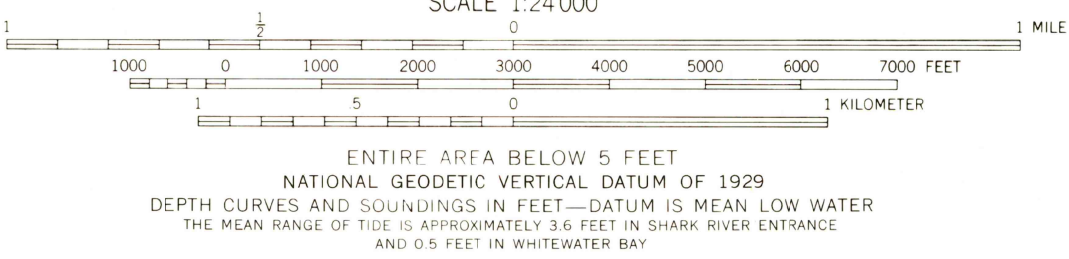
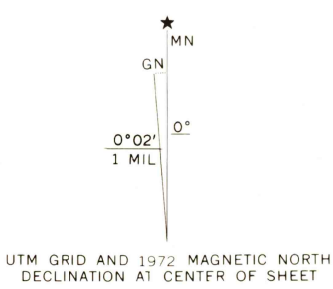


UNITED STATES
DEPARTMENT OF THE INTERIOR
GEOLOGICAL SURVEY

WHITEWATER BAY WEST QUADRANGLE
FLORIDA—MONROE CO.
7.5 MINUTE SERIES ORTHOPHOTOMAP (TOPOGRAPHIC)



Mapped, edited, and published by the Geological Survey
Control by USGS and USC&GS
Orthophotomap prepared from aerial photograph taken January 16, 1971
Field checked 1972
Selected hydrographic data compiled from USC&GS Chart 598 SC (1972)
This information is not intended for navigational purposes
Projection and 10,000-foot grid ticks: Florida coordinate system, east zone (transverse Mercator)
1000-meter Universal Transverse Mercator grid ticks, zone 17, shown in blue. 1927 North American datum
Land lines are omitted because of insufficient data
Map photinspected 1979
No major culture or drainage changes observed



WHITEWATER BAY WEST, FLA.
N2515—W8100/7.5

1972
PHOTOINSPECTED 1979
AMS 4734 I SE—SERIES V8470

THIS MAP COMPLIES WITH NATIONAL MAP ACCURACY STANDARDS
FOR SALE BY U. S. GEOLOGICAL SURVEY
DENVER, COLORADO 80225, OR RESTON, VIRGINIA 22092
A FOLDER DESCRIBING TOPOGRAPHIC MAPS AND SYMBOLS IS AVAILABLE ON REQUEST

ROAD CLASSIFICATION
No roads or trails in this area