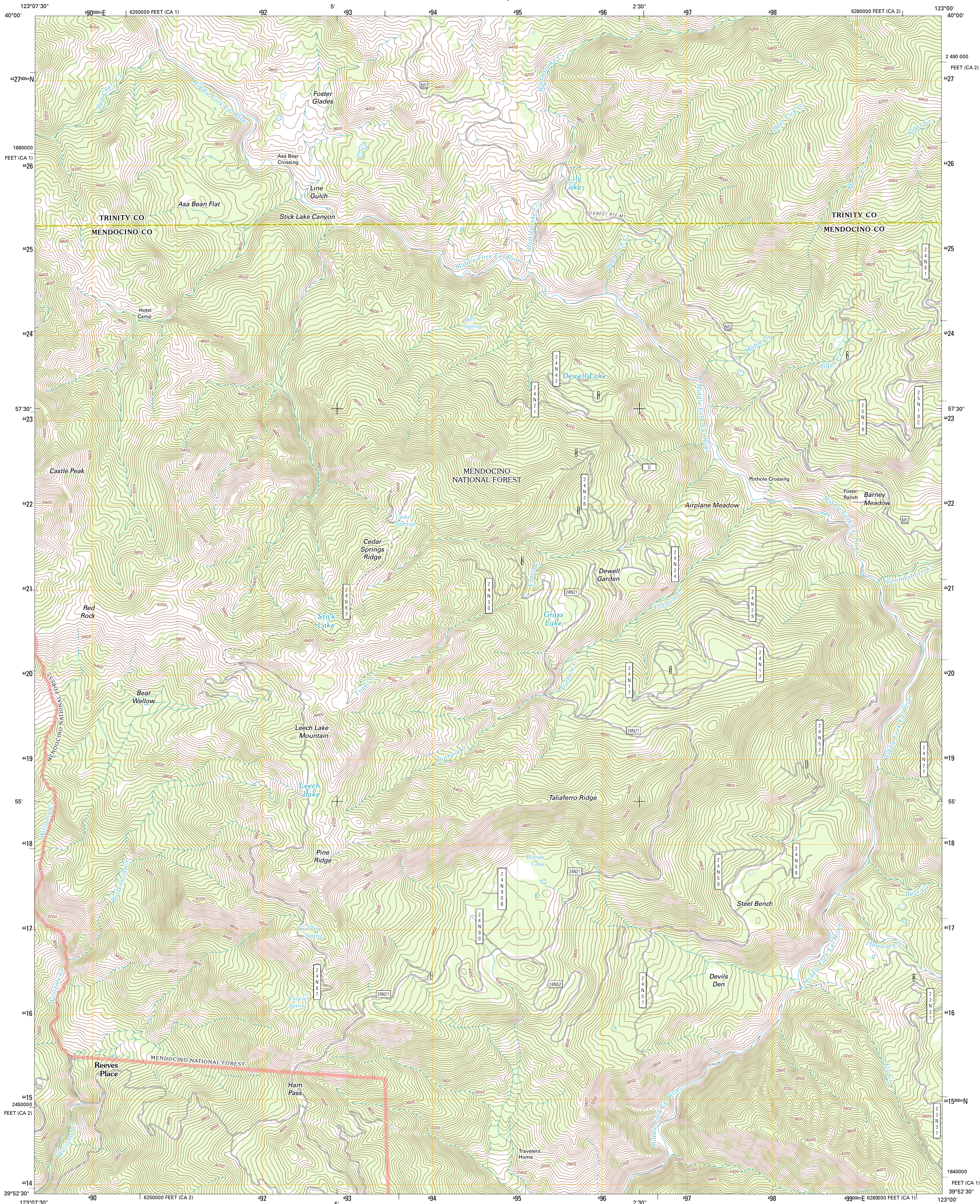




U.S. DEPARTMENT OF THE INTERIOR
U. S. GEOLOGICAL SURVEY

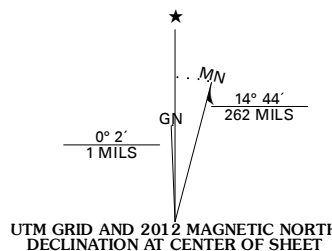


LEECH LAKE MOUNTAIN QUADRANGLE
CALIFORNIA
7.5-MINUTE SERIES

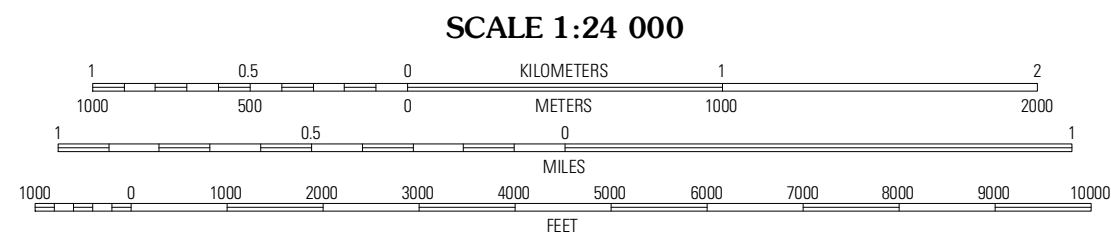


Produced by the United States Geological Survey
North American Datum of 1983 (NAD83)
World Geodetic System of 1984 (WGS84). Projection and
1 000-meter grid: Universal Transverse Mercator, Zone 10S
10 000-foot ticks: California Coordinate System of 1983
(zones 2 and 1)

Imagery.....NAIP, June 2010 - August 2010
Roads.....©2006-2011 TomTom
Roads within US Forest Service Lands.....FS Topo Data
with limited Forest Service updates, 2009
Names.....GNIS, 2011
Hydrography.....National Hydrography Dataset, 2010
Contours.....National Elevation Dataset, 2001
Boundaries.....Census, BWC, IBC, USGS, 1972 - 2010



U.S. National Grid
100,000 m Square ID
DK
Grid Zone Designation
10S



CONTOUR INTERVAL 40 FEET
NORTH AMERICAN VERTICAL DATUM OF 1988
This map was produced to conform with the
National Geospatial Program US Topo Product Standard, 2011.
A metadata file associated with this product is draft version 0.6.1



ADJOINING 7.5' QUADRANGLES		
Four Corners Rock	Wrights Ridge	Solomon Peak
Blaugess Ridge	Leech Lake Mountain	Back Rock
Covelo East	Newhouse Ridge	Mendocino Pass

ROAD CLASSIFICATION

Interstate Route	State Route
US Route	Local Road
Ramp	4WD

Legend for road types:
Interstate Route: Red line with blue shield
US Route: Red line with white shield
Ramp: Red line with blue arrow
State Route: Red line with white shield
Local Road: Red line
4WD: Red line with white arrow
FS Primary Route: Red line with white arrow
FS Passenger Route: Red line with white arrow
FS High Clearance Route: Red line with white arrow

Check with local Forest Service unit
for current travel conditions and restrictions.

LEECH LAKE MOUNTAIN, CA
2012