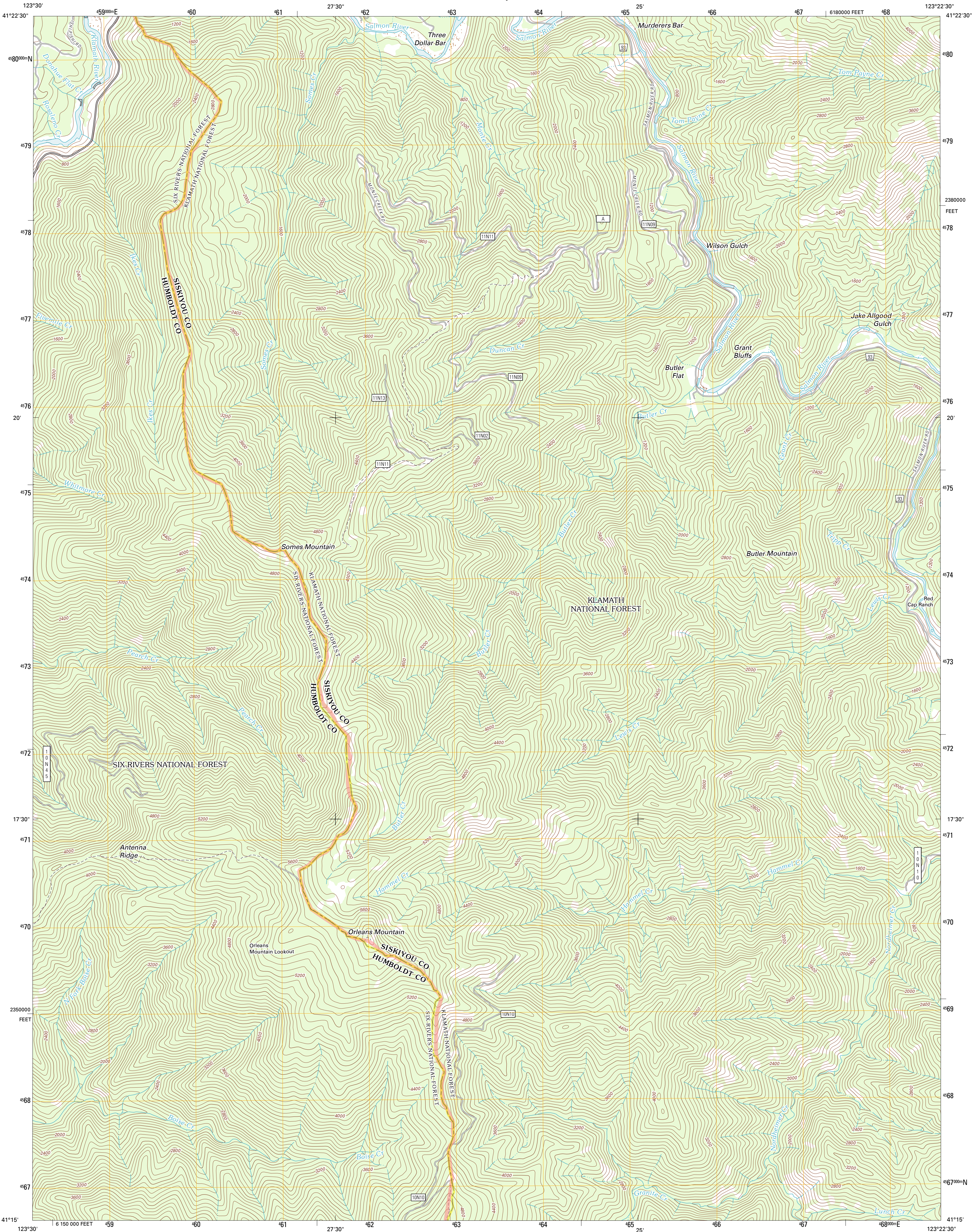




U.S. DEPARTMENT OF THE INTERIOR  
U. S. GEOLOGICAL SURVEY

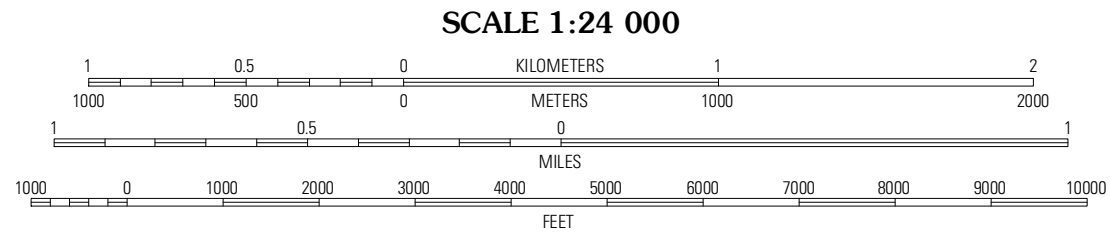
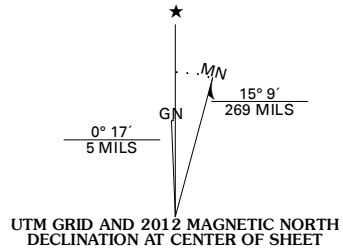


ORLEANS MOUNTAIN QUADRANGLE  
CALIFORNIA  
7.5-MINUTE SERIES

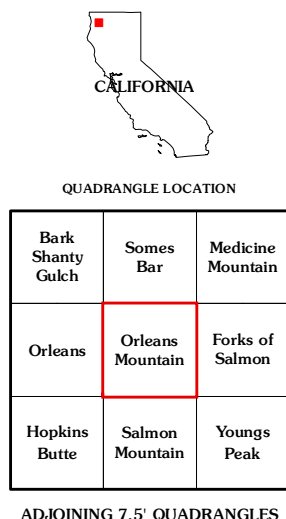


Produced by the United States Geological Survey  
North American Datum of 1983 (NAD83)  
World Geodetic System of 1984 (WGS84). Projection and  
1000-meter grid: Universal Transverse Mercator, Zone 10T  
10 000-foot ticks: California Coordinate System of 1983  
(zone 1)

Imagery.....NAIP, June 2010 - July 2010  
Roads.....©2006-2011 TomTom  
Roads within US Forest Service Lands.....FS Topo Data  
with limited Forest Service updates, 2009  
Names.....GNIS, 2011  
Hydrography.....National Hydrography Dataset, 2010  
Contours.....National Elevation Dataset, 1999  
Boundaries.....Census, IBWC, IBC, USGS, 1972 - 2010



CONTOUR INTERVAL 80 FEET  
NORTH AMERICAN VERTICAL DATUM OF 1988  
This map was produced to conform with the  
National Geospatial Program US Topo Product Standard, 2011.  
A metadata file associated with this product is draft version 0.6.1



**ROAD CLASSIFICATION**  
Interstate Route  
US Route  
Ramp  
State Route  
Local Road  
4WD  
FS Primary Route  
FS Passenger Route  
FS High Clearance Route  
Check with local Forest Service unit  
for current travel conditions and restrictions.

ORLEANS MOUNTAIN, CA  
2012