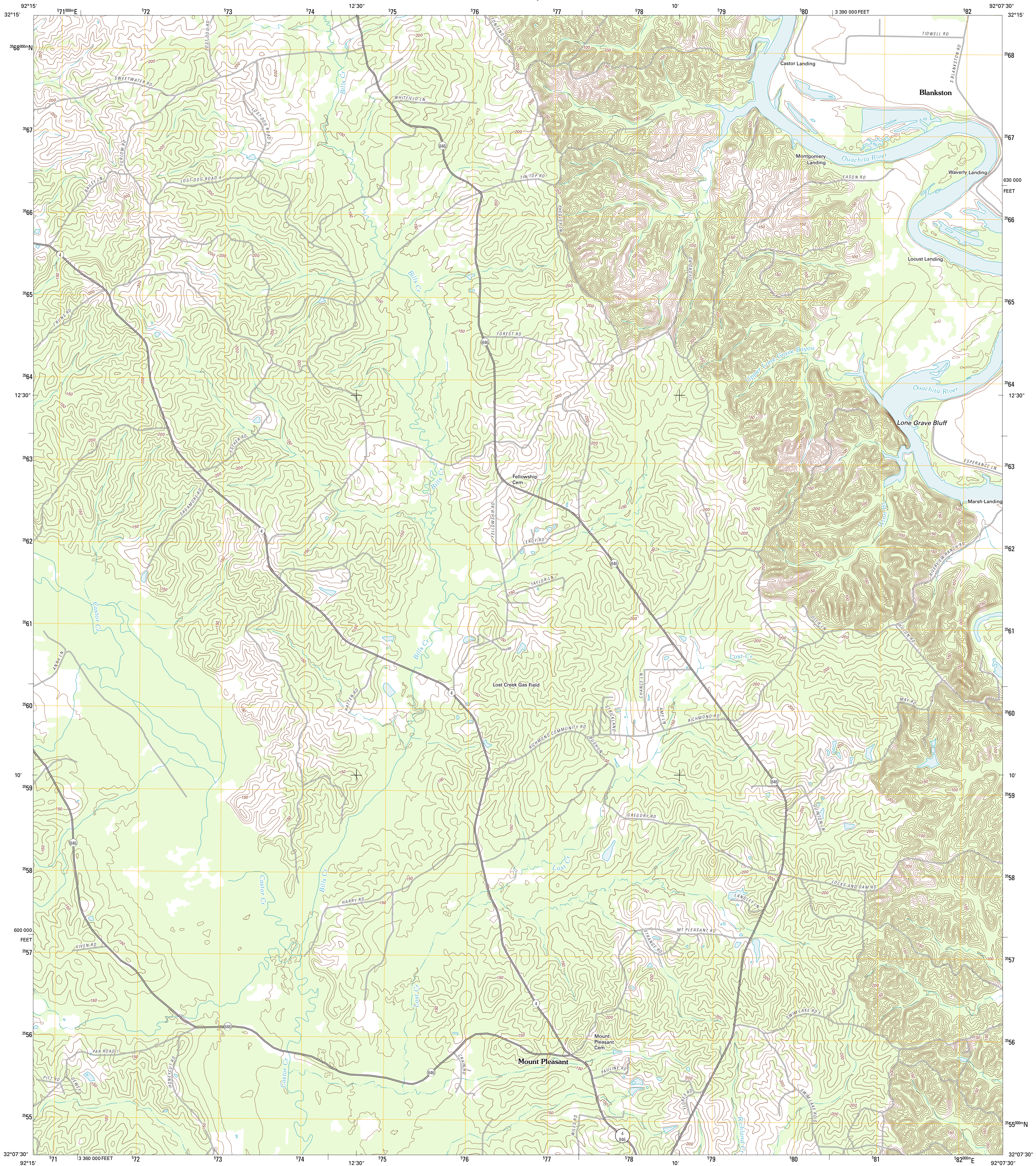




U.S. DEPARTMENT OF THE INTERIOR
U. S. GEOLOGICAL SURVEY



BLANKSTON QUADRANGLE
LOUISIANA-CALDWELL PARISH
7.5-MINUTE SERIES

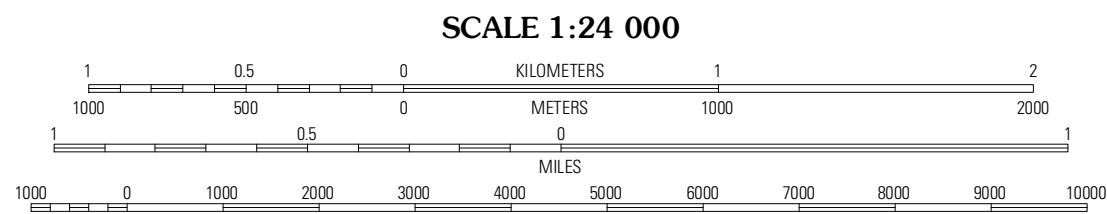


Produced by the United States Geological Survey
North American Datum of 1983 (NAD83)
World Geodetic System of 1984 (WGS84). Projection and
1 000-meter grid; Universal Transverse Mercator, Zone 15S
10 000-foot ticks; Louisiana Coordinate System of 1983
(north zone)

Imagery..... NAD, May 2010
Roads..... ©2006-2011 TomTom
Names..... GNIS, 2011
Hydrography..... National Hydrography Dataset, 2010
Contours..... National Elevation Dataset, 2011
Boundaries..... Census, IBWC, IBC, USGS, 1972 - 2010

UTM GRID AND 2012 MAGNETIC NORTH
DECLINATION AT CENTER OF SHEET

U.S. National Grid 100,000-m Square ID
WR
Grid Zone Designation 15S



CONTOUR INTERVAL 10 FEET
NORTH AMERICAN VERTICAL DATUM OF 1988
This map was produced to conform with the
National Geospatial Program US Topo Product Standard, 2011.
A metadata file associated with this product is draft version 0.6.1



Chatham SE	Luna	Bosco
Viven	Blankston	Riverson
Cotton Plant	Clark	Columbia

ADJOINING 7.5' QUADRANGLES

ROAD CLASSIFICATION
Interstate Route
US Route
Ramp
State Route
Local Road
4WD

BLANKSTON, LA
2012