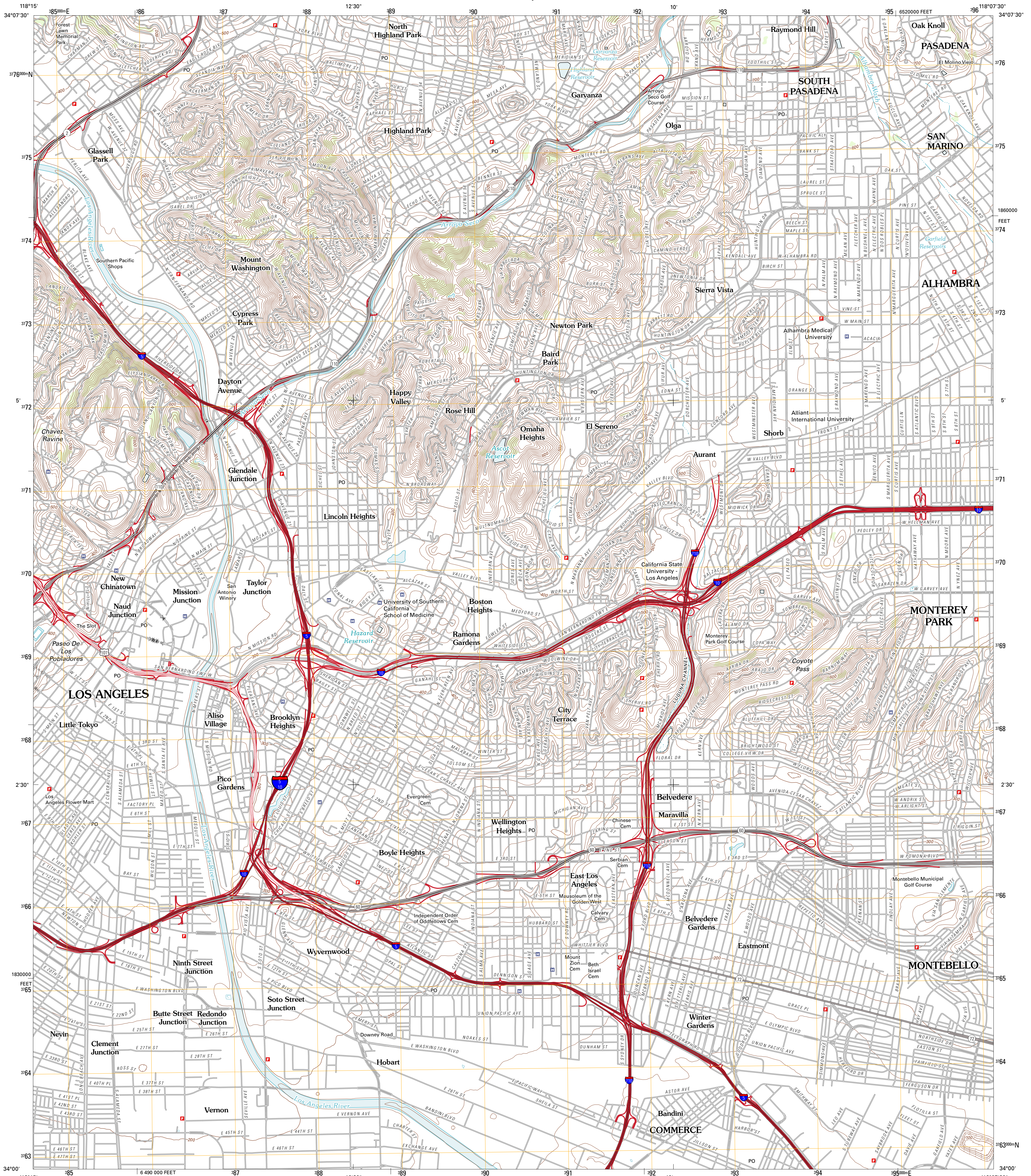




U.S. DEPARTMENT OF THE INTERIOR  
U. S. GEOLOGICAL SURVEY

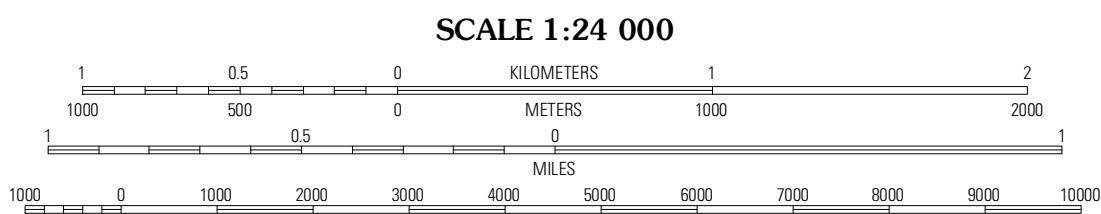
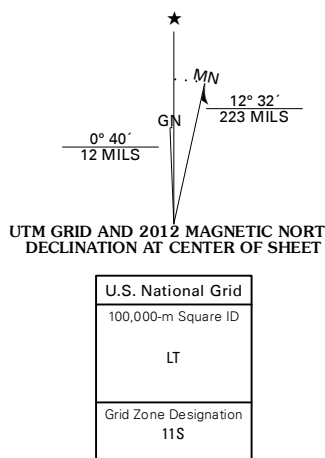


LOS ANGELES QUADRANGLE  
CALIFORNIA-LOS ANGELES CO.  
7.5-MINUTE SERIES



Produced by the United States Geological Survey  
North American Datum of 1983 (NAD83)  
World Geodetic System of 1984 (WGS84) Projection and  
1 000-foot ticks: California Coordinate System of 1983  
(zone 5)

Imagery: N/AIP, April 2010  
Roads: ©2006-2011 TomTom  
Names: GNIS, 2011  
Hydrography: National Hydrography Dataset, 2010  
Contours: National Elevation Dataset, 1999  
Boundaries: Census, IBWC, IBC, USGS, 1972-2010

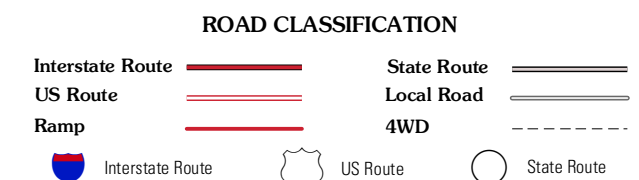


CONTOUR INTERVAL 20 FEET  
NORTH AMERICAN VERTICAL DATUM OF 1988  
This map was produced to conform with the  
National Geospatial Program US Topo Product Standard, 2011.  
A metadata file associated with this product is draft version 0.6.1



QUADRANGLE LOCATION		
Burbank	Pasadena	Mount Wilson
Hollywood	Los Angeles	El Monte
Inglewood	South Gate	Whittier

ADJOINING 7.5' QUADRANGLES



LOS ANGELES, CA  
2012