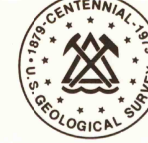


666 14 SE
605450
605450

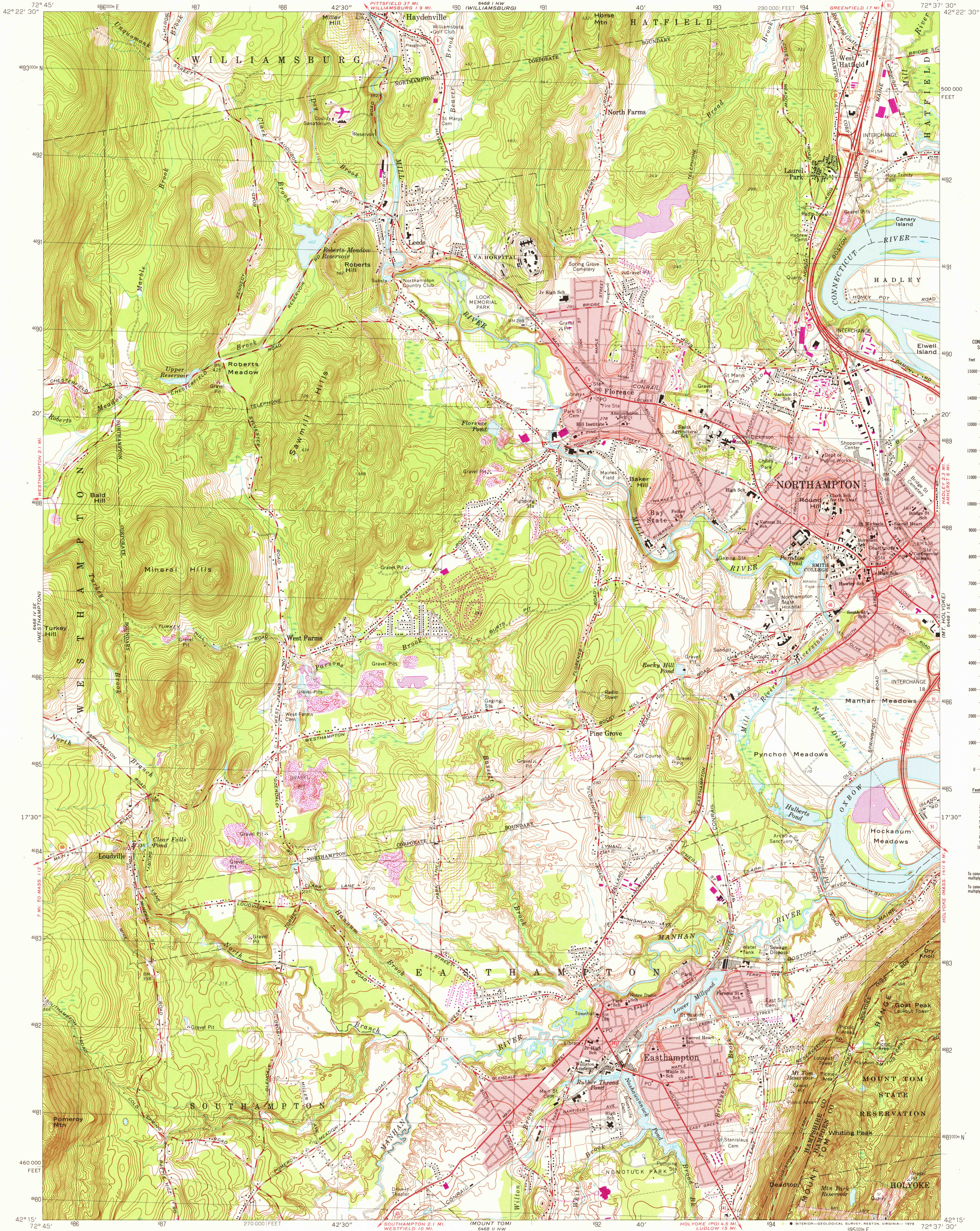
UNITED STATES
DEPARTMENT OF THE INTERIOR
GEOLOGICAL SURVEY



COMMONWEALTH OF MASSACHUSETTS
DEPARTMENT OF PUBLIC WORKS

EASTHAMPTON QUADRANGLE
MASSACHUSETTS
7.5 MINUTE SERIES (TOPOGRAPHIC)

666 14 SE
605450
605450



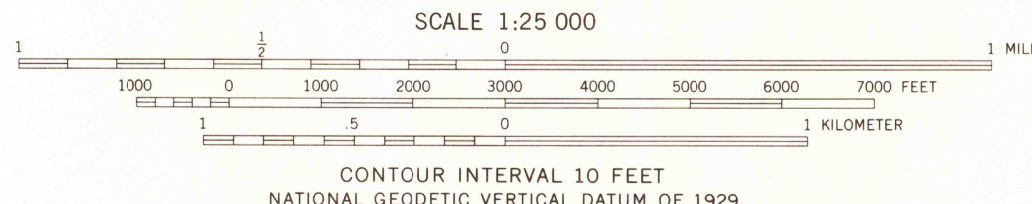
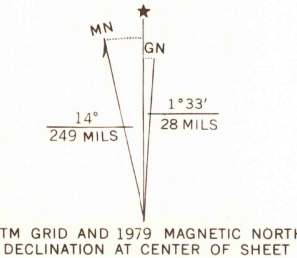
CONVERSION
SCALES

Feet	Meters
15000	4500
14000	4000
13000	3500
12000	3000
11000	2500
10000	2000
9000	1500
8000	1000
7000	500
6000	200
5000	100
4000	50
3000	25
2000	10
1000	5
500	2.5
200	1
100	0.5
0	0

To convert feet to meters
multiply by 0.3048

To convert meters to feet
multiply by 3.2808

Mapped, edited, and published by the Geological Survey
Control by USGS, USC&GS, and Massachusetts Geodetic Survey
Topography by planetable surveys 1935. Revised 1964
Polyconic projection. 1927 North American datum
10,000-foot grid based on Massachusetts coordinate system, mainland zone
1000-meter Universal Transverse Mercator grid, zone 18
Red tint indicates areas in which only landmark buildings are shown
There may be private inholdings within the boundaries of
the National or State reservations shown on this map
Revisions shown in purple compiled in cooperation with the State of
Massachusetts agencies from aerial photographs taken 1975 and other
source data. This information not field checked. Map edited 1979



THIS MAP COMPLIES WITH NATIONAL MAP ACCURACY STANDARDS
FOR SALE BY U.S. GEOLOGICAL SURVEY, RESTON, VIRGINIA 22092
A FOLDER DESCRIBING TOPOGRAPHIC MAPS AND SYMBOLS IS AVAILABLE ON REQUEST



ROAD CLASSIFICATION

Heavy-duty	Light-duty
Medium-duty	Unimproved dirt
Interstate Route	U.S. Route
	State Route

EASTHAMPTON, MASS.
N4215-W7237.5/7.5
1964
PHOTOREVISED 1979
AMS 6468 I SW-SERIES V814

USGS
Historical File
Topographic Division

AUG 3 1979

3900