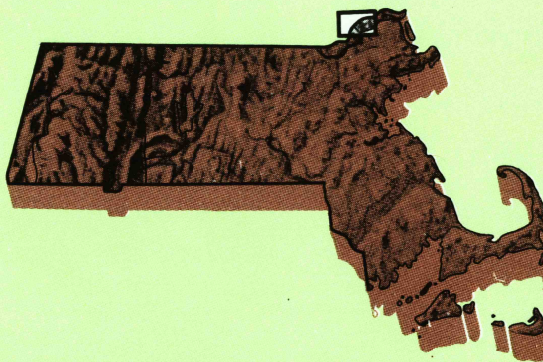


# Haverhill

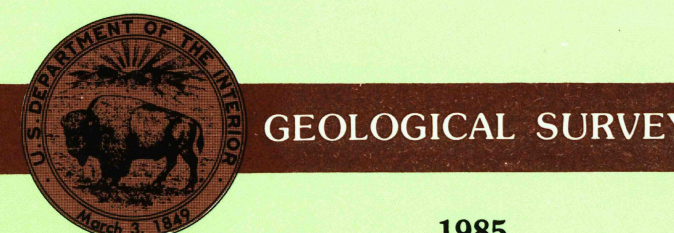
## MASSACHUSETTS NEW HAMPSHIRE

1:25 000-scale metric  
topographic map



7.5 X 15 MINUTE QUADRANGLE  
SHOWING

- Contours and elevations  
in meters
- Highways, roads and other  
manmade structures
- Water features
- Woodland areas
- Geographic names



Produced by the United States Geological Survey  
in cooperation with Massachusetts Department  
of Public Works

Control by USGS, NOS/NOAA, Commonwealth of Massachusetts  
agencies, and State of New Hampshire agencies

Compiled by photogrammetric methods from aerial photographs  
taken 1978. Field checked 1979. Map edited 1985

This area also covered by 7.5 minute, 1:24,000-scale maps:  
Salem Depot and Haverhill dated 1968 and 1972

Selected hydrographic data compiled from NOS chart 13274 (1982)

This information is not intended for navigational purposes

Projection and 100-meter grid: Universal  
Transverse Mercator, zone 19  
10,000-foot grid ticks based on New Hampshire coordinate system,  
and Massachusetts coordinate system, mainland zone  
1927 North American Datum

To place on the predicted North American Datum 1983  
move the projection lines 6 meters south and  
41 meters west as shown by dashed corner ticks

There may be private holdings within the boundaries of  
the National or State reservations shown on this map

CONTOUR INTERVAL 3 METERS  
NATIONAL GEODETIC VERTICAL DATUM OF 1929  
CONTROL ELEVATIONS SHOWN TO THE NEAREST 0.1 METER  
OTHER ELEVATIONS SHOWN TO THE NEAREST 0.5 METER  
SOUNDINGS IN METERS

DATUM IS MEAN LOW WATER

THE RELATIONSHIP BETWEEN THE TWO DATUMS IS VARIABLE  
SHORELINE SHOWN REPRESENTS THE APPROXIMATE LINE  
OF MEAN HIGH WATER

THE MEAN RANGE OF TIDE IS APPROXIMATELY 2.4 METERS

THIS MAP COMPLIES WITH NATIONAL MAP ACCURACY STANDARDS

CONVERSION TABLE

Meters	Feet
1	3.2808
2	6.5617
3	9.8425
4	13.1234
5	16.4042
6	19.6850
7	22.9659
8	26.2467
9	29.5276
10	32.8084

To convert meters to feet  
multiply by 3.2808

To convert feet to meters  
multiply by 0.3048

DECLINATION DIAGRAM

ADJOINING MAPS

1	2	3
1	2	3
4	5	6
7	8	9

1 Derry (7.5)  
2a Sandown (7.5)  
2b Sandown (7.5)  
3 Exeter  
4 Windham (7.5)  
5 Newburyport  
6 Lowell  
7 Lawrence  
8 Ipswich

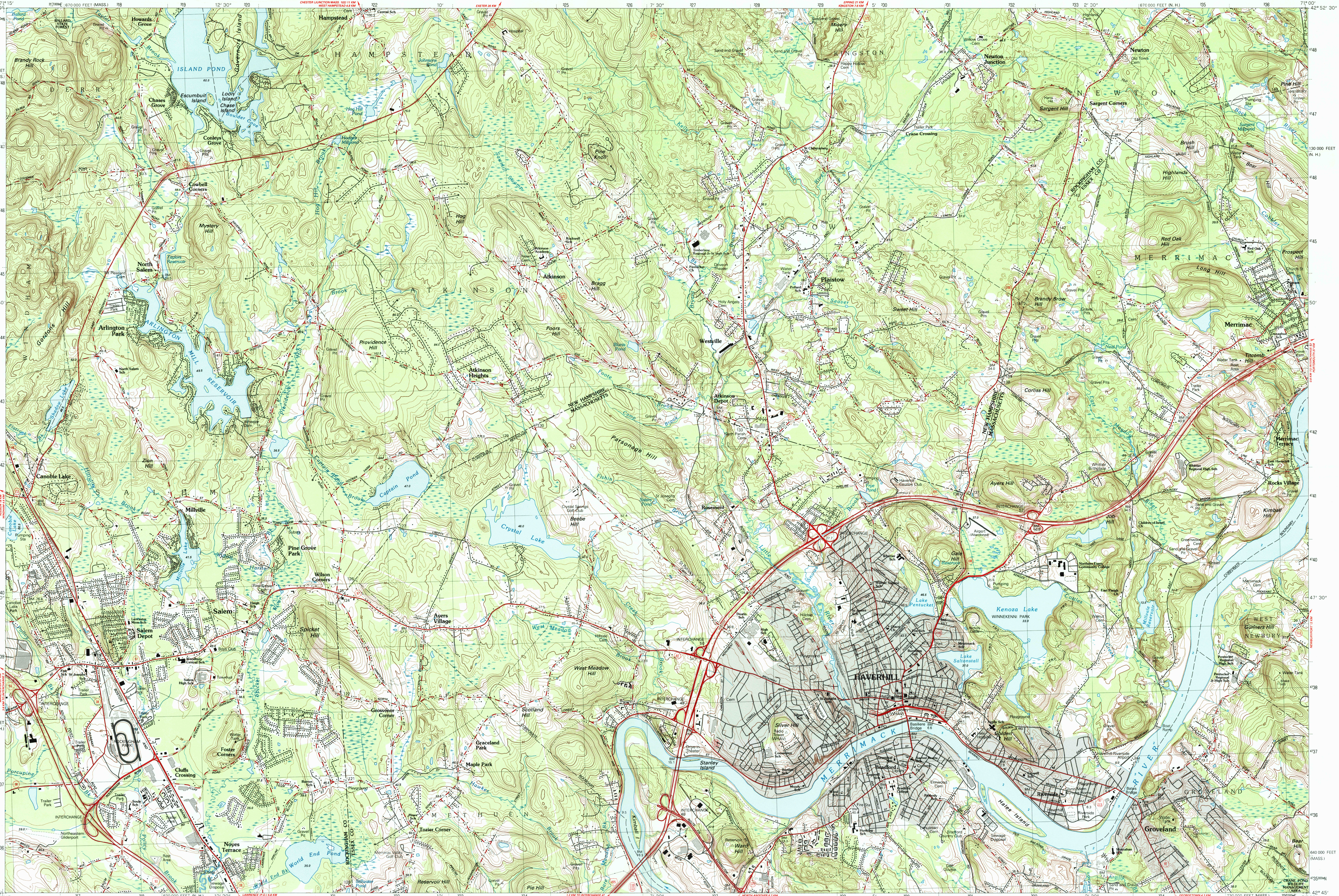
FOR SALE BY U.S. GEOLOGICAL SURVEY  
RESTON, VIRGINIA 22092

### Topographic Map Symbols

- Primary highway, hard surface
- Secondary highway, hard surface
- Light-duty road, hard or improved surface
- Unimproved road; trail
- Railroad: Interstate; U. S.; State
- Railroad: standard gauge; narrow gauge
- Bridge: drawbridge
- Footbridge; overpass; underpass
- Built-up area: only selected landmark buildings shown
- House; barn; church; school; large structure
- Boundary
- National, with monument
- State
- County, parish
- Civil township, precinct, district
- Incorporated city, village, town
- National or State reservation; small park
- Land grant with monument; found section corner
- U. S. public lands survey: range, township, section
- Range, township; section line; location approximate
- Fence or field line
- Power transmission line, located tower
- Dam, dam with lock
- Cemetery; grave
- Campground; picnic area; U. S. location monument
- Windmill; water well; spring
- Mine shaft; prospect; adit or ore
- Control: horizontal station; vertical station; spot elevation
- Contours: index; intermediate; supplementary; depression
- Distorted surface: strip mine, lava, sand
- Bathymetric contours: index; intermediate
- Perennial lake and stream; intermittent lake and stream
- Rapids, large and small; falls, large and small
- Submerged marsh; marsh, swamp
- Land subject to controlled inundation; woodland
- Scrub; mangrove
- Orchard; vineyard

A pamphlet describing topographic maps is available on request

### HAVERHILL, MASSACHUSETTS - NEW HAMPSHIRE



USGS NMID HISTORICAL MAP  
SEP 29 1986  
REC'D FILE COPY