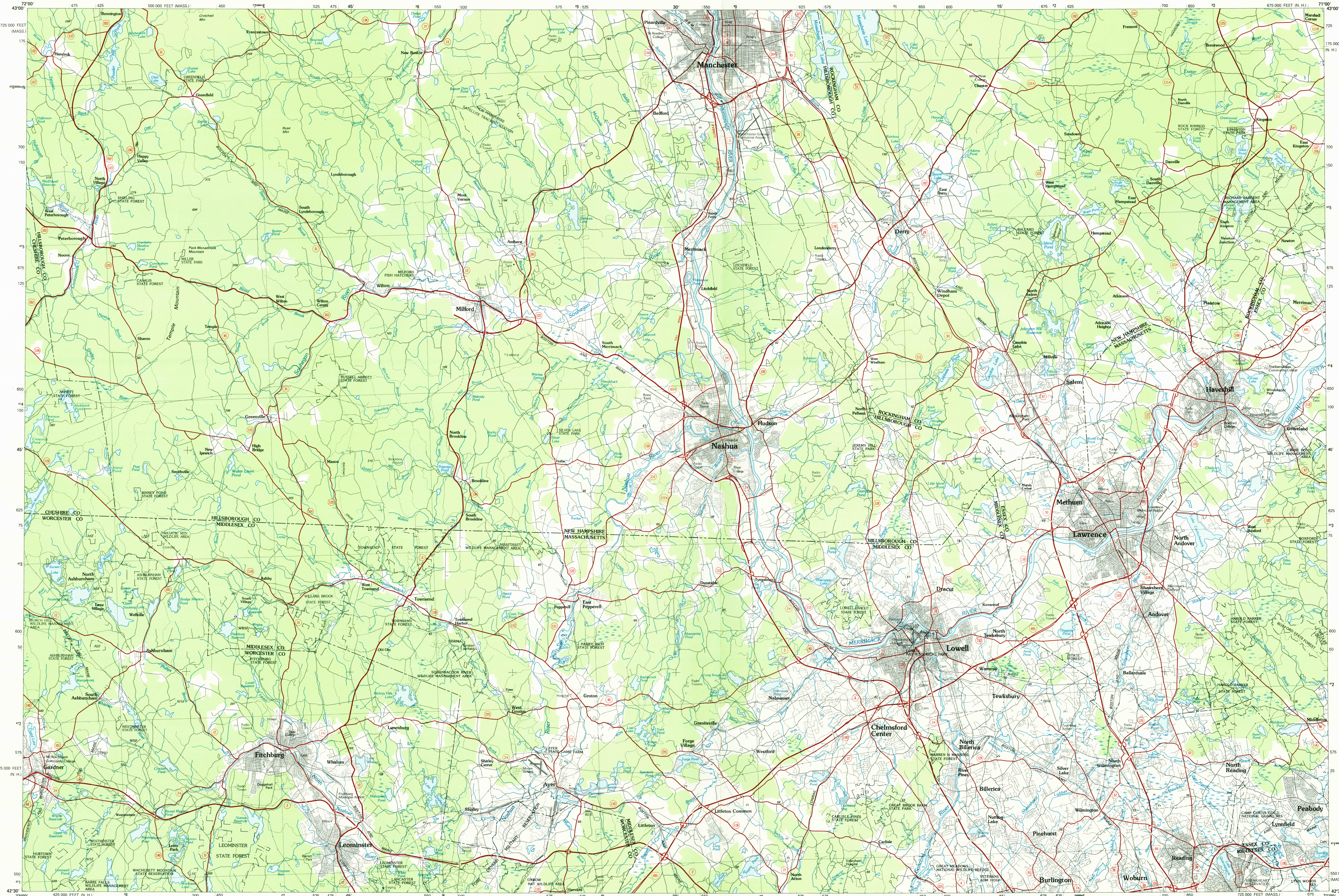


LOWELL, MASSACHUSETTS – NEW HAMPSHIRE

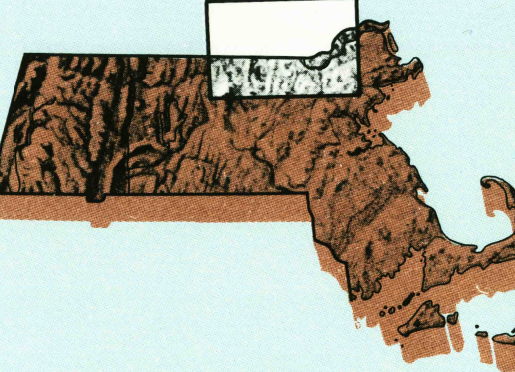
30 X 60 MINUTE SERIES (PLANIMETRIC)



Lowell

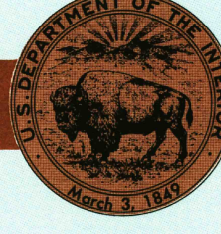
MASSACHUSETTS NEW HAMPSHIRE

1:100 000-scale
planimetric map



30 X 60 MINUTE QUADRANGLE
SHOWING

- Elevations in meters
- Highways, roads and other manmade structures
- Water features
- Woodland areas
- Geographic names



GEOLOGICAL SURVEY

1984

Produced by the United States Geological Survey
Compiled from USGS 1:24 000, 1:25 000, and 1:62 500-scale
topographic maps dated 1953–1979. Planimetry revised from
aerial photographs taken 1978 and other source data. Revised
information not held checked. Map edited 1984.
Projection and 10 000-meter grid, zone 19; Universal Transverse
Mercator.
25 000-foot grid ticks based on New Hampshire coordinate system
and Massachusetts coordinate system, mainland zone
1927 North American Datum.
To place on the predicted North American Datum 1983 move the
projection lines 6 meters south and 40 meters west.
There may be private inholdings within the boundaries of the
National or State reservations shown on this map.

NATIONAL GEODETIC VERTICAL DATUM OF 1929
ELEVATIONS SHOWN TO THE NEAREST METER


THIS MAP COMPLIES WITH NATIONAL MAP ACCURACY STANDARDS

CONVERSION TABLE	
Meters	Feet
1	3.2808
2	6.5617
3	9.8425
4	13.1234
5	16.4042
6	19.6850
7	22.9659
8	26.2467
9	29.5276
10	32.8084

To convert meters to feet
multiply by 3.2808

To convert feet to meters
multiply by 0.3048

DECLINATION DIAGRAM



UTM grid convergence
(GN and 1984 magnetic
declination (MN)
at center of map
Diagram is approximate

ADJOINING MAPS		
1	2	3
4	5	
6	7	8

- 1 Charenton
- 2 Concord
- 3 Epping
- 4 Keene
- 5 Gloucester
- 6 Hallowell
- 7 Boston
- 8 Provincetown

FOR SALE BY U.S. GEOLOGICAL SURVEY
RESTON, VIRGINIA 22092

Topographic Map Symbols

Primary highway, hard surface	
Secondary highway, hard surface	
Light duty road, principal street, hard or improved surface	
Other road or street, trail	
Route marker: Interstate, U. S. State	
Railroad: standard gauge; narrow gauge	
Bridge: overpass; underpass	
Tunnel: road; railroad	
Built up area: locality, elevation	
Airport: landing field; landing strip	
National boundary	
State boundary	
County boundary	
National or State reservation boundary	
Land grant boundary	
U. S. public lands survey: range, township, section	
Range, township, section line: protected	
Power transmission line; pipeline	
Dam; dam with lock	
Cemetery; building	
Windmill; water well; spring	
Mine shaft; adit or cave; mine, quarry; gravel pit	
Campground; picnic area; U. S. location monument	
Rail; self-winding	
Disturbed surface: strip mine, lava, sand	
Contours: index; intermediate; supplementary	
Bathymetric contours: index; intermediate	
Stream, lake: perennial; intermittent	
Rapids, large and small; falls, large and small	
Area to be submerged; marsh, swamp	
Land subject to controlled inundation; woodland	
Scrub; mangrove	
Orchard; vineyard	

A pamphlet describing topographic maps is available on request

RETURN TO:
USGS AND HISTORICAL MAP ARCHIVES