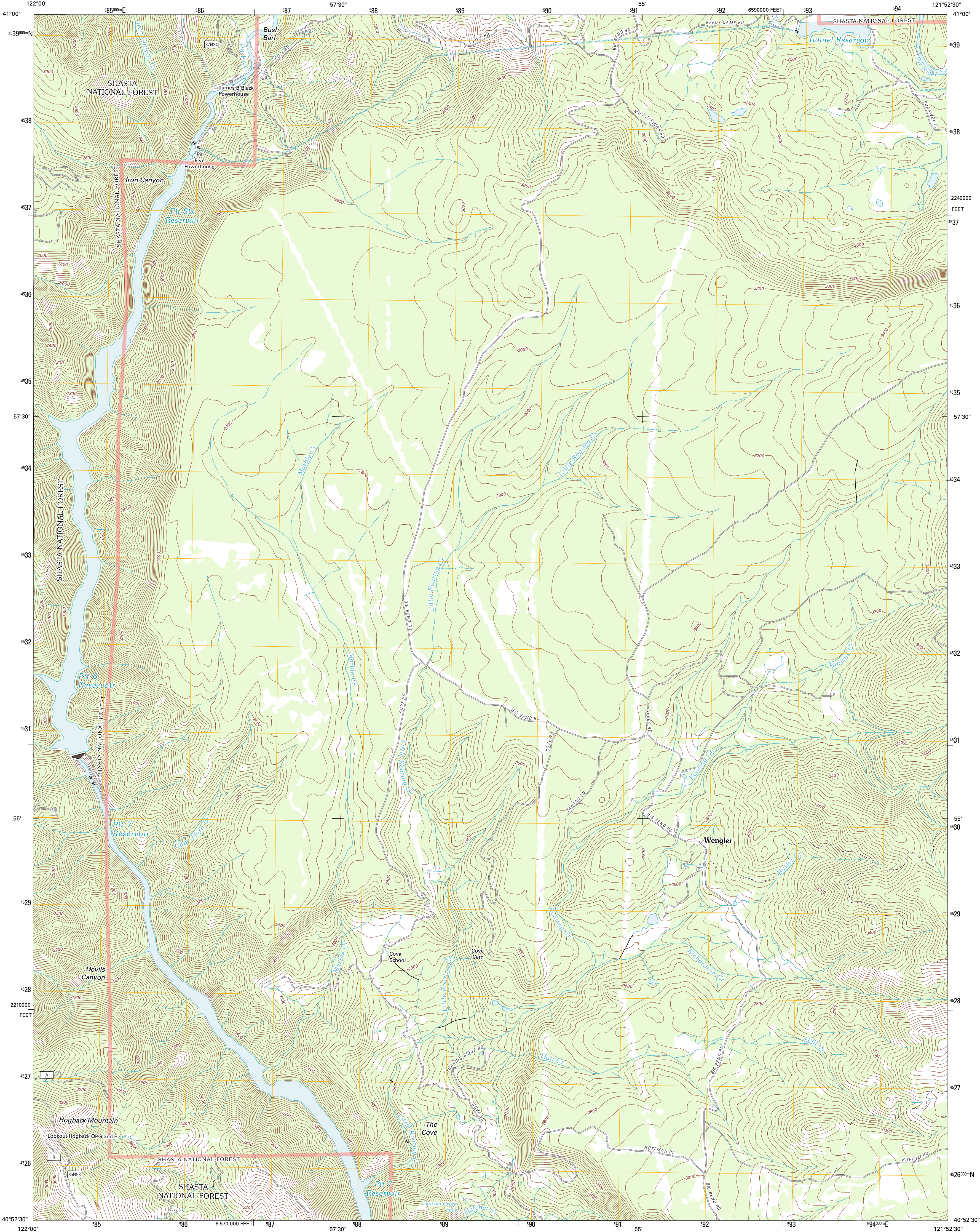




U.S. DEPARTMENT OF THE INTERIOR
U. S. GEOLOGICAL SURVEY

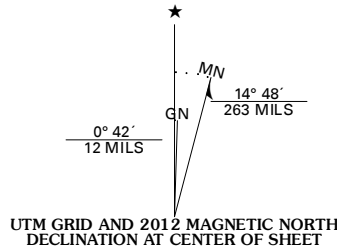


ROARING CREEK QUADRANGLE
CALIFORNIA-SHASTA CO.
7.5-MINUTE SERIES

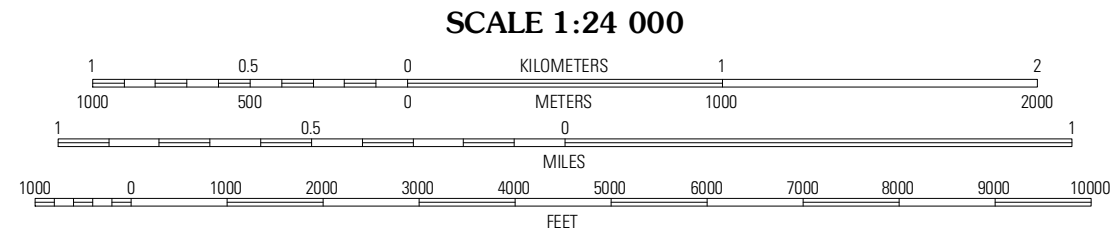


Produced by the United States Geological Survey
North American Datum of 1983 (NAD83)
World Geodetic System of 1984 (WGS84). Projection and
1 000-meter grid: Universal Transverse Mercator, Zone 10T
10 000-foot ticks: California Coordinate System of 1983
(zone 1)

Imagery.....NAIP, July 2010
Roads.....©2006-2011 TomTom
Roads within US Forest Service Lands.....FS Topo Data
with limited Forest Service updates, 2009
Names.....GNIS, 2011
Hydrography.....National Hydrography Dataset, 2010
Contours.....National Elevation Dataset, 2001
Boundaries.....Census, IBWC, IBC, USGS, 1972 - 2010



U.S. National Grid 100,000-m Square ID
EL
Grid Zone Designation 10T



CONTOUR INTERVAL 40 FEET
NORTH AMERICAN VERTICAL DATUM OF 1988
This map was produced to conform with the
National Geospatial Program US Topo Product Standard, 2011.
A metadata file associated with this product is draft version 0.6.1



QUADRANGLE LOCATION		
Shoshone Mountain	Big Bend	Skunk Ridge
Goose Gap	Roaring Creek	Chalk Mountain
Devils Rock	Montgomery Creek	Hatchet Mountain Pass

ROAD CLASSIFICATION
Interstate Route
US Route
Ramp
Interstate Route
FS Primary Route
State Route
Local Road
4WD
FS Passenger Route
FS High Clearance Route
Check with local Forest Service unit
for current travel conditions and restrictions.

ROARING CREEK, CA
2012

ADJOINING 7.5 QUADRANGLES