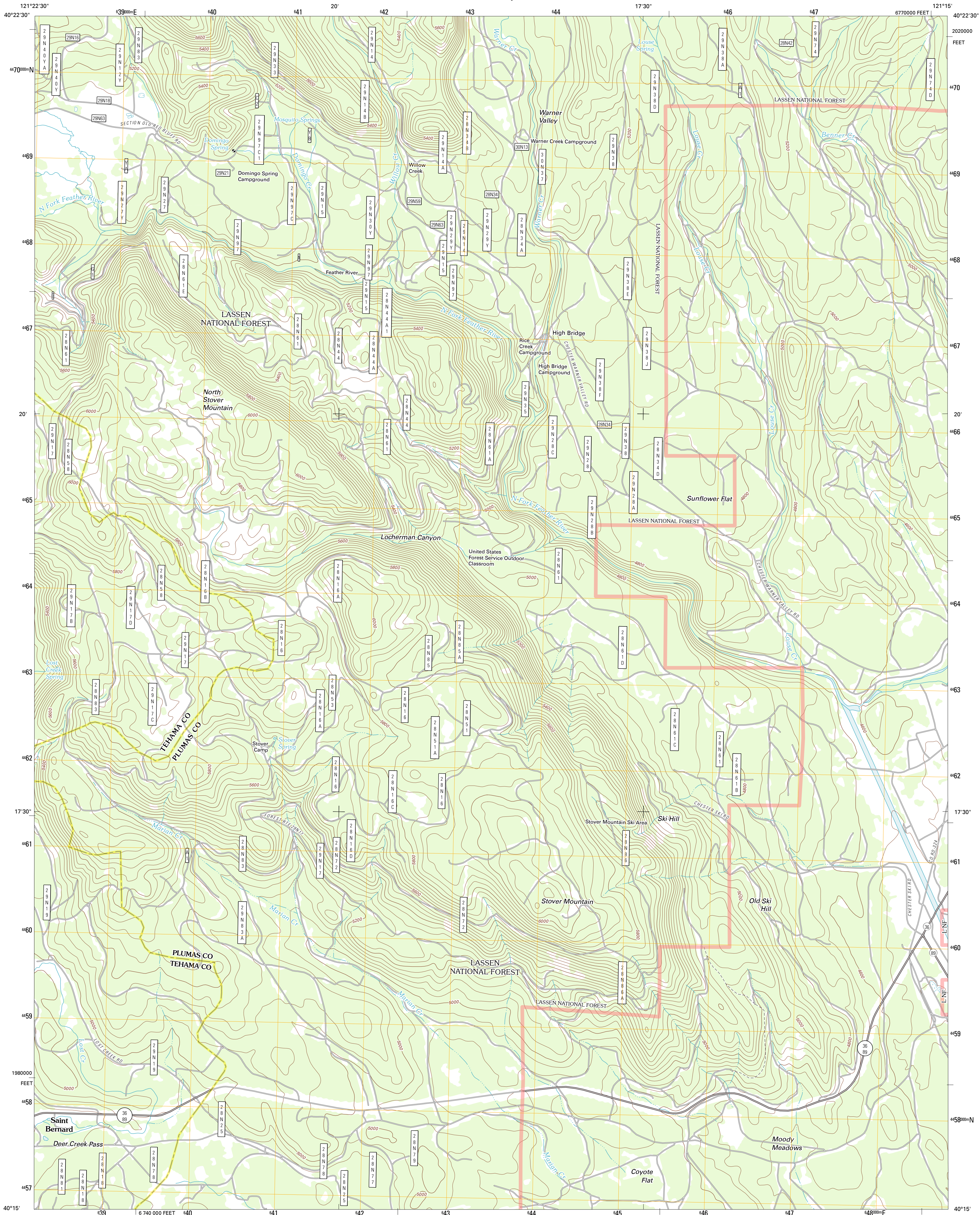




U.S. DEPARTMENT OF THE INTERIOR
U. S. GEOLOGICAL SURVEY



STOVER MOUNTAIN QUADRANGLE
CALIFORNIA
7.5-MINUTE SERIES

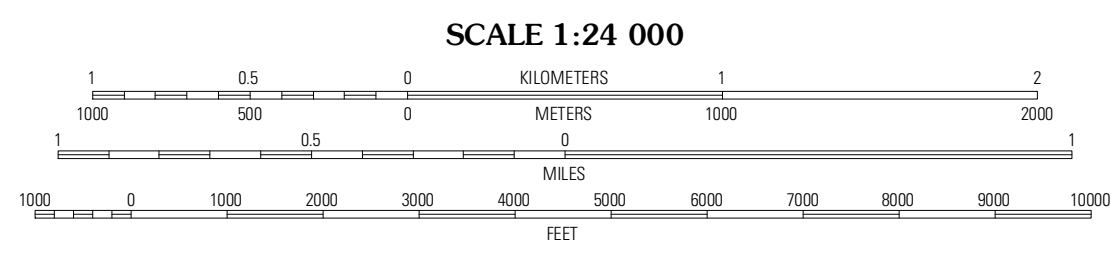


Produced by the United States Geological Survey
North American Datum of 1983 (NAD83)
World Geodetic System of 1984 (WGS84). Projection and
1 000-meter grid. Universal Transverse Mercator, Zone 10T
10 000-foot ticks: California Coordinate System of 1983
(zone 1)

Imagery.....NAP, August 2010
Roads.....©2006-2011 TomTom
Roads within US Forest Service Lands.....FS Topo Data
with limited Forest Service updates, 2009
Names.....GNIS, 2011
Hydrography.....National Hydrography Dataset, 2010
Contours.....National Elevation Dataset, 1999
Boundaries.....Census, IBWC, IBC, USGS, 1972 - 2010

UTM GRID AND 2012 MAGNETIC NORTH
DECLINATION AT CENTER OF SHEET

U.S. National Grid
100,000-m Square ID
FK
Grid Zone Designation
10T



CONTOUR INTERVAL 40 FEET
NORTH AMERICAN VERTICAL DATUM OF 1988
This map was produced to conform with the
National Geospatial Program US Topo Product Standard, 2011.
A metadata file associated with this product is draft version 0.6.1



QUADRANGLE LOCATION		
Reading Peak	Mount Harkness	Red Cinder
Childs Meadows	Stover Mountain	Chester
Humboldt Peak	Humboldt Valley	Almanor

ROAD CLASSIFICATION
Interstate Route
US Route
Ramp
Interstate Route
US Route
FS Primary Route
FS Passenger Route
FS High Clearance Route
State Route
Local Road
4WD

Check with local Forest Service unit
for current travel conditions and restrictions.

STOVER MOUNTAIN, CA
2012