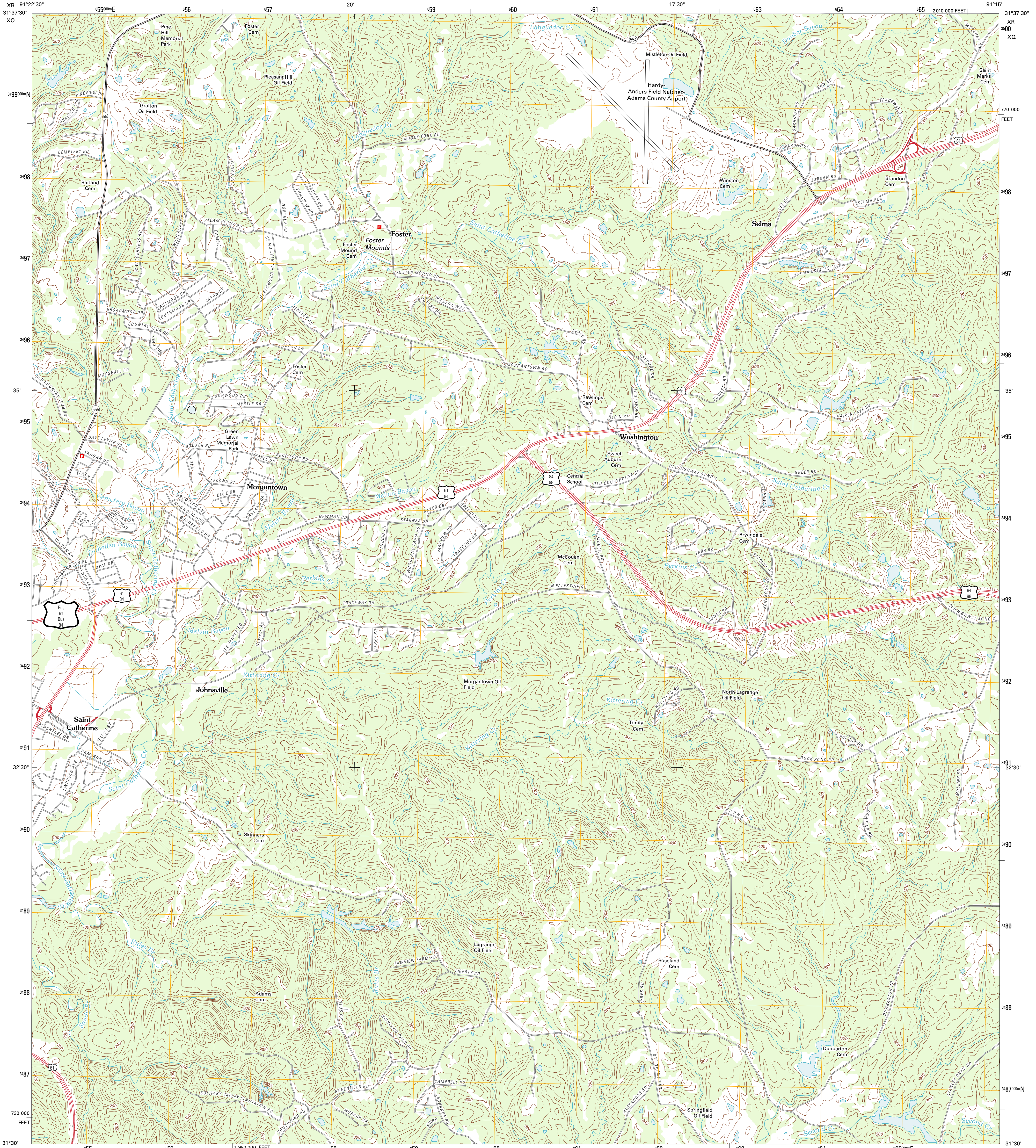




U.S. DEPARTMENT OF THE INTERIOR
U. S. GEOLOGICAL SURVEY



WASHINGTON QUADRANGLE
MISSISSIPPI-ADAMS CO.
7.5-MINUTE SERIES



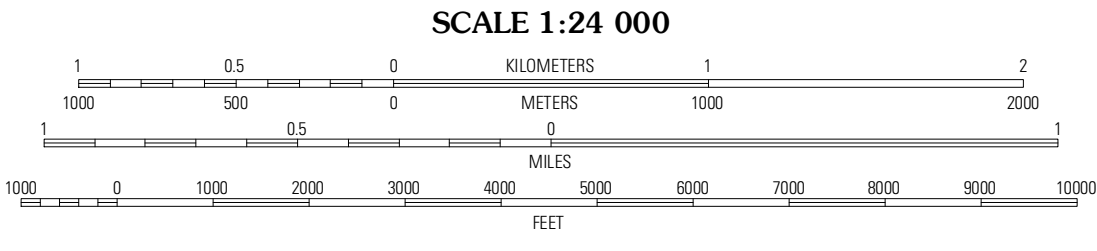
Produced by the United States Geological Survey
North American Datum of 1983 (NAD83)
World Geodetic System of 1984 (WGS84). Projection and
1 000-meter grid: Universal Transverse Mercator, Zone 15R
10 000-foot ticks: Mississippi Coordinate System of 1983
(west zone)

Imagery.....NAIP, August 2010
Roads.....©2006-2011 TTM
Names.....GNIS, 2011
Hydrography.....National Hydrography Dataset, 2010
Contours.....National Elevation Dataset, 2008
Boundaries.....Census, IBWC, IBC, USGS, 1972 - 2010

UTM GRID AND 2012 MAGNETIC NORTH
DECLINATION AT CENTER OF SHEET

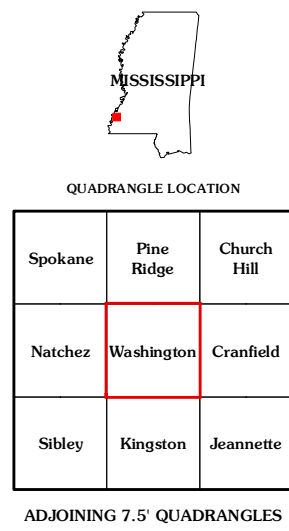
9° 53' 16 MILLS
0° 28' 8 MILLS

U.S. National Grid
100,000-m Square ID
XR 750
XD 750
Grid Zone Designation
18R



CONTOUR INTERVAL 20 FEET
NORTH AMERICAN VERTICAL DATUM OF 1988

This map was produced to conform with the
National Geospatial Program US Topo Product Standard, 2011.
A metadata file associated with this product is draft version 0.6.2



ROAD CLASSIFICATION

Interstate Route
US Route
Ramp

State Route
Local Road
4WD

WASHINGTON, MS
2012