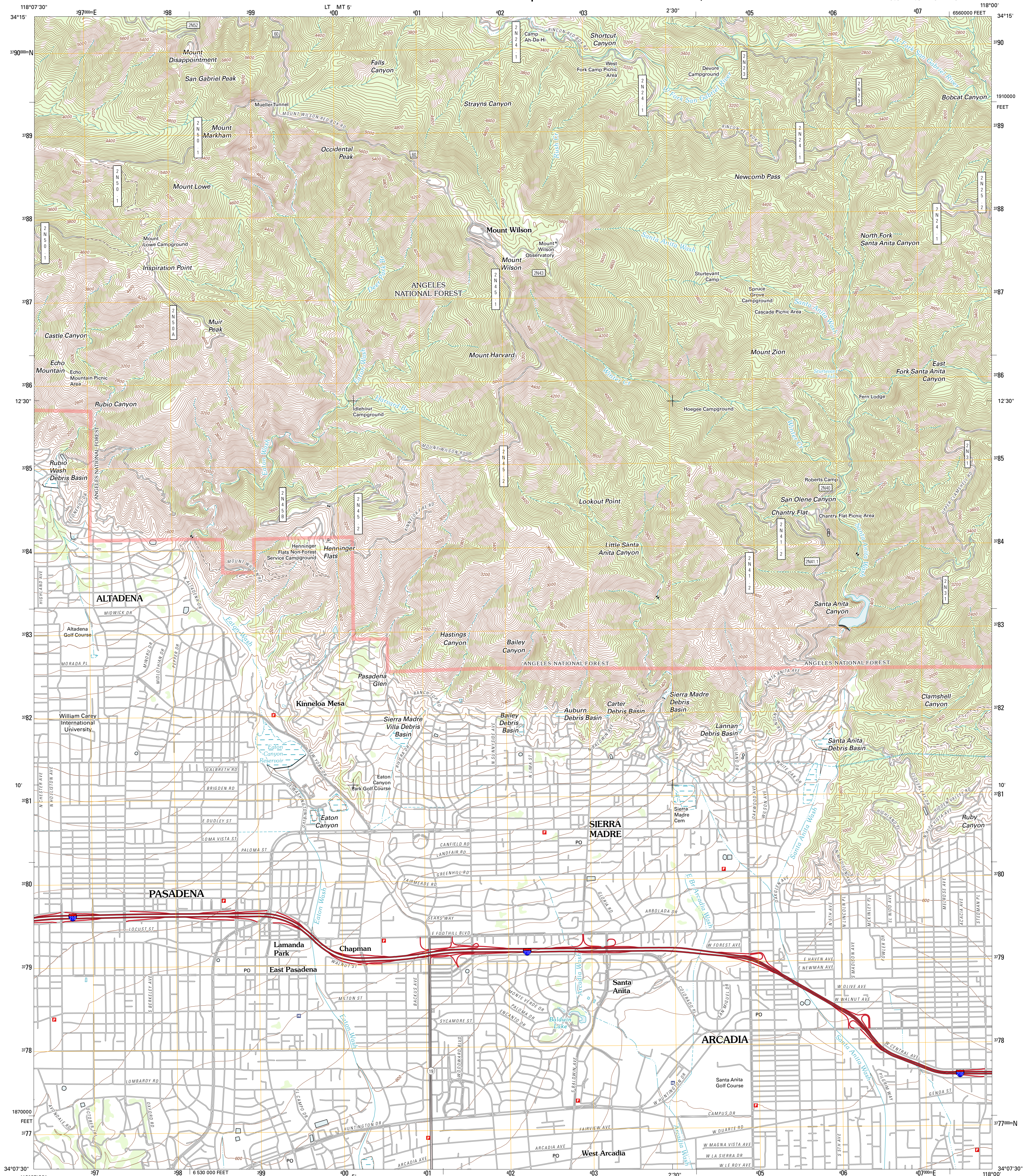




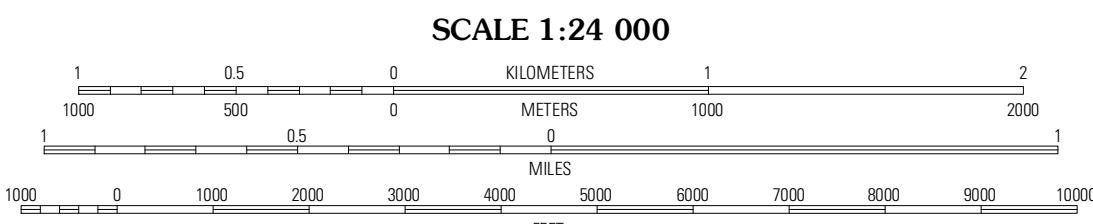
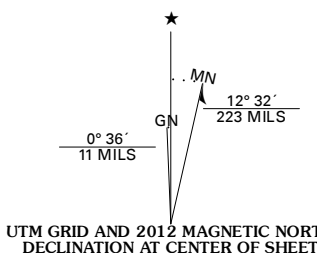
U.S. DEPARTMENT OF THE INTERIOR
U. S. GEOLOGICAL SURVEY



MOUNT WILSON QUADRANGLE
CALIFORNIA-LOS ANGELES CO.
7.5-MINUTE SERIES



Produced by the United States Geological Survey
North American Datum of 1983 (NAD83)
World Geodetic System of 1984 (WGS84). Projection and
1 000-meter grid: Universal Transverse Mercator, Zone 11S
10 000-foot ticks: California Coordinate System of 1983
(zone 5)



CONTOUR INTERVAL 40 FEET
NORTH AMERICAN VERTICAL DATUM OF 1988

This map was produced to conform with the
National Geospatial Program US Topo Product Standard, 2011.
A metadata file associated with this product is draft version 0.6.1



QUADRANGLE LOCATION		
Condor Peak	Chico Flat	Waterman Mountain
Pasadena	Mount Wilson	Anusa
Los Angeles	El Monte	Baldwin Park

ROAD CLASSIFICATION

Interstate Route
US Route
Ramp

State Route
Local Road
4WD

FS Primary Route
FS Passenger Route
FS High Clearance Route

Check with local Forest Service unit
for current travel conditions and restrictions.

MOUNT WILSON, CA
2012