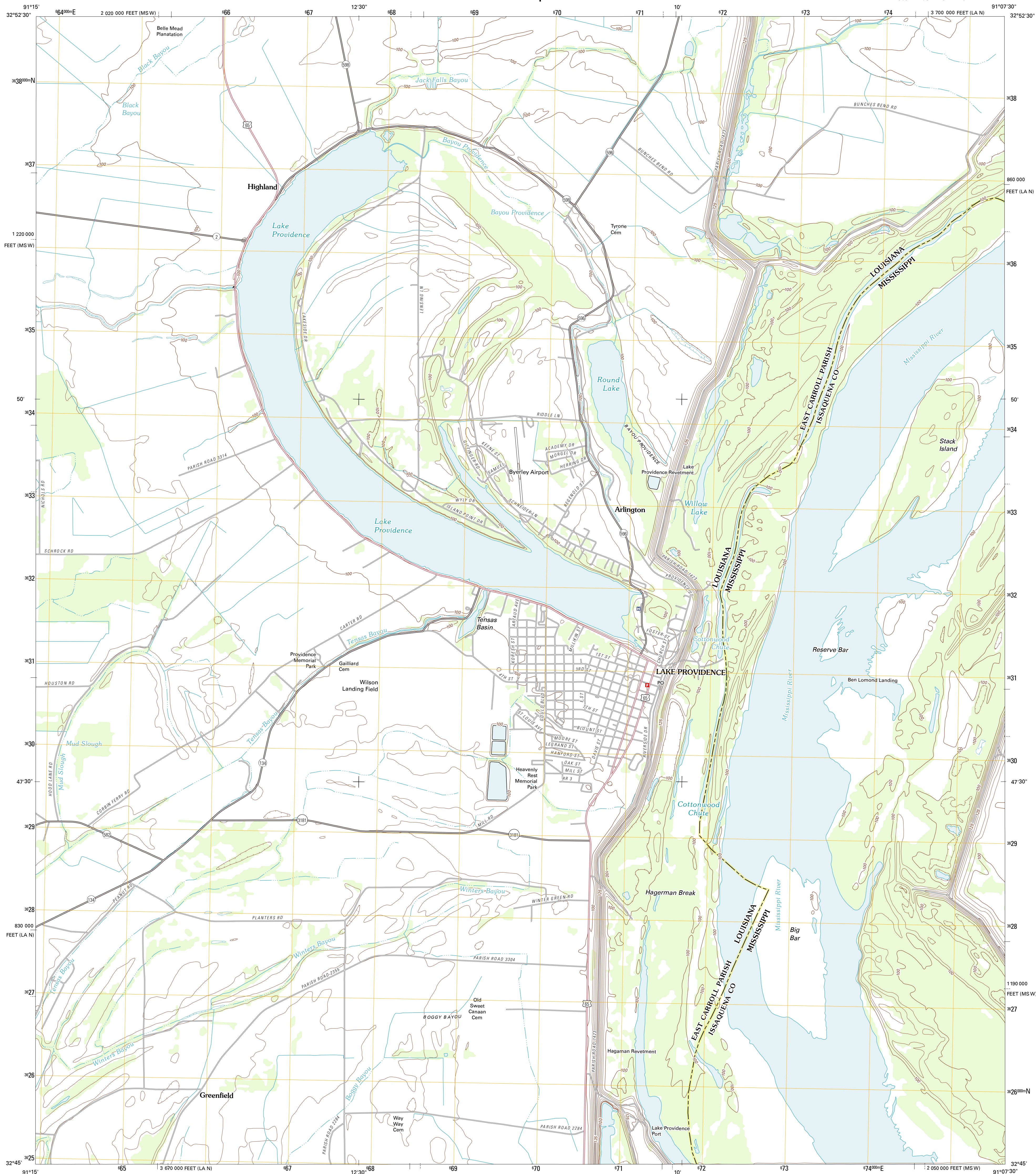




U.S. DEPARTMENT OF THE INTERIOR
U. S. GEOLOGICAL SURVEY

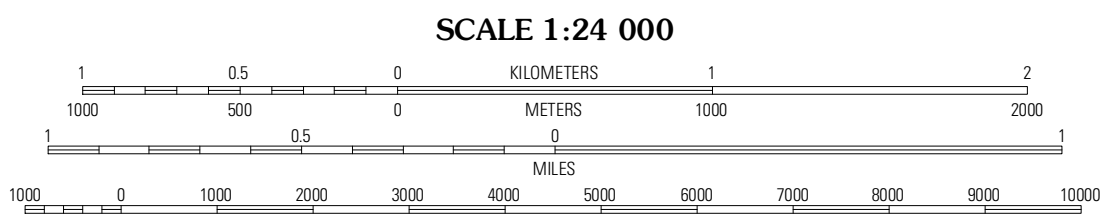
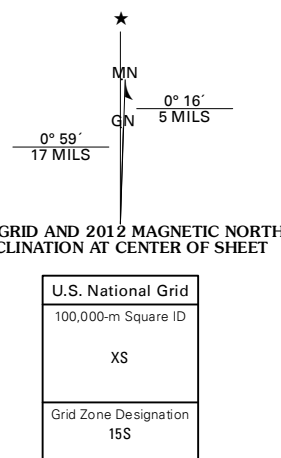


LAKE PROVIDENCE QUADRANGLE
LOUISIANA-MISSISSIPPI
7.5-MINUTE SERIES



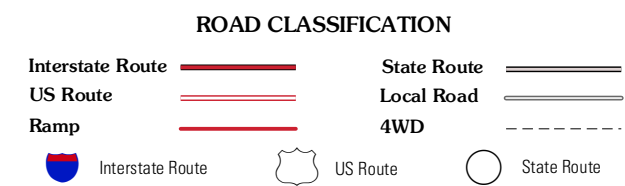
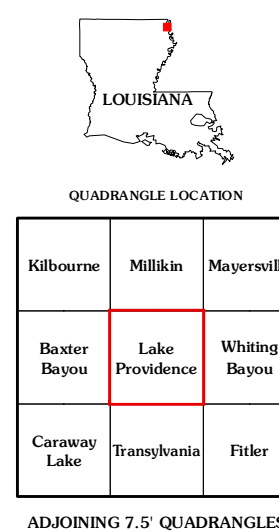
Produced by the United States Geological Survey
North American Datum of 1983 (NAD83)
World Geodetic System of 1984 (WGS84) Projection and
1 000-foot ticks: Louisiana Coordinate System of 1983
(north zone), Mississippi Coordinate System of 1983 (west zone)

Imagery.....NAIP, May 2010
Roads.....©2006-2011 TomTom
Names.....GNIS, 2011
Hydrography.....National Hydrography Dataset, 2010
Contours.....National Elevation Dataset, 2011
Boundaries.....Census, BWC, IBC, USGS, 1972 - 2010



CONTOUR INTERVAL 5 FEET
NORTH AMERICAN VERTICAL DATUM OF 1988

This map was produced to conform with the
National Geospatial Program US Topo Product Standard, 2011.
A metadata file associated with this product is draft version 0.6.1



| Kilbourne | Milliken | Mayersville |
|--------------|-----------------|---------------|
| Baxter Bayou | Lake Providence | Whiting Bayou |
| Caraway Lake | Transylvania | Filler |

LAKE PROVIDENCE, LA-MS
2012

ADJOINING 7.5' QUADRANGLES