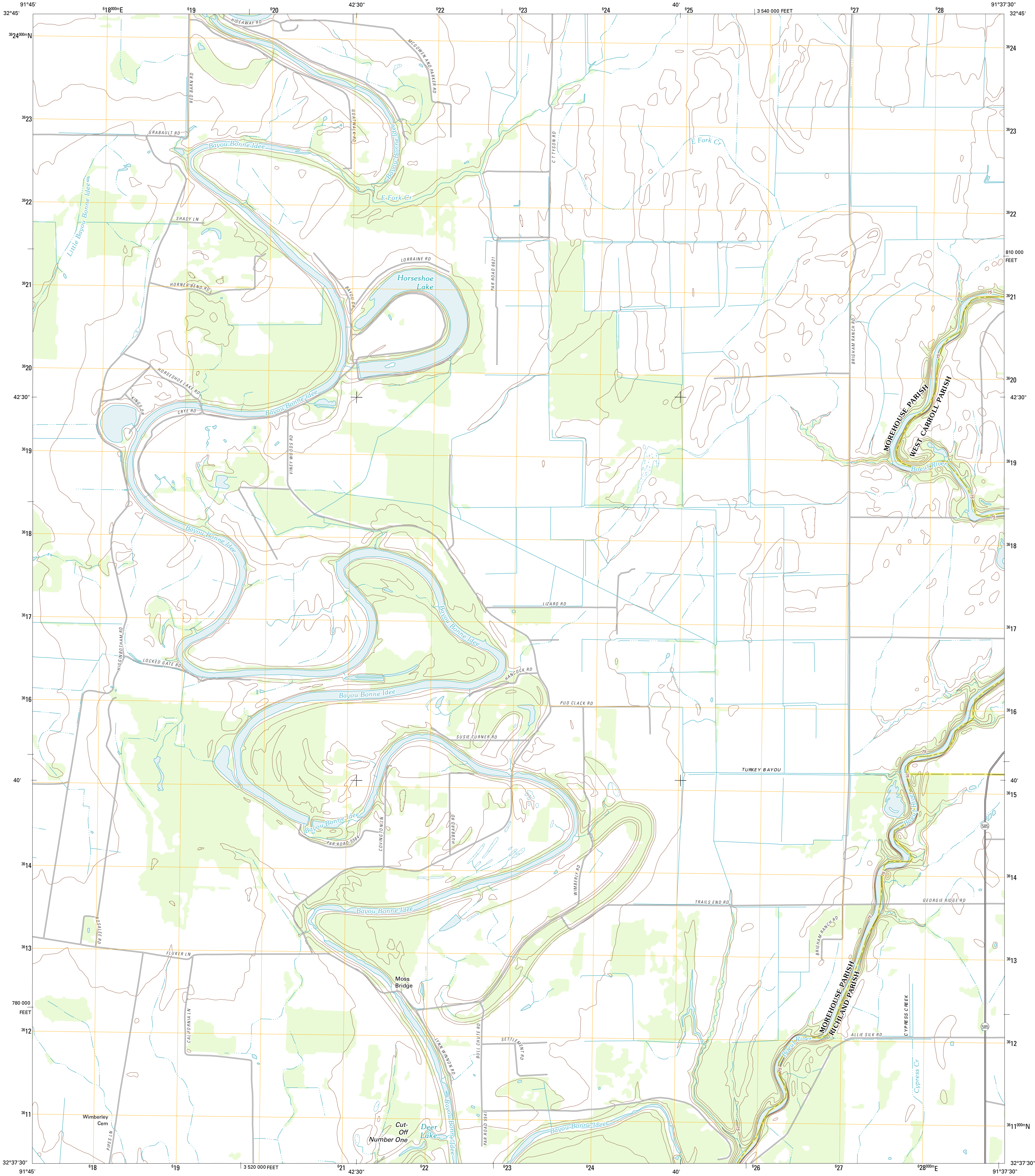




U.S. DEPARTMENT OF THE INTERIOR  
U. S. GEOLOGICAL SURVEY

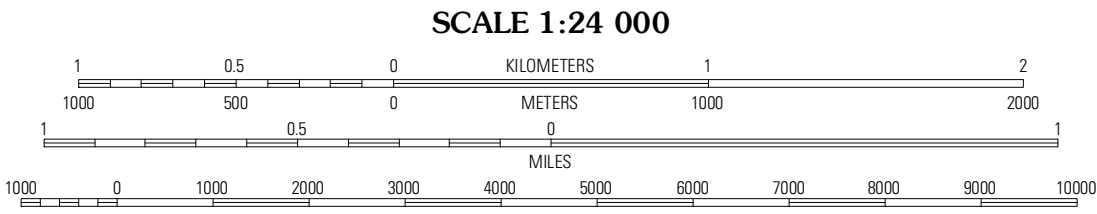
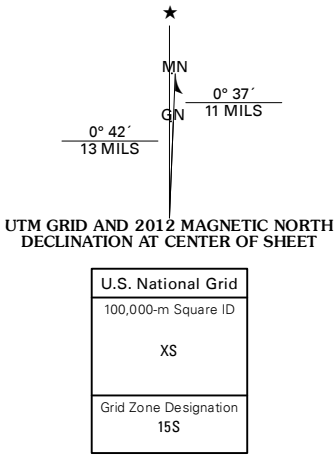


WHITNEY ISLAND NORTH QUADRANGLE  
LOUISIANA  
7.5-MINUTE SERIES



Produced by the United States Geological Survey  
North American Datum of 1983 (NAD83)  
World Geodetic System of 1984 (WGS84). Projection and  
1 000-meter grid: Universal Transverse Mercator, Zone 15S  
10 000-foot ticks: Louisiana Coordinate System of 1983  
(north zone)

Imagery.....NAIP, June 2010  
Roads.....©2006-2011 TomTom  
Names.....GNIS, 2011  
Hydrography.....National Hydrography Dataset, 2010  
Contours.....National Elevation Dataset, 2011  
Boundaries.....Census, IBWC, IBC, USGS, 1972-2010



CONTOUR INTERVAL 5 FEET  
NORTH AMERICAN VERTICAL DATUM OF 1988  
This map was produced to conform with the  
National Geospatial Program US Topo Product Standard, 2011.  
A metadata file associated with this product is draft version 0.6.1



Mer Rouge	Bonita SW	Goodwill
Collinston East	Whitney Island North	Bear Skin
Irwin Lake	Whitney Island South	Congo Creek

ROAD CLASSIFICATION  
Interstate Route  
US Route  
State Route  
Local Road  
4WD

WHITNEY ISLAND NORTH, LA  
2012