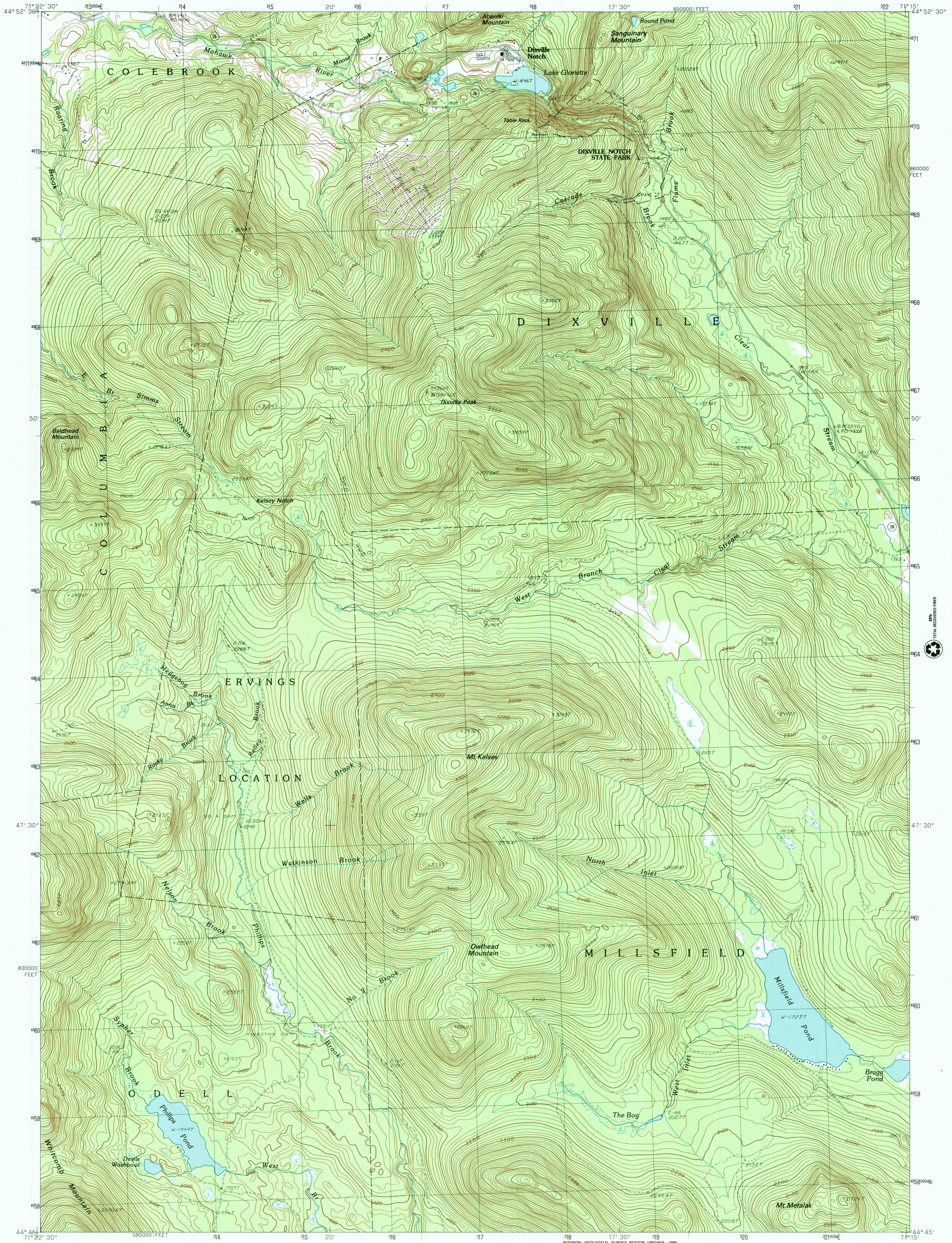


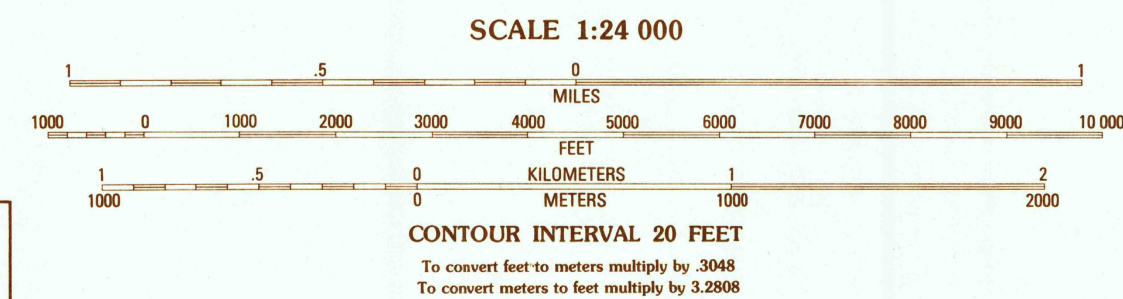
UNITED STATES
DEPARTMENT OF THE INTERIOR
GEOLOGICAL SURVEY

DIXVILLE NOTCH QUADRANGLE
NEW HAMPSHIRE-COOS CO.
7.5 MINUTE SERIES (TOPOGRAPHIC)



PRODUCED BY THE UNITED STATES GEOLOGICAL SURVEY
CONTROL BY USGS, NOS/NOAA, AND NHDOT
COMPILED FROM AERIAL PHOTOGRAPHS TAKEN 1983
FIELD CHECKED 1984 MAP EDITED 1988
PROJECTION TRANSVERSE MERCATOR
GRID 1000-METER UNIVERSAL TRANSVERSE MERCATOR ZONE 19
10,000-FOOT STATE GRID TICKS NEW HAMPSHIRE
UTM GRID DECLINATION 1°38' WEST
1988 MAGNETIC NORTH DECLINATION 17°00' WEST
VERTICAL DATUM NATIONAL GEODETIC VERTICAL DATUM OF 1929
HORIZONTAL DATUM 1927 NORTH AMERICAN DATUM
To place on the predicted North American Datum of 1983,
move the projection lines as shown by dashed corner ticks
(2 meters south and 39 meters west)
There may be private inholdings within the boundaries of any
Federal and State reservations shown on this map
No distinction made between houses, barns, and other buildings

PROVISIONAL MAP
Produced from original
manuscript drawings. Infor-
mation shown as of date of
photography.



THIS MAP COMPLIES WITH NATIONAL MAP ACCURACY STANDARDS
FOR SALE BY U.S. GEOLOGICAL SURVEY, DENVER, COLORADO 80225, OR RESTON, VIRGINIA 22092

1	2	3	1 Lowering Mountain
4	5	2 Diamond Pond	
6	7	3 Mount Pisgah	
		4 Blue Mountain	
		5 Errol	
		6 Percy Peaks	
		7 Dummer Ponds	
		8 Teakettle Ridge	

ADJOINING 7.5' QUADRANGLE NAMES

ROAD LEGEND

Improved Road
Unimproved Road
Trail

Interstate Route U.S. Route State Route

DIXVILLE NOTCH, NEW HAMPSHIRE
PROVISIONAL EDITION 1988

44071-G3-TF-024

RECEIVED

MAR 31 2000

USGS/NHD
HISTORICAL MAP ARCHIVES

ISBN 0-607-36648-6
9 780607 366488