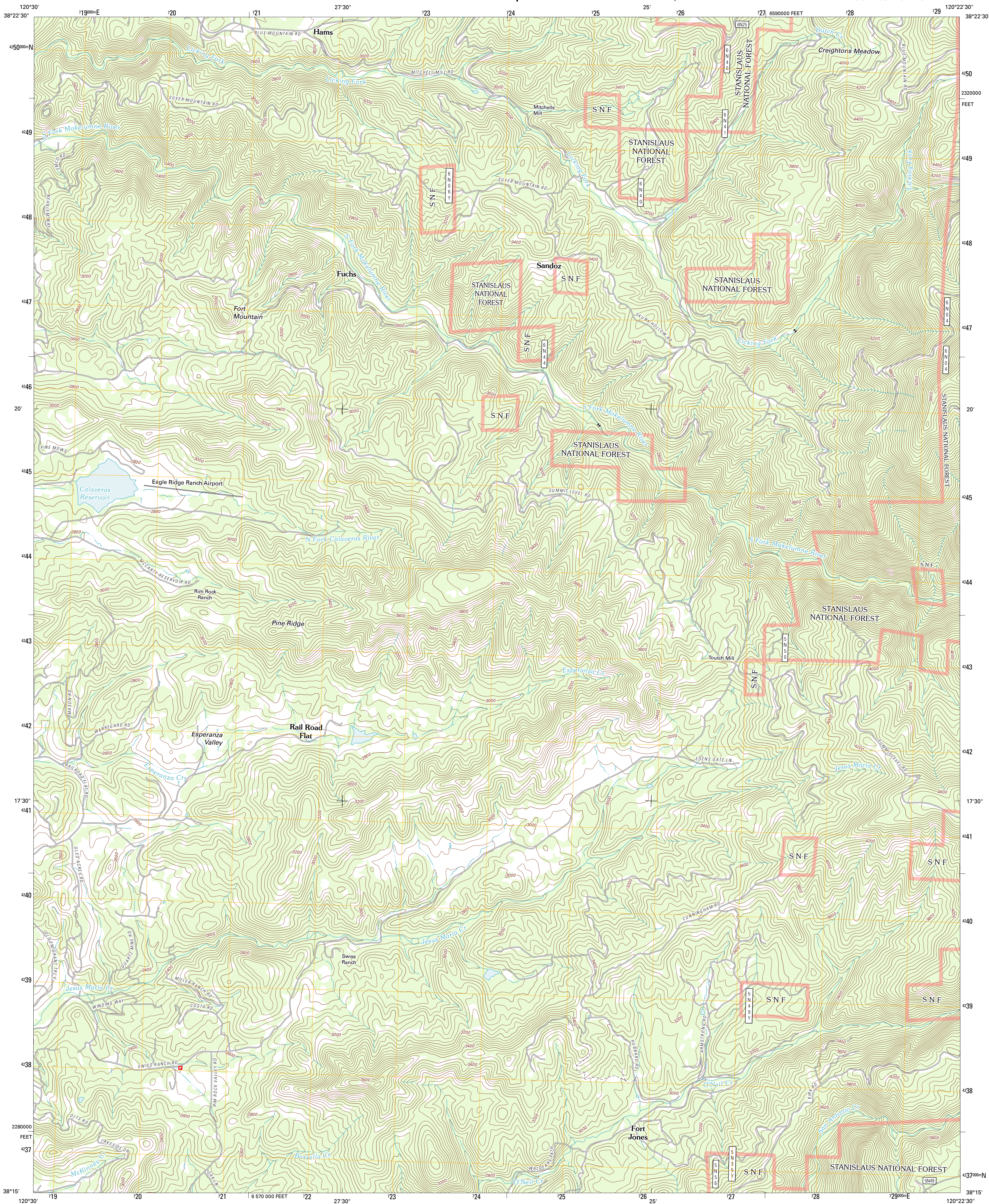




U.S. DEPARTMENT OF THE INTERIOR  
U. S. GEOLOGICAL SURVEY

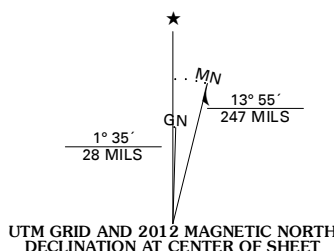


FORT MOUNTAIN QUADRANGLE  
CALIFORNIA-CALAVERAS CO.  
7.5-MINUTE SERIES

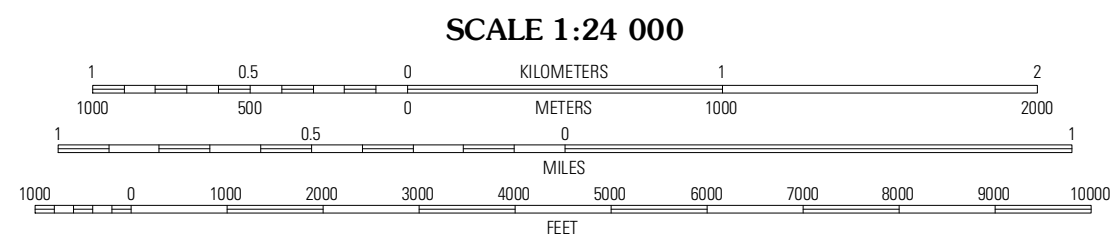


Produced by the United States Geological Survey  
North American Datum of 1983 (NAD83)  
World Geodetic System of 1984 (WGS84). Projection and  
1 000-meter grid. Universal Transverse Mercator, Zone 10S  
10 000-foot ticks: California Coordinate System of 1983  
(zone 3)

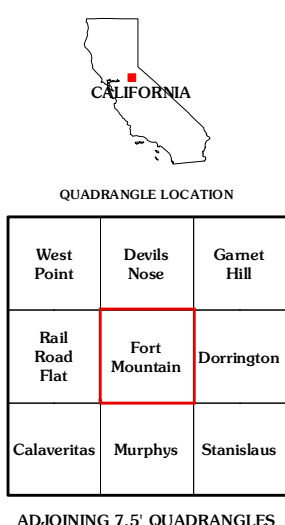
Imagery.....NAIP, July 2010  
Roads.....©2006-2011 TomTom  
Roads within US Forest Service Lands.....FS Topo Data  
with limited Forest Service updates, 2009  
Names.....GNIS, 2011  
Hydrography.....National Hydrography Dataset, 2010  
Contours.....National Elevation Dataset, 2001  
Boundaries.....Census, IBWC, IBC, USGS, 1972 - 2010



U.S. National Grid
100,000-m Square ID
6R
Grid Zone Designation
10S



CONTOUR INTERVAL 40 FEET  
NORTH AMERICAN VERTICAL DATUM OF 1988  
This map was produced to conform with the  
National Geospatial Program US Topo Product Standard, 2011.  
A metadata file associated with this product is draft version 0.6.1



ROAD CLASSIFICATION			
Interstate Route	State Route	Local Road	4WD
US Route			
Ramp			
Interstate Route	US Route	State Route	
FS Primary Route	FS Passenger Route	FS High Clearance Route	

Check with local Forest Service unit  
for current travel conditions and restrictions.

FORT MOUNTAIN, CA  
2012