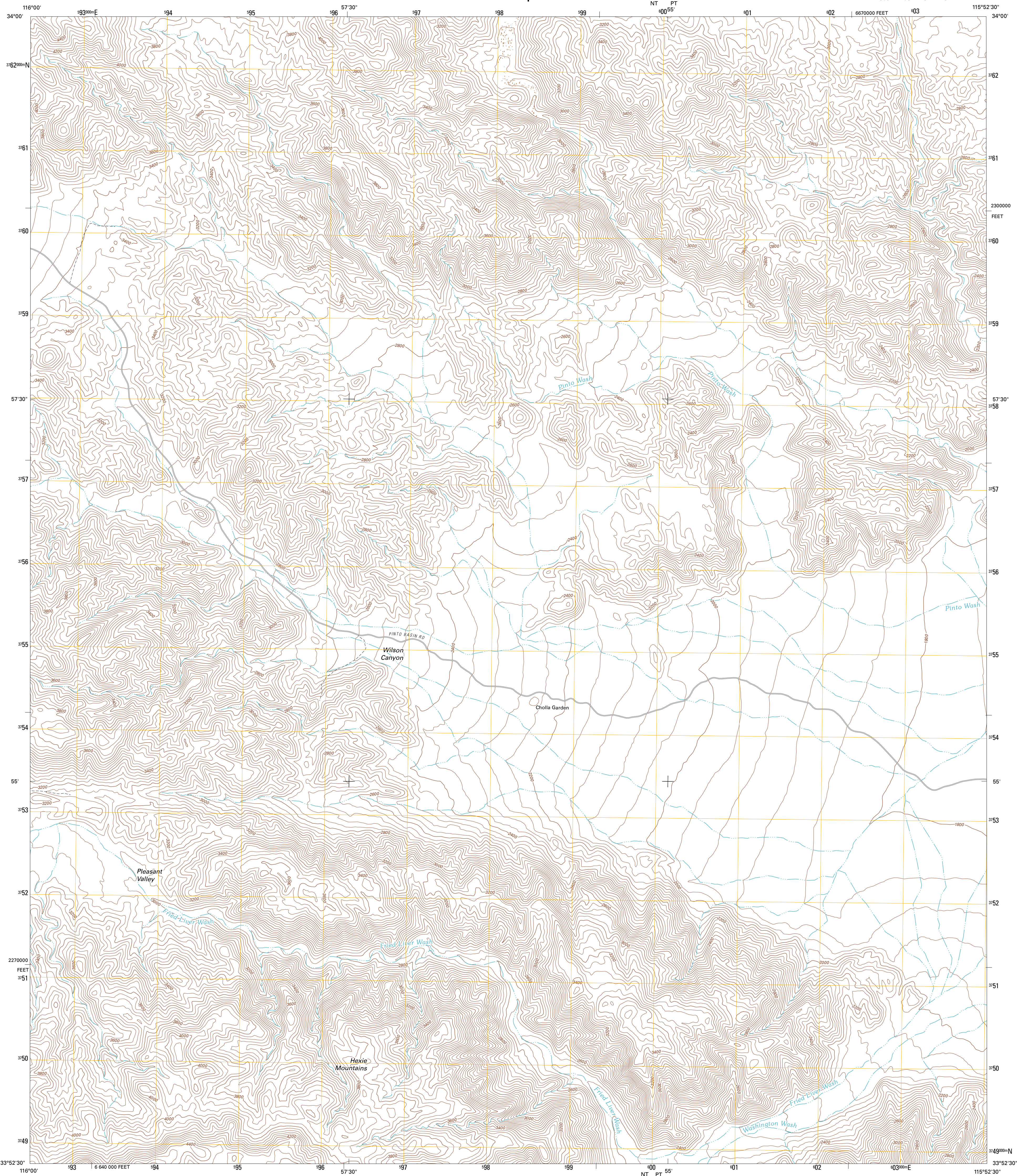




U.S. DEPARTMENT OF THE INTERIOR  
U. S. GEOLOGICAL SURVEY



FRIED LIVER WASH QUADRANGLE  
CALIFORNIA-RIVERSIDE CO.  
7.5-MINUTE SERIES

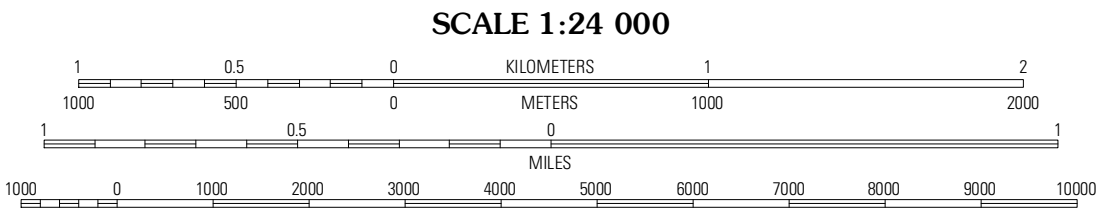


Produced by the United States Geological Survey  
North American Datum of 1983 (NAD83)  
World Geodetic System of 1984 (WGS84). Projection and  
1 000-meter grid: Universal Transverse Mercator, Zone 11S  
10 000-foot ticks: California Coordinate System of 1983  
(zone 6)

Imagery.....NAIP, May 2010  
Roads.....©2006-2011 TomTom  
Names.....GNIS, 2011  
Hydrography.....National Hydrography Dataset, 2010  
Contours.....National Elevation Dataset, 2006  
Boundaries.....Census, BWC, BSC, USGS, 1972 - 2010

UTM GRID AND 2012 MAGNETIC NORTH  
DECLINATION AT CENTER OF SHEET

U.S. National Grid
100,000-m Square ID
100
NT PT
Grid Zone Designation
11S



CONTOUR INTERVAL 40 FEET  
NORTH AMERICAN VERTICAL DATUM OF 1988

This map was produced to conform with the  
National Geospatial Program US Topo Product Standard, 2011.  
A metadata file associated with this product is draft version 0.6.1



QUADRANGLE LOCATION		
Queen Mountain	Twentynine Palms Mountain	Humbug Mountain
Malpais Hill	Fried Liver Wash	Pinto Mountain
Rockhouse Canyon	Washington Wash	Porcupine Wash

ROAD CLASSIFICATION

Interstate Route	State Route
US Route	Local Road
Ramp	4WD

Legend: Interstate Route (thick red line), US Route (thin red line), State Route (grey line), Local Road (dashed grey line), 4WD (dashed line with cross-ticks), Ramp (blue line with red arrow), US Route (circle with number), State Route (circle with number)

FRIED LIVER WASH, CA  
2012