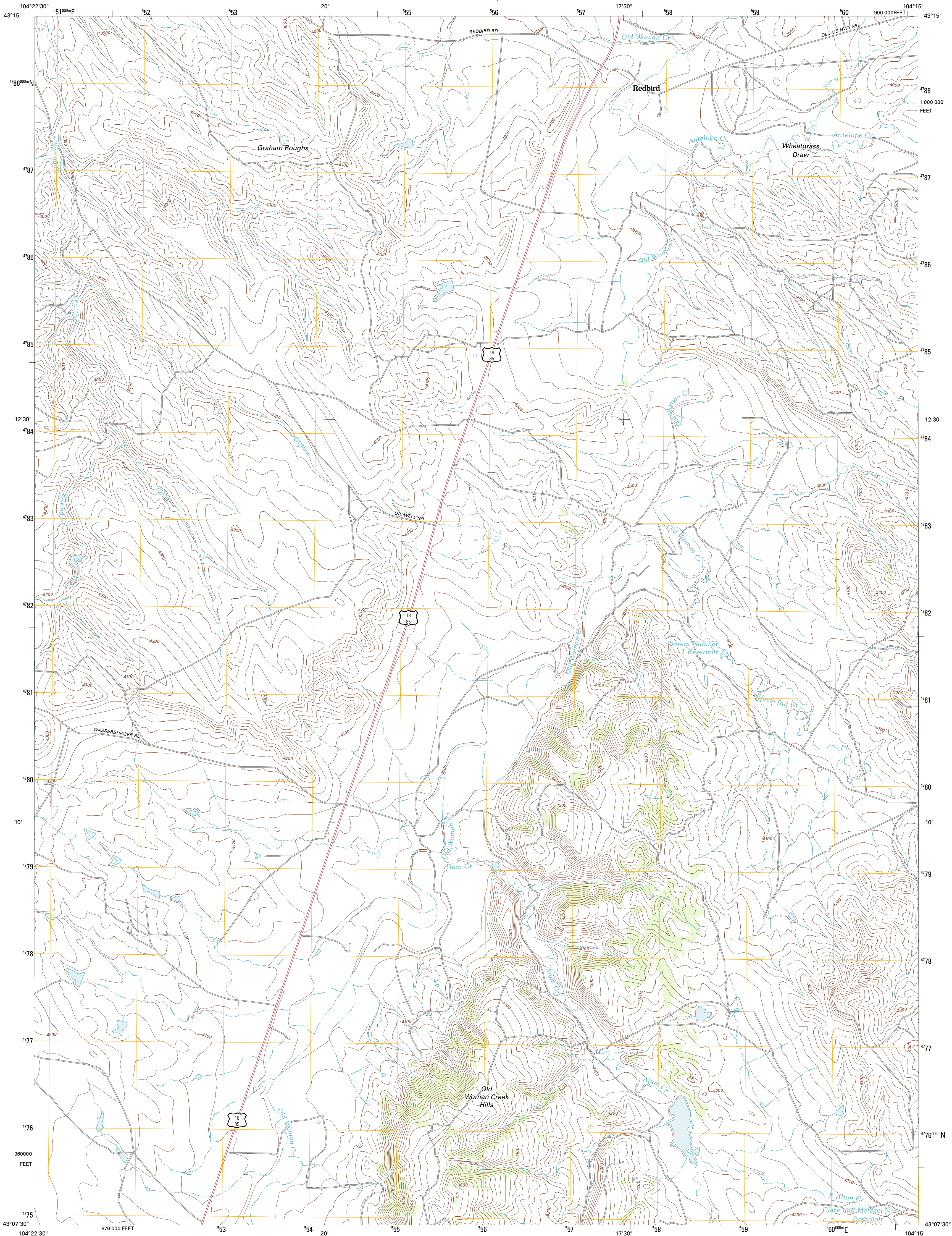




U.S. DEPARTMENT OF THE INTERIOR  
U. S. GEOLOGICAL SURVEY

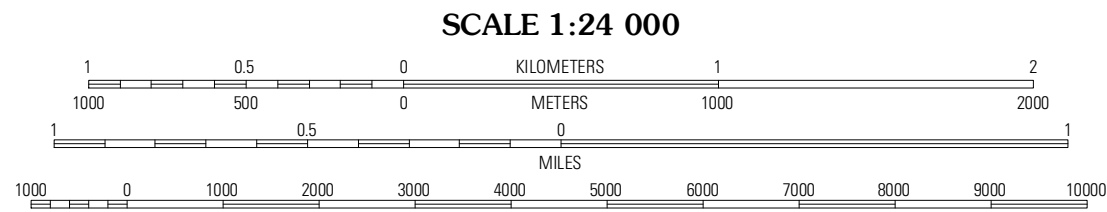
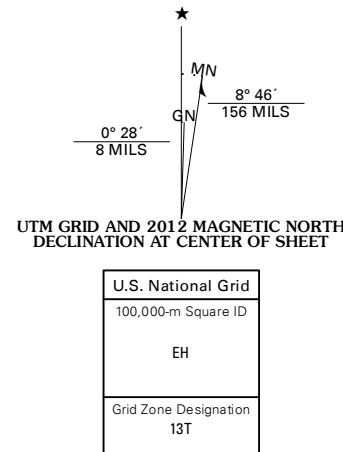


REDBIRD QUADRANGLE  
WYOMING-NIOBRARA CO.  
7.5-MINUTE SERIES

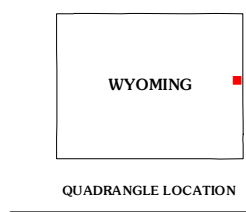


Produced by the United States Geological Survey  
North American Datum of 1983 (NAD83)  
World Geodetic System of 1984 (WGS84). Projection and  
1 000-meter grid: Universal Transverse Mercator, Zone 13T  
10 000-foot ticks: Wyoming Coordinate System of 1983 (east zone)

Imagery.....NAIP, August 2009  
Names.....02006-2011, TomTom  
Hydrography.....National Hydrography Dataset, 2009  
Contours.....National Elevation Dataset, 2011  
Boundaries.....Census, IBWC, IBC, USGS, 1972 - 2010  
Public Land Survey System.....BLM, 2006 - 2008



CONTOUR INTERVAL 20 FEET  
NORTH AMERICAN VERTICAL DATUM OF 1988  
This map was produced to conform with the  
National Geospatial Program US Topo Product Standard, 2011.  
A metadata file associated with this product is draft version 0.6.3



|                  |            |                 |
|------------------|------------|-----------------|
| Greasewood Creek | Bowen Flat | Mule Creek      |
| Buck Creek Hills | Redbird    | Oat Creek NW    |
| Telephone Draw   | Coyote Gap | South Oat Creek |

ADJOINING 7.5' QUADRANGLES

| ROAD CLASSIFICATION |             |             |     |
|---------------------|-------------|-------------|-----|
| Interstate Route    | State Route | Local Road  | 4WD |
| US Route            |             |             |     |
| Ramp                |             |             |     |
| Interstate Route    | US Route    | State Route |     |

REDBIRD, WY  
2012