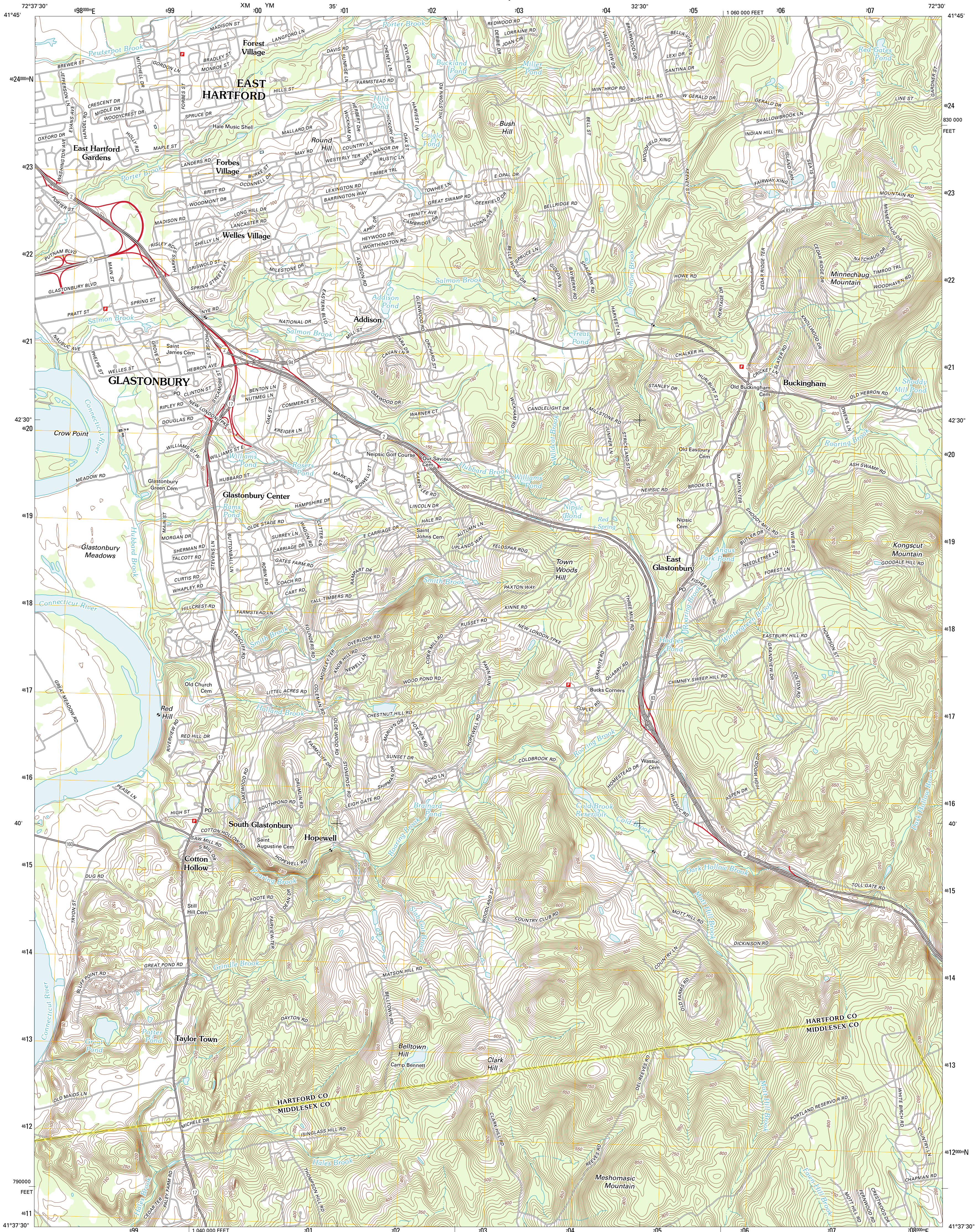




U.S. DEPARTMENT OF THE INTERIOR  
U. S. GEOLOGICAL SURVEY



GLASTONBURY QUADRANGLE  
CONNECTICUT  
7.5-MINUTE SERIES

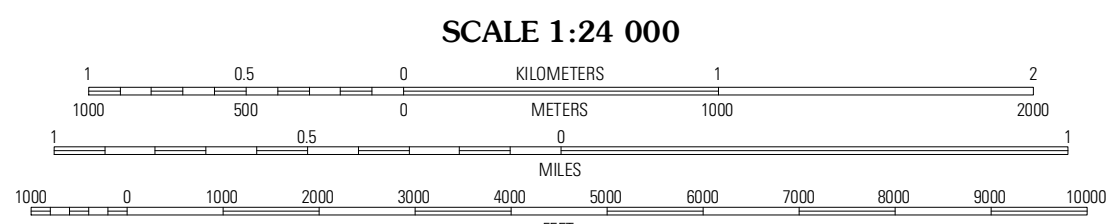


Produced by the United States Geological Survey  
North American Datum of 1983 (NAD83)  
World Geodetic System of 1984 (WGS84). Projection and  
1 000 meter grid: Universal Transverse Mercator, Zone 18T  
10 000-foot ticks: Connecticut Coordinate System of 1983

Imagery:.....NAIP, August 2010  
Roads:.....©2006-2011 TomTom  
Names:.....National Hydrography Dataset, 2010  
Hydrography:.....National Hydrography Dataset, 2010  
Contours:.....National Elevation Dataset, 2012  
Boundaries:.....Census, IBWC, IBC, USGS, 1972 - 2010

UTM GRID AND 2012 MAGNETIC NORTH  
DECLINATION AT CENTER OF SHEET

U.S. National Grid 100,000-m Square ID
700
XM YM
Grid Zone Designation 18T



SCALE 1:24 000  
CONTOUR INTERVAL 10 FEET  
NORTH AMERICAN VERTICAL DATUM OF 1988

This map was produced to conform with the  
National Geospatial Program US Topo Product Standard, 2011.  
A metadata file associated with this product is draft version 0.6.2



QUADRANGLE LOCATION		
Hartford North	Manchester	Rockville
Hartford South	Glastonbury	Marlborough
Middletown	Middle Haddam	Moodus

ROAD CLASSIFICATION		
Interstate Route	State Route	Local Road
US Route	State Route	4WD
Ramp	Interstate Route	US Route
	State Route	State Route

GLASTONBURY, CT  
2012