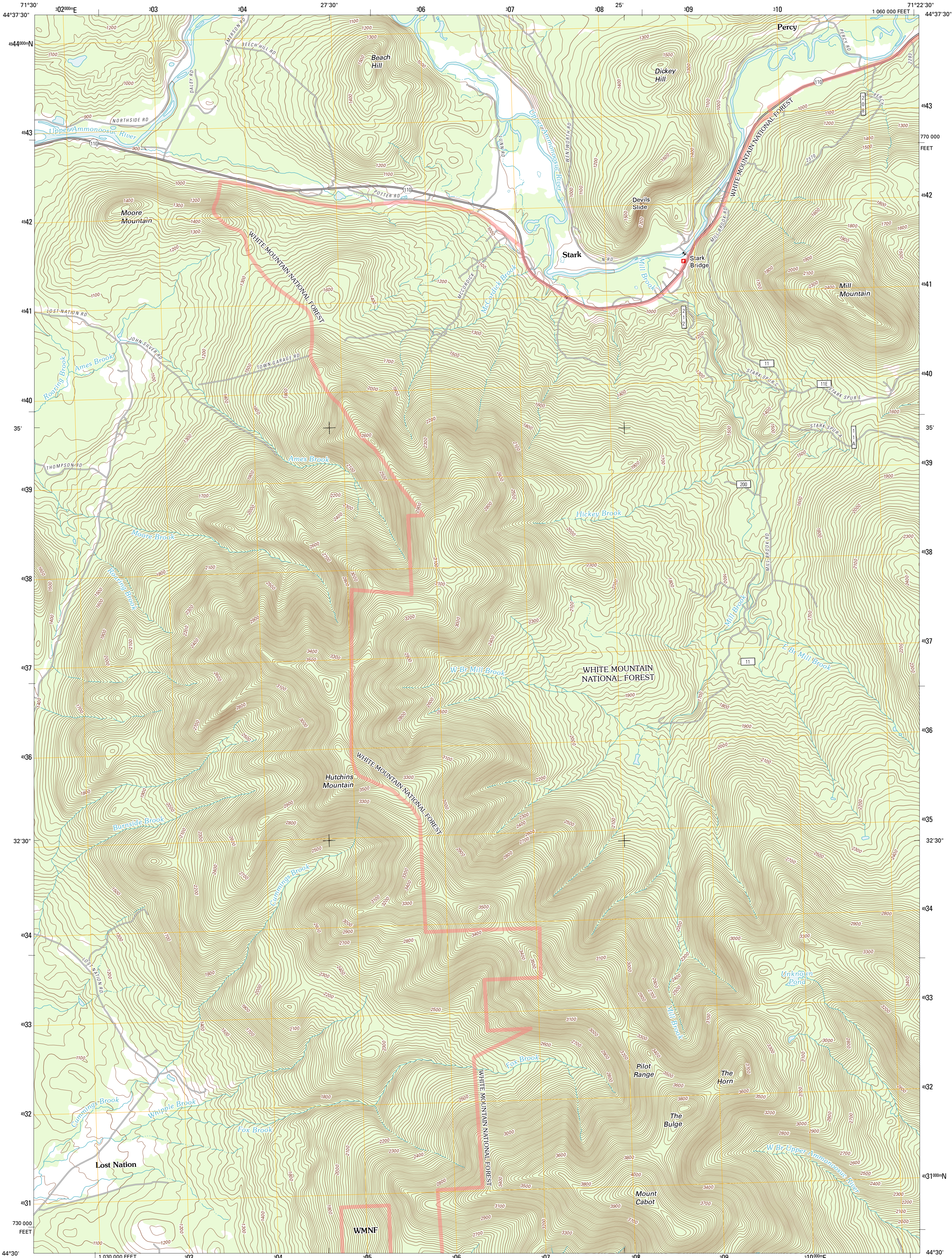




U.S. DEPARTMENT OF THE INTERIOR
U. S. GEOLOGICAL SURVEY

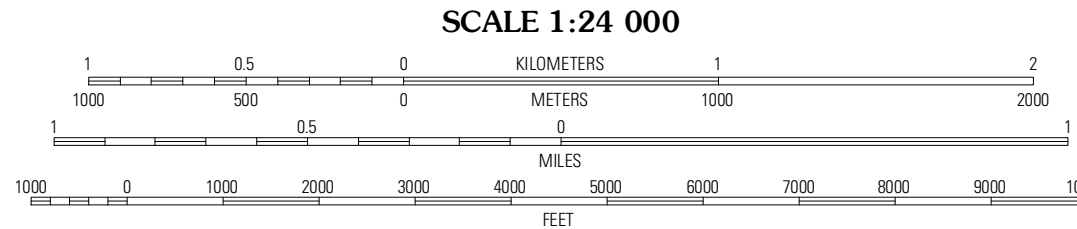
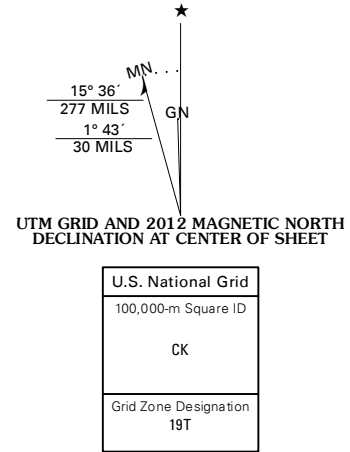


STARK QUADRANGLE
NEW HAMPSHIRE-COOS CO.
7.5-MINUTE SERIES



Produced by the United States Geological Survey
North American Datum of 1983 (NAD83)
World Geodetic System of 1984 (WGS84). Projection and
1 000-meter grid: Universal Transverse Mercator, Zone 19T
10 000-foot ticks: New Hampshire Coordinate System of
1983

Imagery.....NAIP, September 2011
Roads.....©2006-2011 TomTom
Roads within US Forest Service Lands.....USFS Data
with limited Forest Service updates, 2009
Names.....GNIS, 2011
Hydrography.....National Hydrography Dataset, 2011
Contours.....National Elevation Dataset, 2001
Boundaries.....Census, IBWC, IBC, USGS, 1972 - 2010



CONTOUR INTERVAL 20 FEET
NORTH AMERICAN VERTICAL DATUM OF 1988
This map was produced to conform with the
National Geospatial Program US Topo Product Standard, 2011.
A metadata file associated with this product is draft version 0.6.2



Stratford	Percy Peaks	Dummer Ponds
Groveton	Stark	West Milan
Lancaster	Jefferson	Mount Crescent

ADJOINING 7.5' QUADRANGLES

ROAD CLASSIFICATION
Interstate Route
US Route
Ramp
Interstate Route
US Route
FS Primary Route
FS Passenger Route
FS High Clearance Route
State Route
4WD
State Route
State Route

Check with local Forest Service unit
for current travel conditions and restrictions.

STARK, NH
2012