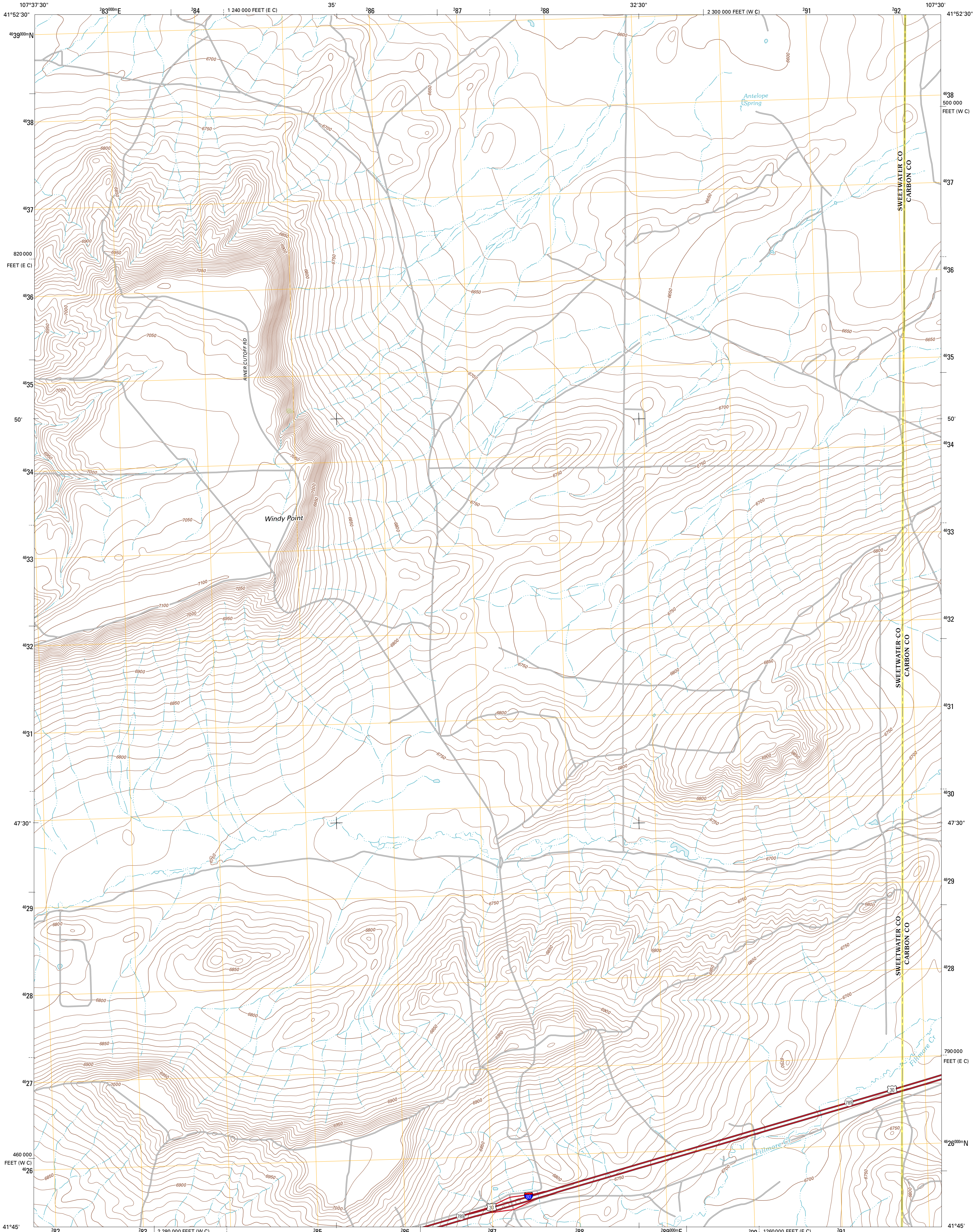




U.S. DEPARTMENT OF THE INTERIOR  
U. S. GEOLOGICAL SURVEY

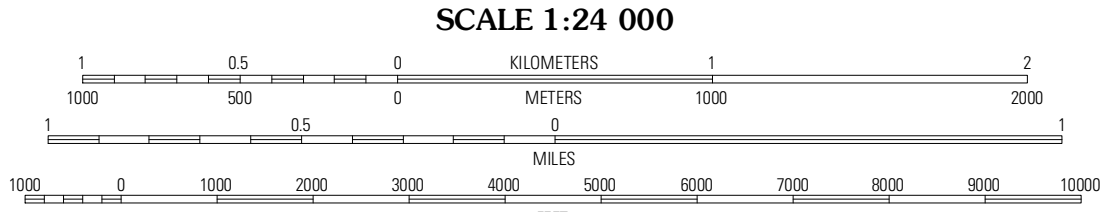
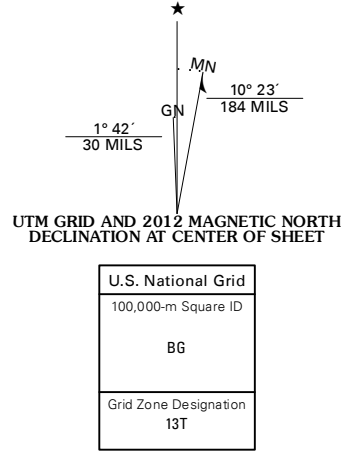


ANTELOPE SPRING QUADRANGLE  
WYOMING  
7.5-MINUTE SERIES



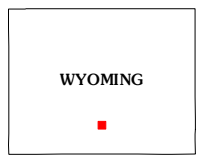
Produced by the United States Geological Survey  
North American Datum of 1983 (NAD83)  
World Geodetic System of 1984 (WGS84). Projection and  
1 000-meter grid: Universal Transverse Mercator, Zone 13T  
10 000-foot ticks: Wyoming Coordinate System of 1983  
(west central and east central zones)

Imagery:.....NAIP, August 2009  
Roads:.....©2006-2011 TomTom  
Names:.....GNS, 2011  
Hydrography:.....National Hydrography Dataset, 2009  
Contours:.....National Elevation Dataset, 2008  
Boundaries:.....Census, IBWC, IBC, USGS, 1972 - 2010  
Public Land Survey System:.....BLM, 2006 - 2008



CONTOUR INTERVAL 10 FEET  
NORTH AMERICAN VERTICAL DATUM OF 1988

This map was produced to conform with the  
National Geospatial Program US Topo Product Standard, 2011.  
A metadata file associated with this product is draft version 0.6.3



| QUADRANGLE LOCATION |                 |                 |
|---------------------|-----------------|-----------------|
| Laramie Knoll       | Back Draw       | Shamrock Hills  |
| Jacobson Ranch      | Antelope Spring | Rawlins Peak SW |
| Creston Junction    | Riner           | Separation Peak |

| ROAD CLASSIFICATION |             |  |
|---------------------|-------------|--|
| Interstate Route    | State Route |  |
| US Route            | Local Road  |  |
| Ramp                | 4WD         |  |
|                     |             |  |

ANTELOPE SPRING, WY  
2012