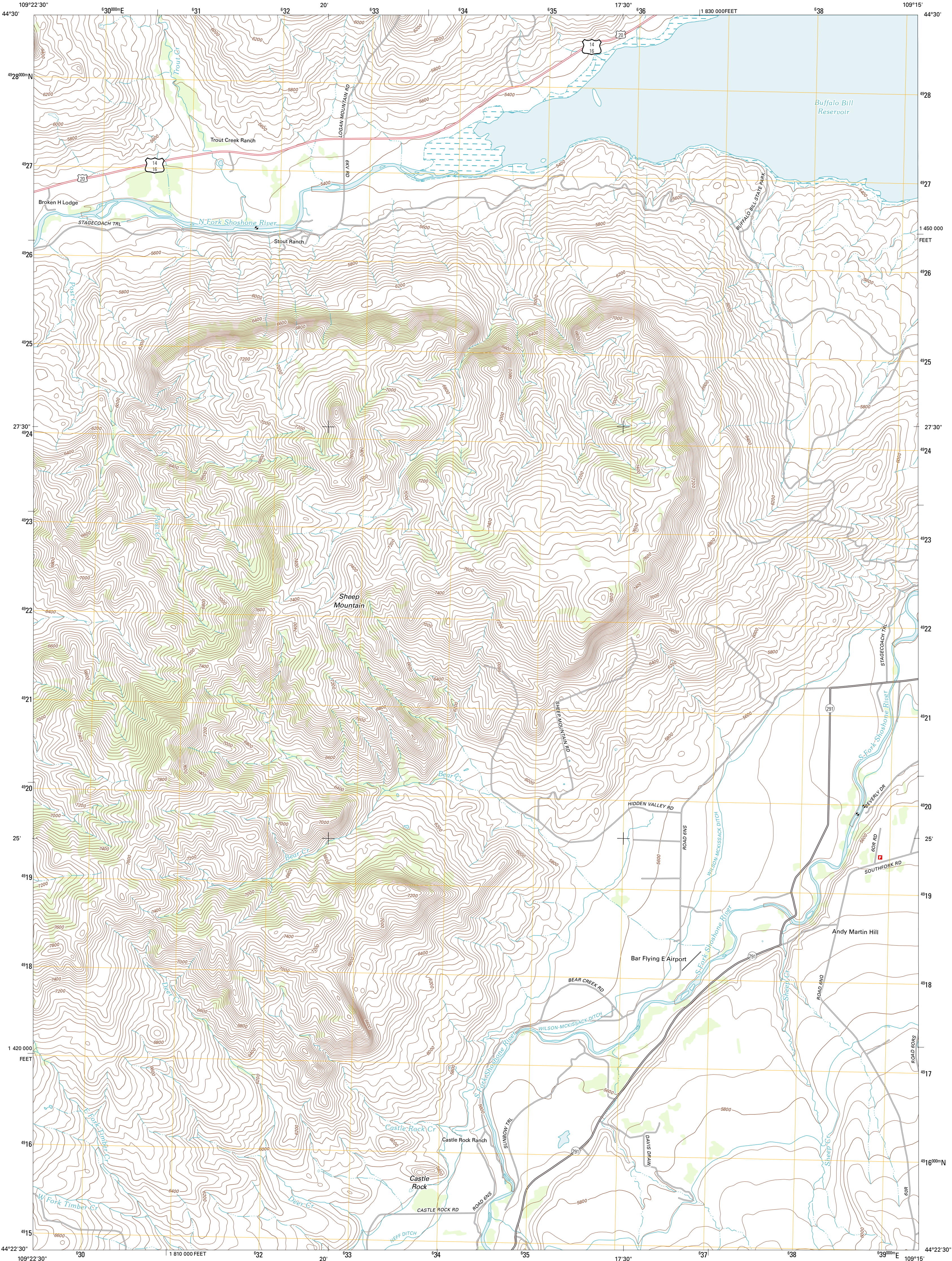




U.S. DEPARTMENT OF THE INTERIOR  
U. S. GEOLOGICAL SURVEY

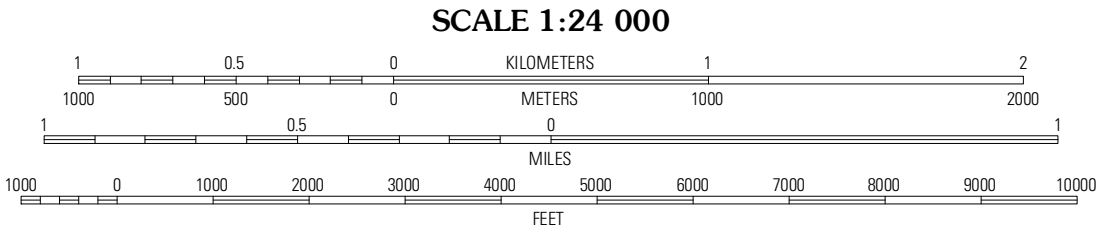
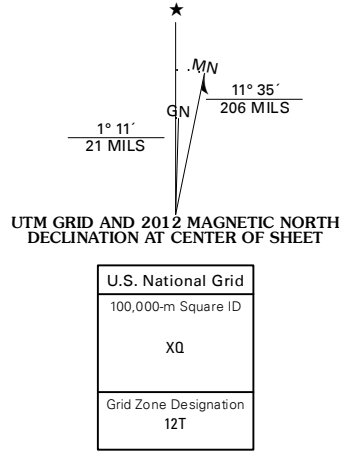


CASTLE ROCK CREEK QUADRANGLE  
WYOMING-PARK CO.  
7.5-MINUTE SERIES

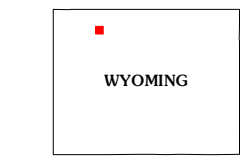


Produced by the United States Geological Survey  
North American Datum of 1983 (NAD83)  
World Geodetic System of 1984 (WGS84). Projection and  
1 000-meter grid: Universal Transverse Mercator, Zone 12T  
10 000-foot ticks: Wyoming Coordinate System of 1983  
(west central zone)

Imagery.....NAIP, August 2009  
Roads.....©2006-2011 TomTom  
Names.....GNS, 2011  
Hydrography.....National Hydrography Dataset, 2009  
Contours.....National Elevation Dataset, 2000  
Boundaries.....Census, IBWC, IBC, USGS, 1972 - 2010  
Public Land Survey System.....BLM, 2006 - 2008



CONTOUR INTERVAL 40 FEET  
NORTH AMERICAN VERTICAL DATUM OF 1988  
This map was produced to conform with the  
National Geospatial Program US Topo Product Standard, 2011.  
A metadata file associated with this product is draft version 0.6.3



Jim Mountain	Logan Mountain	Shoshone Canyon
Wapiti	Castle Rock Creek	Ima Flats
Twin Creek	Belknap Creek	Devils Tooth

ROAD CLASSIFICATION			
Interstate Route	State Route	Local Road	4WD
US Route	State Route	Local Road	4WD
Ramp	Interstate Route	US Route	State Route

CASTLE ROCK CREEK, WY  
2012