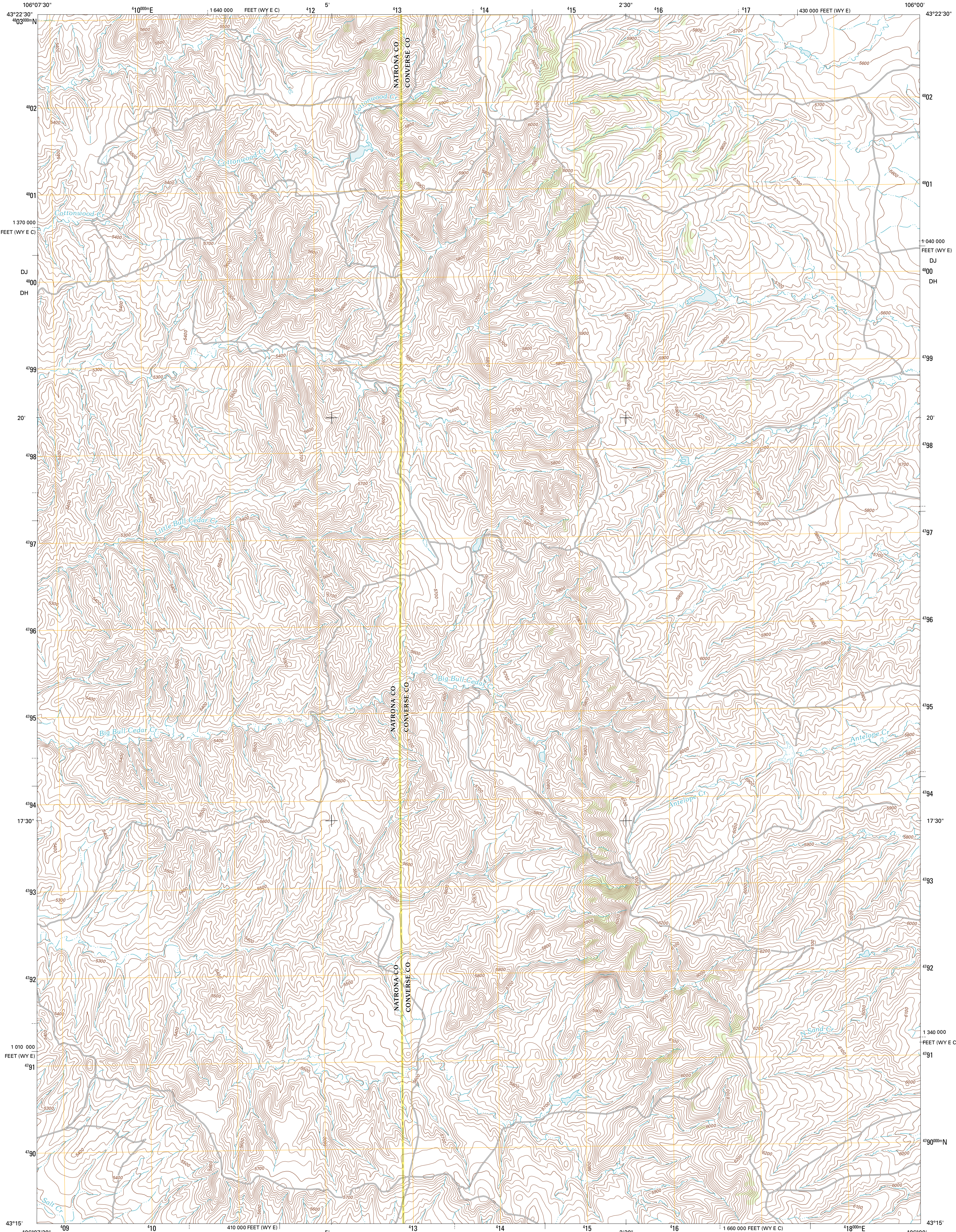




U.S. DEPARTMENT OF THE INTERIOR
U. S. GEOLOGICAL SURVEY

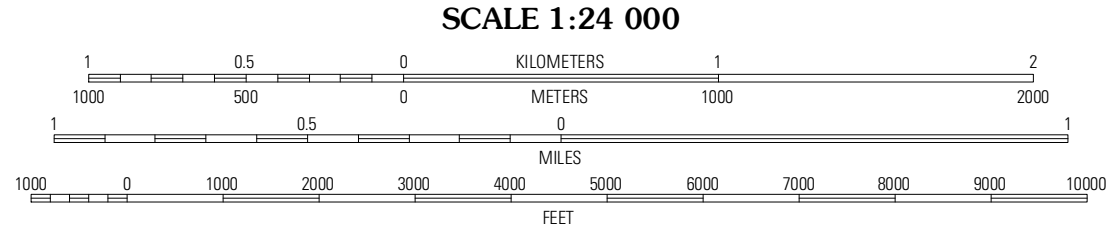
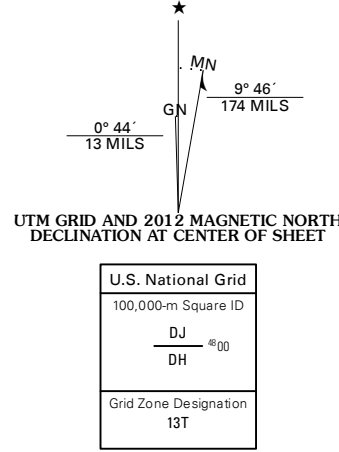


GILLAM DRAW EAST QUADRANGLE
WYOMING
7.5-MINUTE SERIES



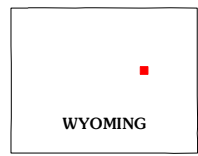
Produced by the United States Geological Survey
North American Datum of 1983 (NAD83)
World Geodetic System of 1984 (WGS84). Projection and
1 000-meter grid: Universal Transverse Mercator, Zone 13T
10 000-foot ticks: Wyoming Coordinate System of 1983 (east
and east central zones)

Imagery.....NAP, July 2009 - August 2009
Roads.....©2006-2011 TomTom
Names.....GNIS, 2011
Hydrography.....National Hydrography Dataset, 2009
Contours.....National Elevation Dataset, 2005
Boundaries.....Census, IBWC, IBC, USGS, 1972 - 2010
Public Land Survey System.....BLM, 2006 - 2008



CONTOUR INTERVAL 20 FEET
NORTH AMERICAN VERTICAL DATUM OF 1988

This map was produced to conform with the
National Geospatial Program US Topo Product Standard, 2011.
A metadata file associated with this product is draft version 0.6.3



Edgerton	Sawmill Canyon	Ross
Gillam Draw West	Gillam Draw East	Marsh Draw
Seven L. Creek West	Seven L. Creek East	Fly Draw

ADJOINING 7.5' QUADRANGLES

ROAD CLASSIFICATION

Interstate Route	State Route
US Route	Local Road
Ramp	4WD

Legend: Interstate Route (red line with blue shield), US Route (black line with white shield), State Route (grey line with black shield), Local Road (thin grey line), 4WD (dashed line), Ramp (red line with blue triangle), US Route (black line with white shield), State Route (grey line with black shield)

GILLAM DRAW EAST, WY
2012