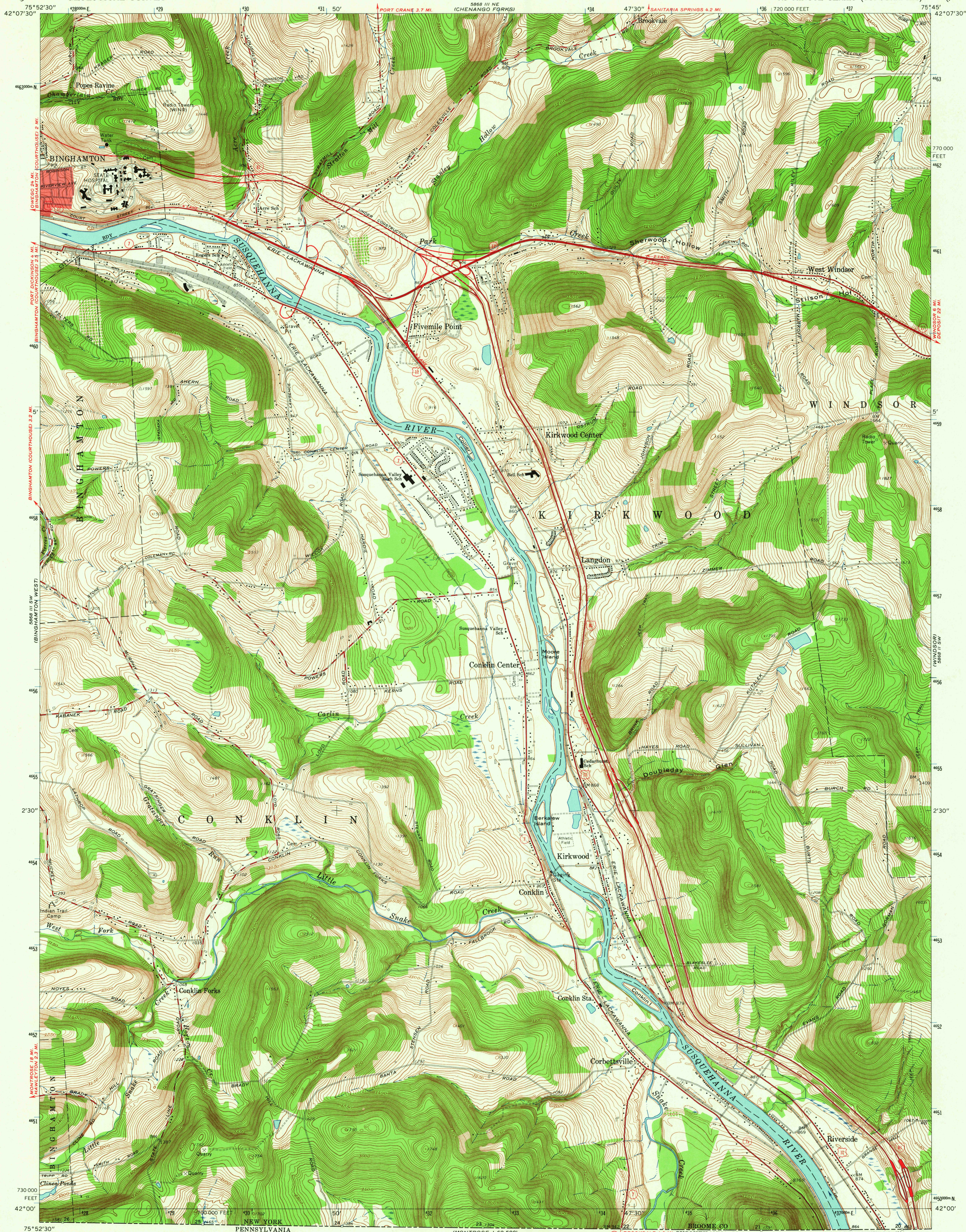
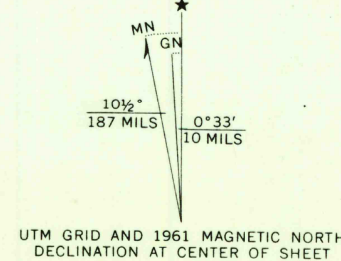


UNITED STATES  
DEPARTMENT OF THE INTERIOR  
GEOLOGICAL SURVEY

BINGHAMTON EAST QUADRANGLE  
NEW YORK  
7.5 MINUTE SERIES (TOPOGRAPHIC)



Mapped, edited, and published by the Geological Survey  
Control by USGS and USC&GS  
Topography by planetable surveys 1937. Revised 1961  
Polyconic projection. 1927 North American datum  
10,000-foot grid based on New York coordinate system, central zone  
1000-meter Universal Transverse Mercator grid ticks,  
zone 18, shown in blue  
Red tint indicates area in which only landmark buildings are shown



SCALE 1:24,000  
CONTOUR INTERVAL 10 FEET  
DATUM IS MEAN SEA LEVEL



ROAD CLASSIFICATION  
Heavy-duty ——— Light-duty ———  
Medium-duty ——— Unimproved dirt ———  
Interstate Route U.S. Route State Route

USGS  
Historical File  
Topographic Division

BINGHAMTON EAST, N. Y.  
N4200—W7545/7.5

1961

AMS 5868 III SE—SERIES V821

FOR SALE BY U. S. GEOLOGICAL SURVEY, WASHINGTON 25, D. C.  
A FOLDER DESCRIBING TOPOGRAPHIC MAPS AND SYMBOLS IS AVAILABLE ON REQUEST

3635