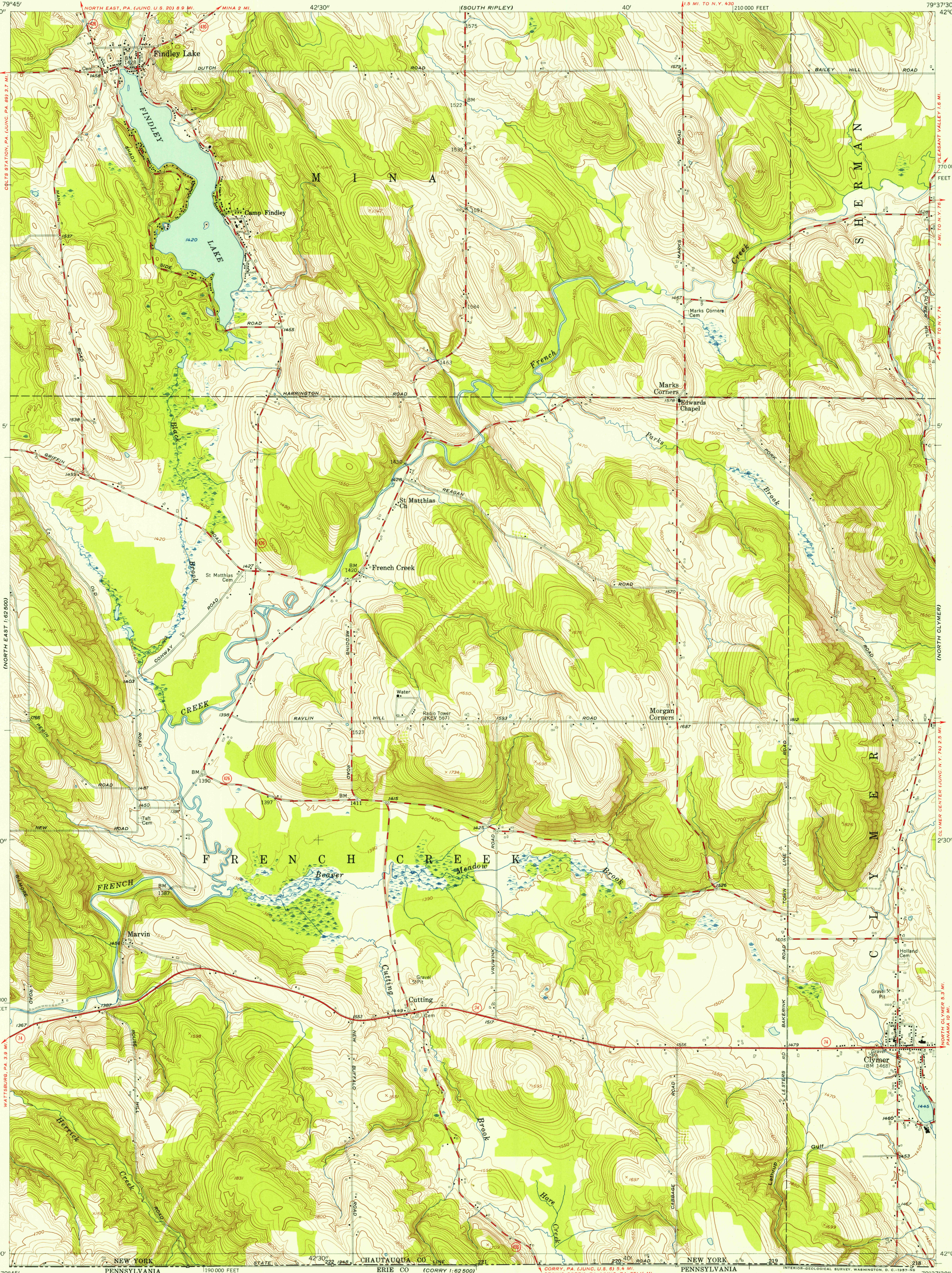


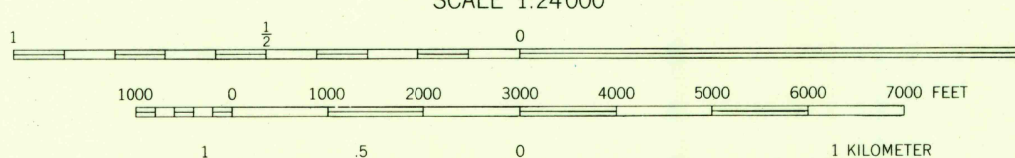
UNITED STATES  
DEPARTMENT OF THE INTERIOR  
GEOLOGICAL SURVEY

CLYMER QUADRANGLE  
NEW YORK-CHAUTAUQUA CO.  
7.5 MINUTE SERIES (TOPOGRAPHIC)  
SW/4 CLYMER 15' QUADRANGLE



Mapped, edited, and published by the Geological Survey  
Control by USGS, and USC&GS  
Topography from aerial photographs by photogrammetric  
methods. Aerial photographs taken 1953. Field check 1954  
Polyconic projection. 1927 North American datum  
10,000-foot grid based on New York coordinate system,  
west zone  
Unchecked elevations are shown in brown

TRUE NORTH  
MAGNETIC NORTH  
APPROXIMATE MEAN  
DECLINATION, 1954



CONTOUR INTERVAL 10 FEET  
DATUM IS MEAN SEA LEVEL



ROAD CLASSIFICATION  
Heavy-duty ——— Light-duty ———  
Medium-duty ——— Unimproved dirt ———  
U. S. Route ——— State Route ———

CLYMER, N. Y.  
SW/4 CLYMER 15' QUADRANGLE  
N 4200—W 7937.5/7.5

1954

FEB 15 1957

3095