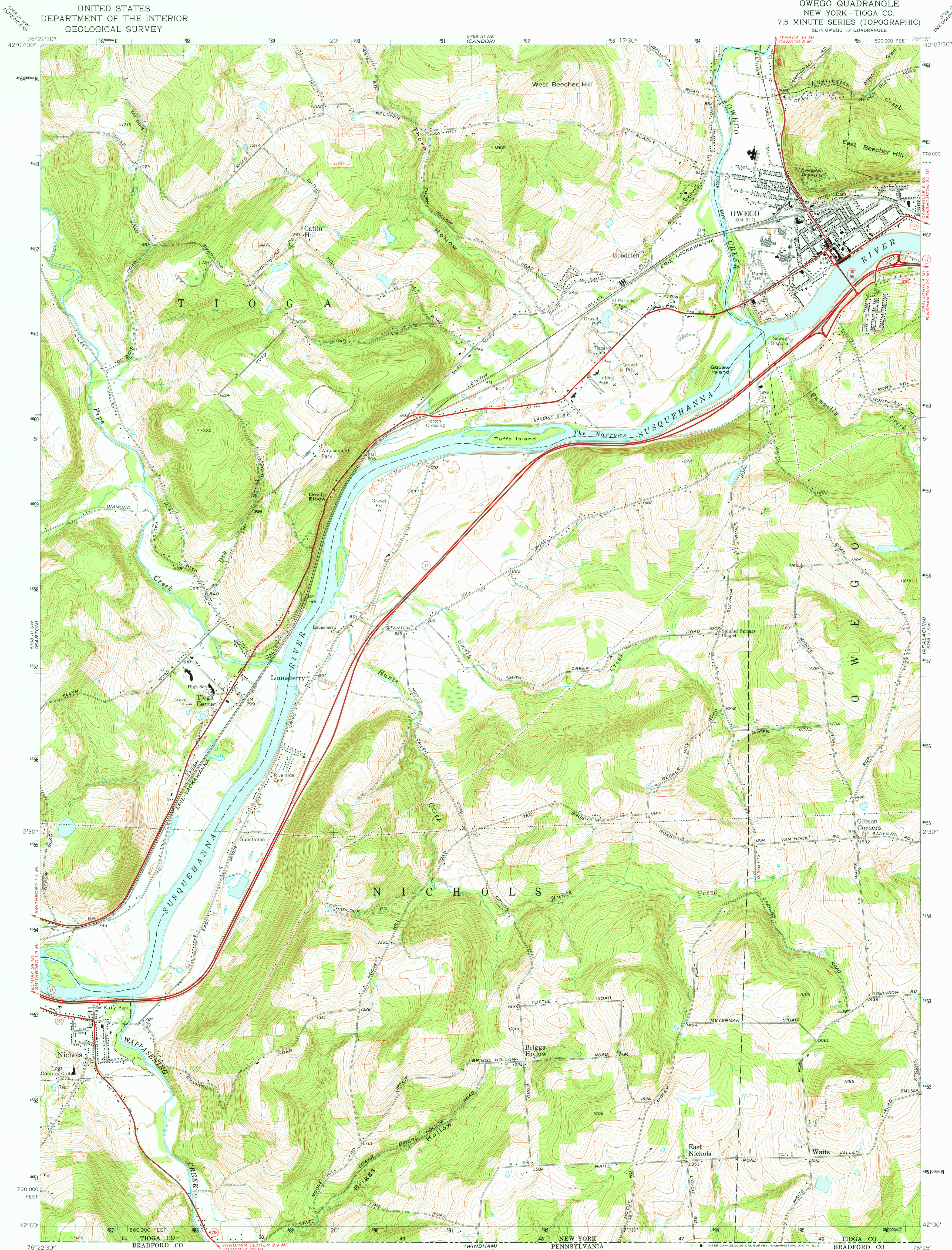
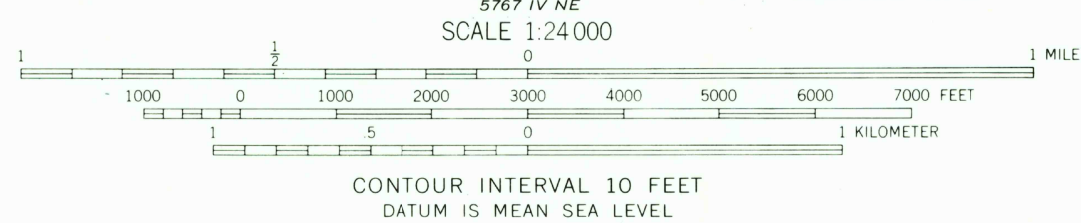


UNITED STATES
DEPARTMENT OF THE INTERIOR
GEOLOGICAL SURVEY

OWEGO QUADRANGLE
NEW YORK-TIOGA CO.
7.5 MINUTE SERIES (TOPOGRAPHIC)
SE/4 OWEGO 15' QUADRANGLE



Mapped, edited, and published by the Geological Survey
Revised in cooperation with New York Department of Transportation
Control by USGS and USC&GS
Topography by photogrammetric methods from aerial photographs
taken 1944 and 1948. Field checked 1956. Revised from aerial
photographs taken 1968. Field checked 1969
Polyconic projection. 1927 North American datum
10,000-foot grid based on New York coordinate system, central zone
1000-meter Universal Transverse Mercator grid ticks,
zone 18, shown in blue
Fine red dashed lines indicate selected fence and field lines where
generally visible on aerial photographs. This information is unchecked



ROAD CLASSIFICATION
Primary highway, all weather, hard surface
Light-duty road, all weather, improved surface
Unimproved road, fair or dry weather
State Route



USGS
Historical File
Topographic Division

JUL 21 1978

OWEGO, N. Y.
SE/4 OWEGO 15' QUADRANGLE
N4200-W7615/7.5

4800