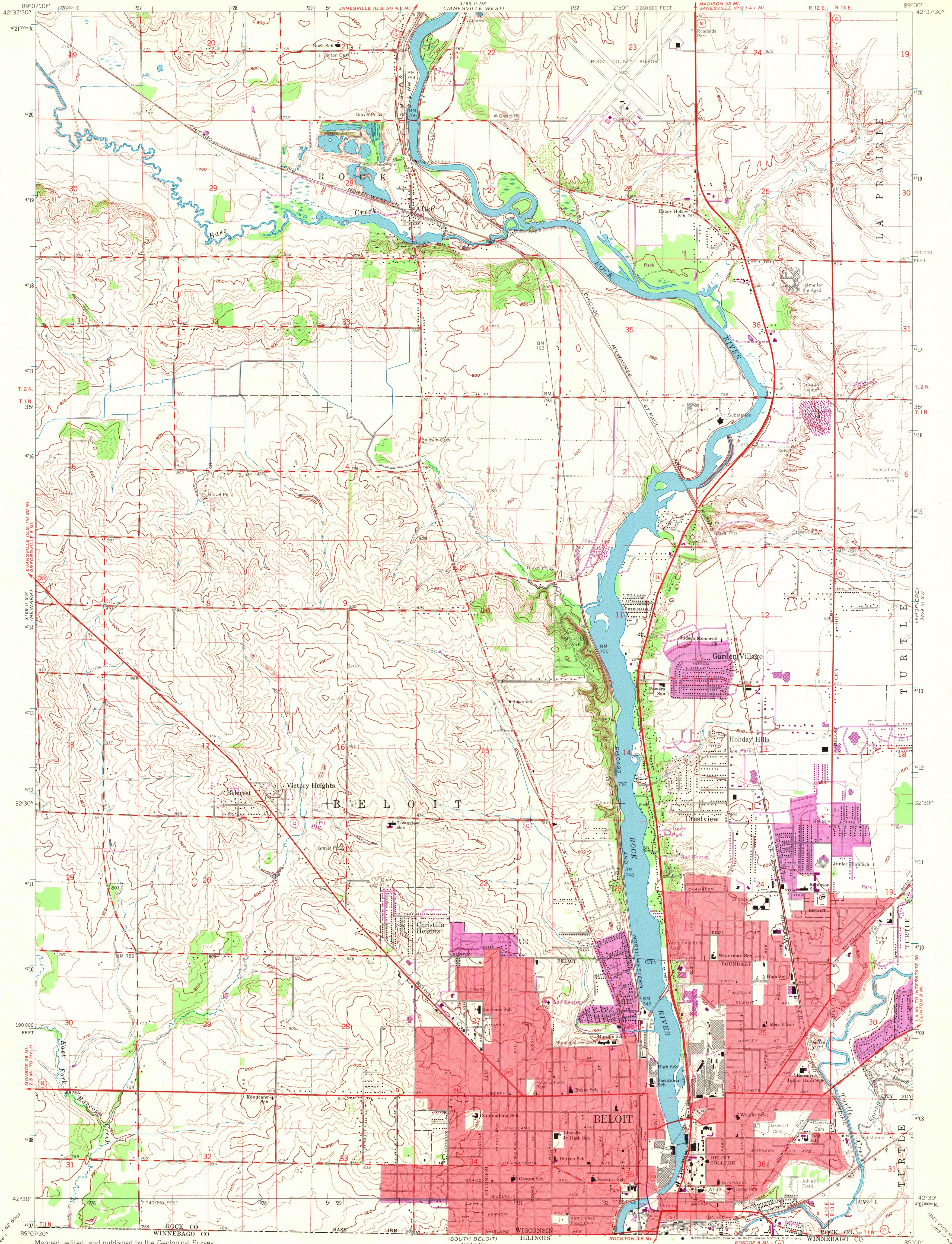
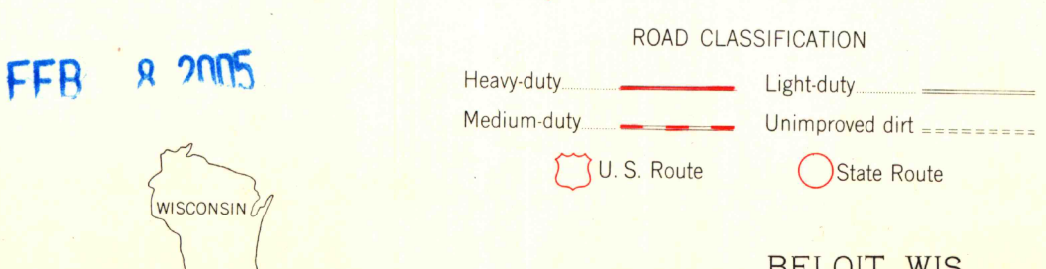
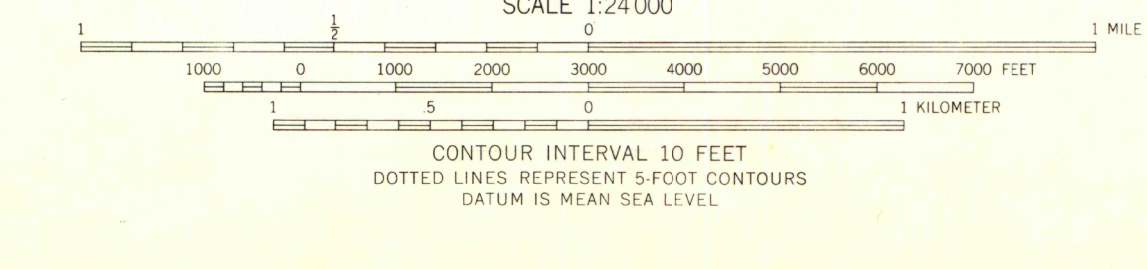
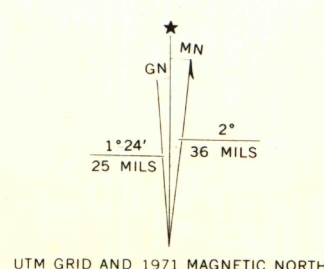


UNITED STATES
DEPARTMENT OF THE INTERIOR
GEOLOGICAL SURVEY

BELOIT QUADRANGLE
WISCONSIN-ROCK CO.
7.5 MINUTE SERIES (TOPOGRAPHIC)
SE 4 JANSVILLE 15' QUADRANGLE



Mapped, edited, and published by the Geological Survey in cooperation with State of Wisconsin agencies
Control by USGS and USC&GS
Topography by photogrammetric methods from aerial photographs taken 1960. Field checked 1962
Polyconic projection. 1927 North American datum 10,000-foot grid based on Wisconsin coordinate system, south zone 1000-meter Universal Transverse Mercator grid ticks, zone 16, shown in blue
Red tint indicates areas in which only landmark buildings are shown
Fine red dashed lines indicate selected fence and field lines where generally visible on aerial photographs. This information is unchecked
Revisions shown in purple compiled from aerial photographs taken 1971. This information not field checked
Purple tint indicates extension of urban areas



THIS MAP COMPLIES WITH NATIONAL MAP ACCURACY STANDARDS
FOR SALE BY U.S. GEOLOGICAL SURVEY, WASHINGTON, D. C. 20242
AND BY THE WISCONSIN GEOLOGICAL AND NATURAL HISTORY SURVEY, MADISON, WISCONSIN 53706
A FOLDER DESCRIBING TOPOGRAPHIC MAPS AND SYMBOLS IS AVAILABLE ON REQUEST

ARTHUR H. ROBINSON MAP LIBRARY
University of Wisconsin-Madison

BELOIT, WIS.
SE 4 JANSVILLE 15' QUADRANGLE
N 4230-W 8900/7.5
1962
PHOTOREVISED 1971
AMS 5169 II SE-SERIES V861

1971
copy
1-2