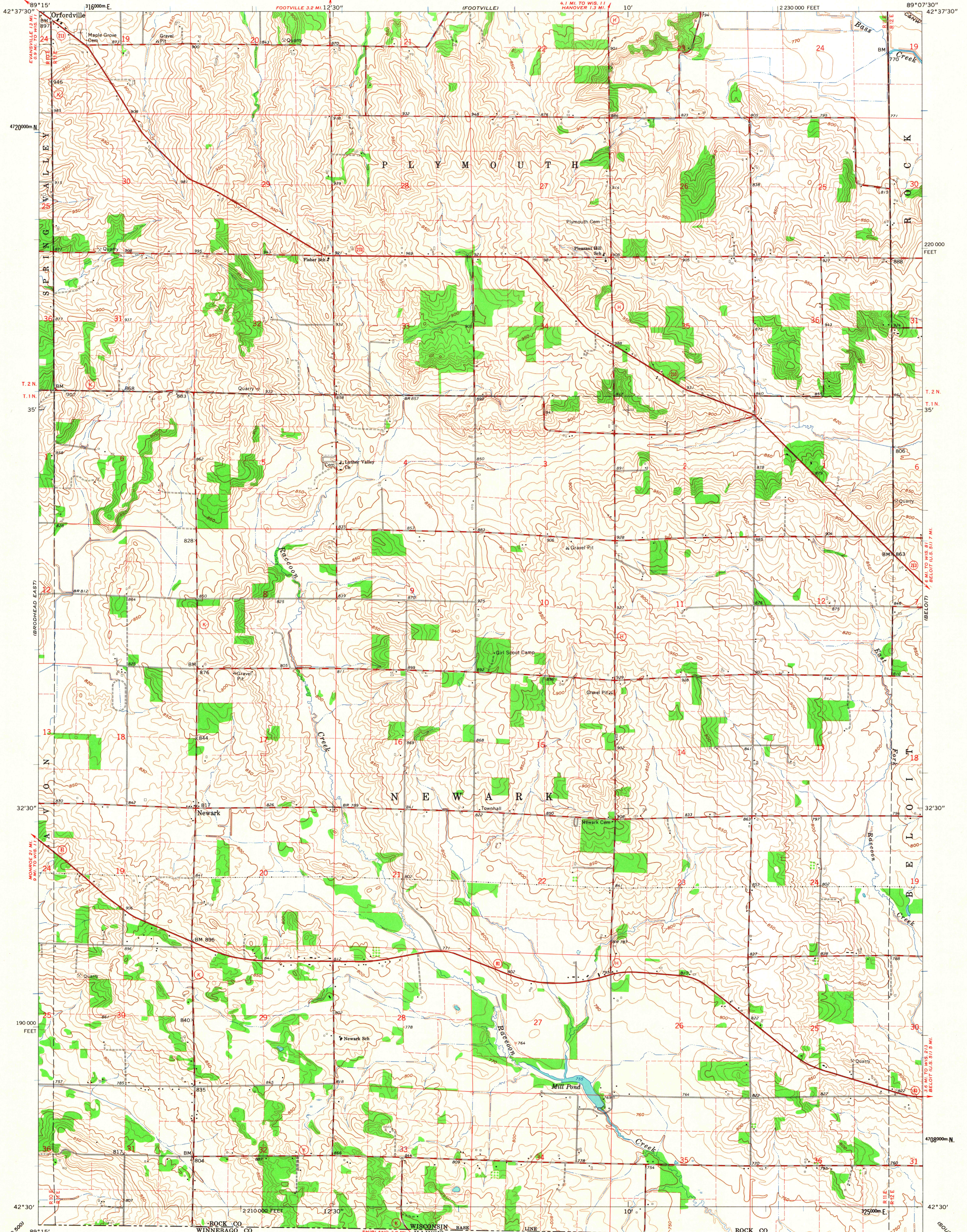


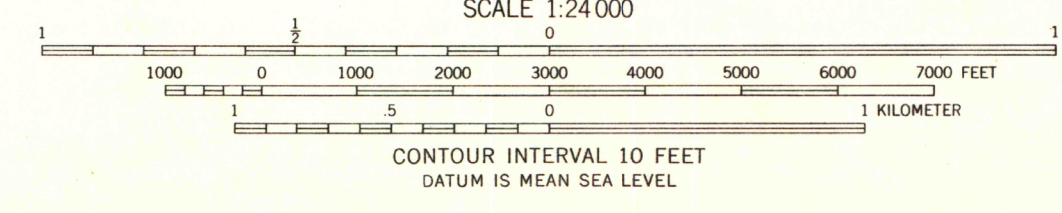
UNITED STATES
DEPARTMENT OF THE INTERIOR
GEOLOGICAL SURVEY

NEWARK QUADRANGLE
WISCONSIN
7.5 MINUTE SERIES (TOPOGRAPHIC)
SW/4 JAMESVILLE 15' QUADRANGLE



Mapped, edited, and published by the Geological Survey
in cooperation with State of Wisconsin agencies
Control by USGS and USC&GS
Topography by photogrammetric methods from aerial
photographs taken 1960. Field checked 1962
Polyconic projection. 1927 North American datum
10,000-foot grid based on Wisconsin coordinate system, south zone
1000-meter Universal Transverse Mercator grid ticks,
zone 16, shown in blue
Fine red dashed lines indicate selected fence and field lines where
generally visible on aerial photographs. This information is unchecked

TRUE NORTH
MAGNETIC NORTH
APPROXIMATE MEAN
DECLINATION, 1962



THIS MAP COMPLIES WITH NATIONAL MAP ACCURACY STANDARDS
FOR SALE BY U.S. GEOLOGICAL SURVEY, WASHINGTON 25, D.C.
AND BY THE WISCONSIN GEOLOGICAL AND NATURAL HISTORY SURVEY, MADISON 6, WISCONSIN
A FOLDER DESCRIBING TOPOGRAPHIC MAPS AND SYMBOLS IS AVAILABLE ON REQUEST

MAR 05 2005

QUADRANGLE LOCATION
ARTHUR H. ROBINSON MAP LIBRARY
University of Wisconsin-Madison

ROAD CLASSIFICATION
Heavy-duty ——— Light-duty ———
Medium-duty ——— Unimproved dirt ———
○ State Route

NEWARK, WIS.
SW/4 JAMESVILLE 15' QUADRANGLE
N4230-W8907.5/7.5

1962

1962
COPY
1-3