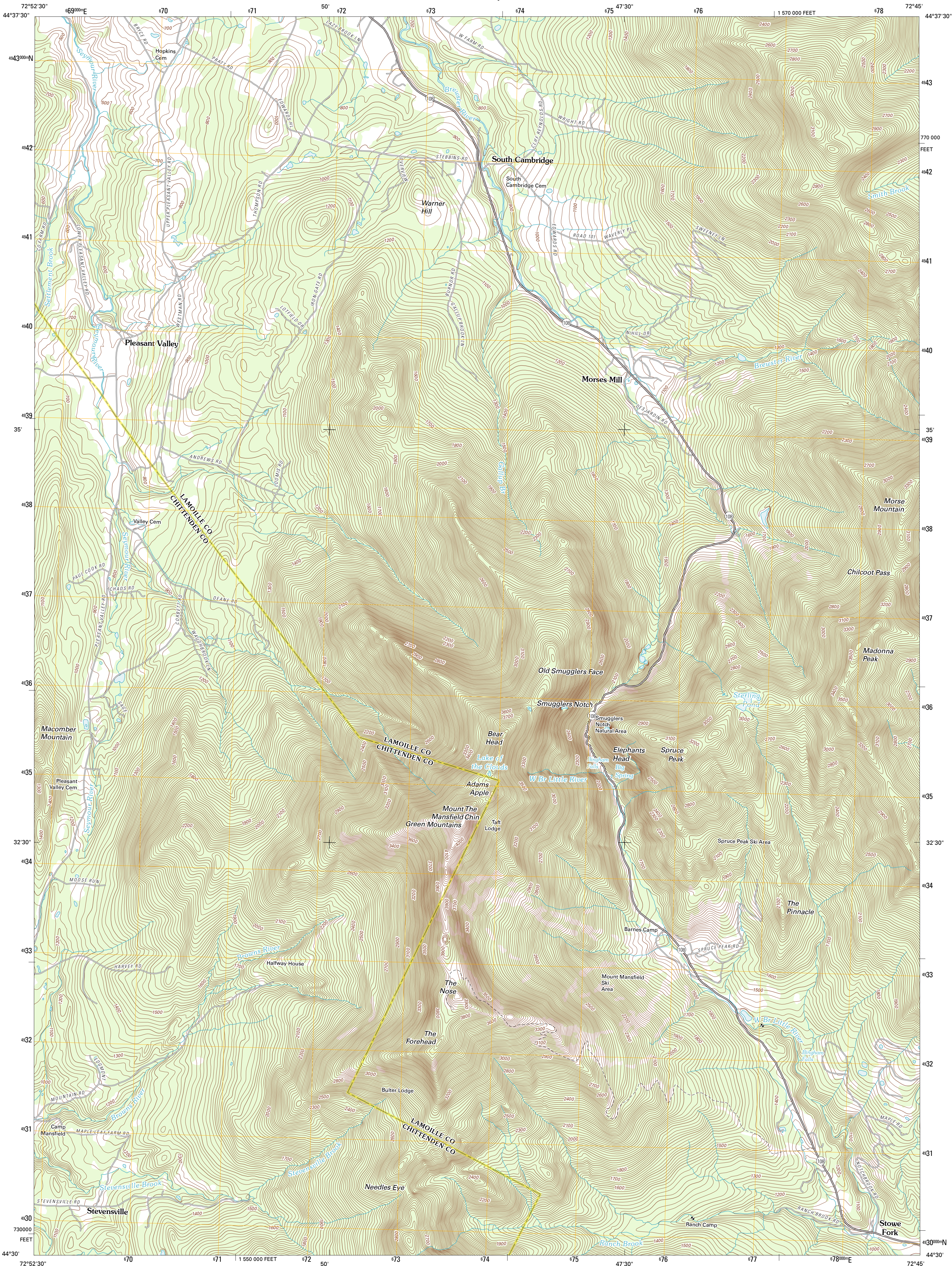




U.S. DEPARTMENT OF THE INTERIOR
U. S. GEOLOGICAL SURVEY

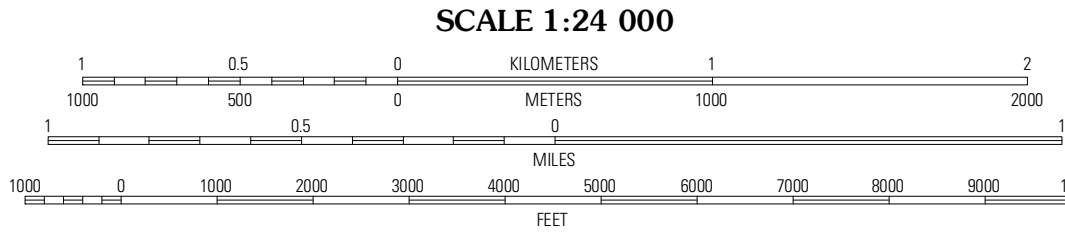
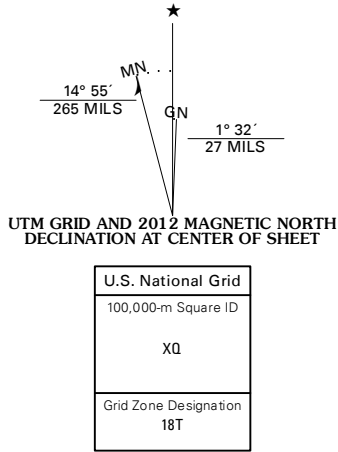


MOUNT MANSFIELD QUADRANGLE
VERMONT
7.5-MINUTE SERIES



Produced by the United States Geological Survey
North American Datum of 1983 (NAD83)
World Geodetic System of 1984 (WGS84). Projection and
1 000-meter grid: Universal Transverse Mercator, Zone 18T
10 000-foot ticks: Vermont Coordinate System of 1983

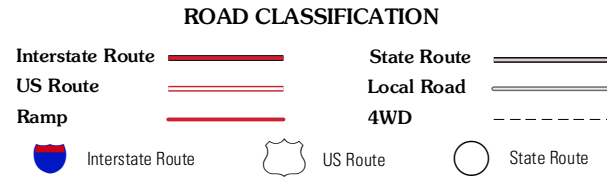
Imagery.....NAIP, September 2011
Roads.....©2006-2011 TomTom
Names.....GNS, 2011
Hydrography.....National Hydrography Dataset, 2011
Contours.....National Elevation Dataset, 2007
Boundaries.....Census, IBC, USGS, 1972 - 2010



CONTOUR INTERVAL 20 FEET
NORTH AMERICAN VERTICAL DATUM OF 1988
This map was produced to conform with the
National Geospatial Program US Topo Product Standard, 2011.
A metadata file associated with this product is draft version 0.6.2



Gilboa Mountain	Jeffersonville	Johnson
Underhill	Mount Mansfield	Sterling Mountain
Richmond	Bolton Mountain	Stowe



MOUNT MANSFIELD, VT
2012